

THIS DEED is made the 20 day of November 1980

BETWEEN CRAIGHEAD DIOCESAN SCHOOL TRUST BOARD being the Proprietor of Craighead Diocesan School, Timaru the said Proprietor, a Body duly incorporated under The Religious Charitable and Educational Trust Act 1908 pursuant to a Statute of the Synod of the Diocese of Christchurch and having its registered office at George Street, Timaru (hereinafter together with its successors and assigns called "the Proprietor") of the first part AND HER MAJESTY THE QUEEN acting by and through the Minister of Education (hereinafter called "the Minister") of the second part.

WHEREAS the Minister and the Proprietor of Craighead Diocesan School have pursuant to Section 7(2) of the Private Schools Conditional Integration Act 1975 agreed to enter into this Deed of Agreement whereby the said Craighead Diocesan School is to be established as an integrated school (hereinafter referred to as "the school")

AND WHEREAS the school was founded and established in 1911 and has operated as a boarding and day school for girls to cater particularly for the needs of families in the Canterbury province and other families which were desirous of a strongly based Diocesan Anglican School education.

NOW THIS DEED WITNESSETH THAT IT IS HEREBY COVENANTED AGREED AND DECLARED BY AND BETWEEN THE PARTIES HERETO AS FOLLOWS:

1. THAT the Minister and the Proprietor hereby agree that the said school apart from the boarding establishment is to become an integrated secondary (F3-F7) school.
2. ON behalf of the Proprietor it is hereby agreed that:
 - a) The Proprietor owns or holds upon trust the land



and the buildings described in the first schedule (hereinafter referred to as "the school premises")

- b) The Proprietor shall set apart and appropriate as owner or upon trust that part of the school premises as shown edged in red but excluding the areas edged or shaded blue on the plan attached hereto forming part of the first schedule (hereinafter called "the integrated school premises") and all chattels and other assets associated with the integrated school premises exclusively for the purposes of the school as an integrated school so that the controlling authority of the school shall have exclusive right to the possession and use of the integrated school premises and all chattels and other assets associated with the integrated school.

PROVIDED THAT:

- i) The integrated school premises and all chattels and other assets associated with the integrated school premises shall be available for use by the Proprietor and/or the boarders (boarders are those pupils who attend the Proprietor's boarding establishment which is not part of the integrated school) and/or the staff employed by the Proprietor in non-school time.
- ii) With the consent or at the request of the Proprietor the Board of Governors may grant the use of the Hall and/or other facilities to other organisations for non-school purposes. The Proprietor shall not unreasonably or arbitrarily withhold its consent where the use is one which is not in conflict with the maintenance of the special character of the school. The Board of Governors may make payment of a reasonable fee by any such organisation a condition of use of such facilities.

- iii) Certain chattels currently used in conjunction with the school not purchased with money appropriated by Parliament represent donations or presentations to the school and/or have some special intrinsic and/or historic value and it is acknowledged that such chattels shall remain the exclusive property of the Proprietor who shall be responsible for the maintenance and insurance notwithstanding that the Proprietor may continue to allow the school the use of them. Such chattels are listed in the second schedule attached hereto.
- iv) The parties hereto agree that the proceeds of all endowments and appeal funds gifts and other contributions made to the school in the past from any source whatsoever except attendance dues and whether for the purposes of the school or the boarding establishment shall be set aside and remain the exclusive property of the Proprietor and be used for such purposes as it in its sole discretion shall decide. Such funds are identified by inclusion in the third schedule hereto.
- c) The Proprietor shall accept and meet the liability for all mortgages liens and other charges upon the said land and buildings. Particulars of the existing mortgages are listed in the fourth schedule attached hereto.
- d) i.) The Proprietor shall plan pay for and execute the improvements set out in the fifth schedule to the buildings and associated facilities to the minimum standard for comparable State schools prevailing at the effective date of the agreement such improvements to be carried

[Handwritten signatures and initials at the bottom of the page]

out by the various dates specified in the schedule of works.

- ii) The Proprietor shall upon completion of any improvements to the electrical services set out in the fifth schedule hereto arrange for the local electrical supply authority to inspect the premises of the integrated school in terms of Regulation 45 of the Electrical Supply Regulations 1976.
- e) The Proprietor shall plan execute and pay for such capital works and associated facilities as may be approved or required from time to time by the Minister pursuant to Section 40 (2) (d) of the Private Schools Conditional Integration Act 1975.
- f) The Proprietor may own or hold upon trust and control and maintain any land buildings and associated facilities that although not part of the integrated school in terms of this agreement are regarded by the Proprietor as appropriate to maintain the special character of the school.
- g) The Proprietor shall insure the buildings owned or held upon trust by the Proprietor for the purpose of the school against risks normally insured against in some responsible insurance office in New Zealand and further acknowledges the obligation on it created by Section 40 (2) of the Private Schools Conditional Integration Act 1975.
- h) No person employed at the school and paid for his services at the school in whole or in part out of money appropriated by Parliament shall be paid by the Proprietor or its servants or agents any remuneration additional to that provided for by the Private Schools Conditional Integration Act 1975 or shall be granted or permitted any condition of service more favourable than that permitted in the case of a person employed in a comparable position in a State school PROVIDED HOWEVER that a


[Handwritten signatures and marks at the bottom of the page]

teacher to whom the provisions of Section 71 of the Private Schools Conditional Integration Act 1975 apply shall continue to be paid no less than the same salary and be accorded the same status as he received or was accorded on the day before the effective date of integration.

3. IT is recognised by the parties hereto that as the Proprietor's boarding establishment is not being integrated the Proprietor shall be entitled to pay to persons employed at the school who accept secondary employment with the Proprietor fair and reasonable remuneration for services in respect of the boarding establishment and in the case of the Principal the Proprietor shall also be entitled to pay fair and reasonable remuneration for the general supervision of the said boarding establishment.
4. THE Minister shall subject to Clause 2 (d) and (e) of this Deed of Agreement after the effective date hereof maintain the integrated School premises and the associated facilities in a state of repair order and condition as for a comparable State school and subject to Clause 2 (b) (iii) hereof provide for the maintenance of the chattels as though the school were a State school. The school shall be entitled to such furniture and equipment as the Minister supplies from time to time to comparable State schools.
5. THE Proprietor with the consent of the Minister which consent shall not be unreasonably withheld shall have the right to raise funds against the security of the school premises for the purpose of carrying out additions and/or improvements to the school premises or to the boarding establishment and facilities associated therewith and for such purposes may charge mortgage or encumber the school premises.

5 *[Signature]* *[Signature]* *[Signature]*

6. i) The parties hereto accept and agree that the School was originally established to provide education with a special character and that at the date hereof it provides education with the special character described in this clause. The school has a direct affiliation with the Diocese of Christchurch of the Church of the Province of New Zealand (commonly called the Anglican Church) and with the strength and support of this Church affiliation provides education based on the beliefs and philosophies of the Christian faith. It is the policy of the school to present an education balanced between tuition religious recreational and cultural activities aimed at developing character and maturity in the pupils. Integral to this policy has been instruction in the Christian faith and the use of the chapel as a place of regular prayer and worship for the whole school. The special character of the school derives from its close association with the Anglican Church and a determination to provide an education for pupils which is based on the philosophy that only in the context of Christian faith and practice can knowledge be completely understood and personality fully developed. The pursuit of excellence is stressed in all fields of endeavour within the school. The school lays great emphasis on the development of each individual child within a family atmosphere.
- ii) The school is conducted so that the tuition religious recreational and cultural activities provided by the school for the pupils are so organised that day pupils can as far as possible share the advantages offered to boarding pupils and it has been the policy of the school to accept day pupils on the clear understanding



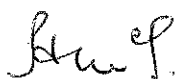
that such pupils will as far as possible follow the routine and share in the activities of boarding pupils.

iii) Attached hereto in the sixth schedule is an historical resume of the development of the special character of the school prepared by the Proprietor.

7. THE Proprietor of the school subject to the provisions of this Deed of Agreement:-

- a) Shall continue to have the responsibility to supervise the maintenance and preservation of the education with a special character provided by the school;
- b) Shall continue to have the right to determine from time to time what is necessary to preserve and safeguard the special character of the education provided by the school and described in this Deed of Agreement;
- c) May invoke the powers conferred upon it by the Private Schools Conditional Integration Act 1975, if in the opinion of the Proprietor the special character of the school as defined and described in this Deed of Agreement has been or is likely to be jeopardised or the education with a special character provided by the school as defined and described in this Deed of Agreement is no longer preserved and safeguarded.

8. a) The controlling authority of the school shall be a Board of Governors constituted pursuant to the provisions of Section 51 of the Education Act 1964. Such Board shall consist of eleven members comprising:
 - i) One member appointed by the Education Board of the district in which the school is situated.



- ii) One member elected by the teachers of the school controlled by the Board of Governors; PROVIDED HOWEVER that no member so elected may be appointed as Chairman or Deputy Chairman of the Board.
 - iii) Five members elected by the parents of pupils attending the school.
 - iv) Four members who shall be representatives of the Proprietor and appointed by it.
- b) Any election conducted pursuant to Section 8(5) of the Private Schools Conditional Integration Act 1975 shall be conducted as nearly as possible in the manner prescribed by the Secondary Schools Board Administration and Employment Regulations 1965 and any regulations made in amendment thereof or in substitution thereof and the provisions of those regulations shall with any necessary modifications be applied accordingly.

9. IT is agreed by the parties hereto that the maximum school roll shall be 130 pupils which shall include a maximum of 55 day pupils (day pupils are those pupils who do not reside in the Proprietor's boarding establishment) unless and until otherwise agreed by the Proprietor and the Minister. It is acknowledged that the school had a roll of 122 pupils as at the 1st day of March 1980.

10. PREFERENCE of enrolment at the school under Section 29 (1) of the Private Schools Conditional Integration Act 1975 shall only be given to those pupils whose parents have a particular sympathy with the special character of the school or whose parents have a particular connection with the school. Pupils whose parents at the date hereof have applied to the Proprietor to enrol their children at the school shall be enrolled as pupils by the Board of Governors when places are available. Pupils who attend the Proprietor's boarding establishment shall be enrolled

S *A.* *Am G.* *P..*

at the integrated school provided that pupils who would not have preference for enrolment by virtue of these presents shall not have preference of enrolment by reason only of enrolment at the Proprietor's boarding establishment.

11. UNLESS the Proprietor and the Regional Superintendent of Education otherwise agree and subject to places being available, the number of pupils whose parents do not have preference of enrolment under the provisions of Section 29 of the Private Schools Conditional Integration Act 1975 shall be limited to seven.

12. IT is agreed by and between the parties hereto that as daily religious observances in the Chapel and Christian teaching form part of the education with a special character provided by the school, the religious observances and Christian Education classes as determined from time to time by the Bishop of the Diocese of Christchurch shall continue in accordance with Section 32 of the Private Schools Conditional Integration Act, 1975, to form part of the school programme which is presently carried out as follows:

- a) Assembly is held each morning in the school Chapel and is a religious service.
- b) The Holy Eucharist is celebrated regularly in the Chapel and such an act of worship constitutes a Religious Assembly on one day of each week.
- c) A service of worship is held on two Sunday evenings in each school term in the school Chapel and an evening service of lessons and carols is held in the Chapel during the final week of the school year

Subject to the conditions of Section 32 of the Private Schools Conditional Integration Act 1975, attendance is compulsory for all pupils for the services set out in clauses a, b and c above and for a maximum of two periods designated "Religious Education" each week.

[Handwritten signatures and initials at the bottom of the page]

13. THE Proprietor together with its servants, agents and licensees shall subject to the proviso to Section 40 (2) (i) of the Private Schools Conditional Integration Act 1975 have at all reasonable times access to the integrated school premises to ensure that the special character of the school is being maintained.
14. THE Proprietor together with its servants, agents and licensees shall have at all reasonable times access to the school premises sufficient to enable it to exercise the powers and carry out the responsibilities vested in it and imposed on it by the Private Schools Conditional Integration Act 1975 and by this agreement.
15. AN advertisement for the position of principal of the school shall state that a willingness and ability to take part in religious instruction appropriate to the said school shall be a condition of appointment and may state that a willingness and ability to assume responsibility to the Proprietors for the daily conduct and administration of the boarding establishment and for the development and conduct of the pupils accommodated in the boarding establishment shall be conditions of appointment.
16. AN advertisement for any teaching position at the school may state that the appointee will be expected to undertake under the employment of the Proprietor duties related to the control administration and supervision of the Proprietor's boarding establishment.
17. THERE shall be a position at the school to be designated Director of Religious Studies in accordance with Section 65 (1) (b) of the Private Schools Conditional

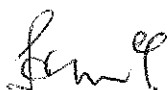


Integration Act 1975, which position shall be part of the normal staffing entitlement of the school as established by Regulations made under the Education Act 1964 and an advertisement for that position shall state that a willingness and ability to take part in Religious instruction appropriate to the special character of the school shall be a condition of appointment. Any person so appointed to the position of Director of Religious Studies shall accept these requirements as a condition of appointment. The Director of Religious Studies shall give guidance and provide effective leadership in Religious instruction and observances throughout the school.

18. A person appointed as aforesaid to the position of Director of Religious Studies at the school shall undertake such teaching duties, if any, as may be required by the Principal of the school.
19. WHEREAS religious instruction forms part of the education with a special character provided by the school the Proprietor may employ any person whether as a chaplain or otherwise for duties relating to the instructions and the provisions of Section 69 sub sections (2) and (3) of the Private Schools Conditional Integration Act 1975 shall apply to this clause.
20. THE Board of Governors of the integrated school shall designate up to two teaching positions at the school which in accordance with Section 65(1) (c) of the Private Schools Conditional Integration Act 1975 shall be positions of importance carrying a responsibility for Religious instruction and an advertisement for those positions shall state that

5







a willingness and ability to take part in Religious instruction appropriate to the special character of the school shall be a condition of appointment.

Any person so appointed to these positions shall accept these requirements as a condition of appointment.

21. THE Proprietor of the school may enter into agreements with the parents or other persons accepting responsibility for the education of pupils at the school providing that as a condition of the enrolment and attendance of each pupil at the school the parents or other persons shall pay attendance dues pursuant to the provisions of Section 36 of the Private Schools Conditional Integration Act 1975.
22. THE following variation from standard patterns of organisation is approved in respect of the school: A mid-term break is taken without prejudicing the number of teaching half-days required in terms of the Education Act 1964 and without contravening the provisions of any regulations made thereunder. The school being a boarding school, is open on Waitangi Day, Anzac Day, Queens Birthday and Anniversary Day when they fall within the school term.
23. IN the interest of maintaining the special character of the school the Proprietor shall provide boarding accommodation for a number of pupils which may be not more than a total of 80 within the total maximum roll of 130 unless and until otherwise agreed by the Proprietor and the Minister. If the Proprietor and the Principal agree the Principal may be appointed to control and administer the boarding establishment. The Proprietor shall have the right at its sole discretion to refuse residential enrolment to any person and shall also have the right to require the parents or other persons accepting responsibility for any pupil to remove that pupil from the boarding establishment.
- Handwritten signatures:*
A large signature "H. M. P." is written to the left of the text.
A smaller signature is written below it.
A small mark resembling a stylized "S" is written to the far left.
A small mark resembling a stylized "D" is written at the bottom right.

24. WHERE any of the costs associated with the conduct of the boarding establishment or with any other part of the Proprietor's land that is not part of the integrated school premises for the purposes of this agreement cannot be separated from the costs associated with the operation of the integrated school premises the Proprietor and the Board of Governors shall contribute to such costs according to their respective use of the facilities in respect of which the costs have been incurred.
25. IT is acknowledged by and between the parties hereto pursuant to Clause 24 hereof that certain of the services and facilities on or serving the school premises (excluding the integrated school premises) are used in common for the purpose of the integrated school premises and as is more particularly delineated on the plan forming part of the first schedule hereto. In particular the access driveway from Wrights Avenue, the water supply, the power supply, the sewerage and stormwater drainage systems are all used in common and the costs of maintaining such services and facilities shall be apportioned as provided in Clause 24 hereof. If practicable the power supply to the school premises shall be separately metered at the expense of the Proprietor. Where such services or facilities are wholly or partly situated outside the integrated school premises the Proprietor will continue to make such services or facilities available to the integrated school premises.
26. WITH the agreement of the Board of Governors the Proprietor may be empowered to receive and issue receipts for the amounts payable to the Board of Governors by the parents of the pupils. Any moneys collected by the Proprietor on behalf of the Board of Governors shall be accounted for to the Board of Governors.
- 5
- 5
- 5

27. THE Proprietor acknowledges that Block J on the attached plan forming part of the first schedule exceeds the size for a comparable State school caretaker's house. The Proprietor and the Minister agree to share the costs of all exterior maintenance for the said Block J equally, and in respect of the interior of Block J the Proprietor shall be solely responsible for maintaining that part coloured blue on the said plan, and the Minister shall be solely responsible for that part coloured red on the said plan.
28. THE Proprietor acknowledges that Block C on the attached plan forming part of the first schedule exceeds the size for a comparable State school gymnasium. The Proprietor and the Minister agree to share the costs of all exterior and interior maintenance for the said Block C as to 40% by the Proprietor and as to 60% by the Minister. The Board of Governors is to receive all fees received pursuant to the provisions of Clause 2(b) (ii).
29. THAT the Proprietor acknowledges that the classrooms exceed the number of classrooms for a comparable State school. The Proprietor shall be responsible for the interior maintenance of areas 39 and 40 of Block A on the attached diagram forming part of the fifth schedule.
30. IT is acknowledged that until the school achieves a State pupil/teacher ratio equivalent to that of a comparable State school a teaching position shall be disestablished when the teacher appointed to that position in accordance with Section 71 of the Private Schools Conditional Integration Act 1975 leaves that position PROVIDED THAT a position may not be disestablished where in the opinion of a District Senior Inspector of Schools it is essential to fill that position in order to provide tuition in those
- Am. S.*
- S*
- Q.*

classes for secondary school pupils which a school is required to provide in accordance with the Education (Secondary Instructions) Regulations 1975.

31. THE Proprietor shall not engage any teacher between the date of execution of this deed of agreement and the effective date of integration other than those whose names have already been notified by the Proprietor to the Director-General of Education without first obtaining the consent of the Director-General.
32. THE effective date of this agreement shall be the 2nd day of February 1981.
33. ON and after the effective date specified in this agreement the school shall be an integrated school in terms of the Private Schools Conditional Integration Act 1975.
34. THE Proprietor enters into and executes this agreement pursuant to the powers contained in Section 7 (3) of the Private Schools Conditional Integration Act 1975. The school was founded in 1911 and the Proprietor has since 1953 administered the school premises and the school pursuant to the powers contained in the Statute of Synod. The Proprietor agrees to take all steps within its power to have the said Statute amended to bring it into harmony with the provisions of this agreement and of the Private Schools Conditional Integration Act 1975.

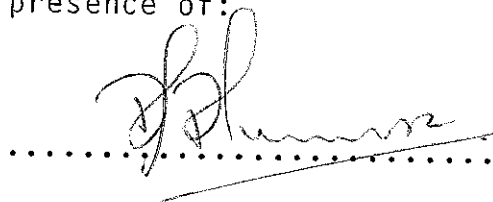
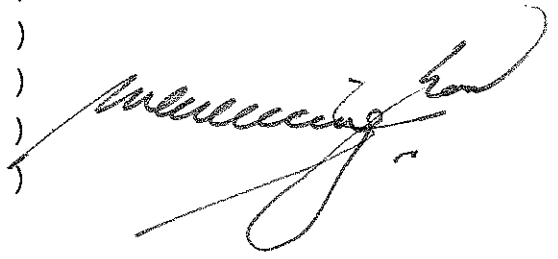
IN WITNESS WHEREOF these presents have been executed the day and year first hereinbefore written.

THE COMMON SEAL of CRAIGHEAD)
DIOCESAN SCHOOL TRUST BOARD)
was hereunto affixed in the)
presence of:)

Helena D.R. McFadden Member
Mythuan Member
..... Member



SIGNED FOR AND ON BEHALF OF)
HER MAJESTY THE QUEEN BY)
MERVYN LANGLOIS WELLINGTON)
MINISTER OF EDUCATION in the)
presence of:



Witness

Private Secretary

Occupation

168 Helston Road
Wellington.

Address

5 

Am G.

FIRST SCHEDULE

Description of total land, buildings and other improvements comprising the Proprietor's land of which the integrated school premises form part.

The Proprietor's Land

All that land, school buildings, residences, offices, chapel and other improvements the registered Proprietor whereof is the Craighead Diocesan School Trust Board.

All that parcel of land containing 3.2354 hectares more or less situated in the City of Timaru being Lot 1 on Deposited Plan 40947 Certificate of Title 18B/1238 subject to Mortgage 182085/1 to The Church Property Trustees and being Lots 1 and 2 on Deposited Plan 6273 and part of Lots 8 and 9 on Deposited Plan 9881 Certificate of Title 1D/863 subject to Mortgage 818757 to The Church Property Trustees and being Lots 36 and 37 on Deposited Plan 3110 and Lots 1 and 3 Deposited Plan 3203 Certificate of Title 281/97 SUBJECT to Mortgage 65448/1 to The Housing Corporation of New Zealand and being Lot 2 Deposited Plan 3203 Certificate of Title 293/20 SUBJECT to Mortgage 172777/8 to The Craighead Old Girls Association (Inc.).

Sam I

SECOND SCHEDULE

Water Colour painting of Mt. Hutt - A.A. Deans
Etching Shand - B. Wilson
Oil Hauraki Gulf Coromandel - Aston Greathead
Still Life Water Flowers - M. Crooks
"Winter At Makarora" - B. Halliday
"The Road To Erewhon" Print - A Deans
Mt. Cook Original Oil - William Greene
Print of "The Young Wet Nurse" - Modigliani
Original Prototype School Coat of Arms
Coloured Aerial Photo School Grounds
"The Opening Of Parliament" Print
Linocut "La Figura"-Betty Curnow
Dr. and Mrs. Shackletons' Challenge Cup
Mrs. Gilbert Grigg's Challenge Cup
Mr. and Mrs. Jen. Qualife's Cup
Mr. and Mrs. Burnett's Cup
Mr. and Mrs. B. Howell's Cup
Mr. and Mrs. H.B.L. Johnstone's High Jump Cup
Miss D. Kerr's Cup
Major P. Johnstone's Cup
Mr. and Mrs. R.M.D. Johnston's Cup
Mr. and Mrs. D. Deans' Cup
Mr. and Mrs. James Deans' Cup
Mr. and Mrs. J.M. Thompson's Cup
Mr. and Mrs. P.C. Ensor's Cup
Old Girls' High Jump Cup
Mr. and Mrs. F.H. Courage's Cup
Mr. and Mrs. Paterson's Cup
Mr. and Mrs. R.P.A. Thomson's Cup
Mr. and Mrs. H.B.S. Johnstone's Cup
Buckley Long Jump Challenge Cup
Mr. and Mrs. A.E.P. Kilian's Challenge Cup
Mr. and Mrs. P. Elworthy's Cup
Miss. J.A. Hayes' Schools Championship Cup
J. and R. Jones' Cup
Mr. and Mrs. C.L. Orbell's Cup
Giles School Handicap Form Relay Cup
Mr. and Mrs. E.R. Curtis' House Relay Cup
House Challenge Cup
Fenton Garland's Cup
Mr. and Mrs. A. Shirtcliff's Cup

Stu T.

W.

Dr. K. Boardman's Cup
Jocelyn Hays' Cup
Stephanie Smillie's Cup
Cup for Champion Sportswoman
Cup for General Excellence
Cup for Tiffany Stewart Prize
House Debating Cup
Typewriting Cup
House Competition Scroll
House Singing Cup
Junior Singing Cup
Virginia Gray's Biology Cup
Mrs. Todd's Junior Public-Speaking Cup

Shields Netball
 Hockey
 Swimming
 Softball
 Tennis
 Handicraft

House Choirs Music Conducting Baton
Mrs. Rudenklaue's Senior Singing Cup
Miss Rudge's Senior Piano Cup
Miss Fletcher's Singing Cup
Miss H.D. Turner's Individual Speech Cup
Mrs. Hamilton's General Knowledge Cup
Old Girls' Senior Sewing Cup
Miss G. Harper's Homecraft Cup
Betty Hayman's Memorial Cup
Mr. and Mrs. Scott's History Cup
Mr. and Mrs. Bryan King's Literature Cup
Mr. and Mrs. M. Raymond's Cup
Violet Monica Salmond's Memorial Cup
Form Gym Cup
Mr. and Mrs. J.H.K. Woodhouse's Cup
Miss B. Mitchell's Junior Diving Cup
Miss R. Paine's Cup
Dr. Fraser's Cup
Intermediate Diving - Mr. and Mrs. G. Neills' Cup
Sir Bruce and Lady Stewart's Cup
Miss P. Tripp's Cup
Mrs. B. Howell's Cup
Miss P. Raymond's Cup

Group

5

9

Miss S. Pickerill's Cup
Miss A. Johnstone's Cup
Miss B. Howell's Cup
Miss S. Woodhouse's Cup
Senior Swimming Championship Cup
L. Morrison's Cup
Miss R. and S. Swales Cup
Mr. and Mrs. H. Harper's Cup
Mr. and Mrs. F.W. Dunlop's Cup
Mrs. J.B. Beckett's Cup
Miss V. Campbell's Improvement Cup
Helen Judge's Cup Champion House of the Year
Junior Piano Cup
Mrs. Herrick's Individual Drill Cup
Miss H. Fulton's Hockey Cup
Mrs. Ulrich's Lifesaving Cup
Sunburst Yacht - "Solar"

S. G. Jones

J. W.

THIRD SCHEDULE

CRAIGHEAD DIOCESAN SCHOOL TRUST BOARD SPECIAL FUNDS

(a)	Development Project Appeal Account	\$916.00
(b)	Special Prize Fund	907.00
(c)	Building and Development Fund	6,459.00
(d)	Chapel Fund	550.00
(e)	Entrance Fee Fund	3,402.00
(f)	Fees Insurance Fund	4,391.00
(g)	Fair Fund	8,554.00

Handwritten signature

Handwritten mark

Handwritten mark

FOURTH SCHEDULE

CRAIGHEAD DIOCESAN SCHOOL TRUST BOARD EXISTING MORTGAGES

(a)	The Housing Corporation of New Zealand	37,880.00
(b)	Church Property Trustees	49,000.00
(c)	Church Property Trustees	13,362.00
(d)	Church Property Trustees	7,800.00
(e)	Craighead Old Girls' Association (Inc.)	18,000.00

W. H. P.

1/6

5

9..

CRAIGHEAD DIOCESAN SCHOOL, TIMARU

WORKS TO BE CARRIED OUT BY THE PROPRIETOR IN RELATION TO THE INTEGRATED SCHOOL

FIFTH SCHEDULE

These works are to be planned, executed and paid for by the proprietor subject to the provisions of this schedule in relation to the buildings and associated facilities to bring them up to the minimum standard for a comparable state school.

AGREED PHASING OF WORK TO BE COMPLETED BY

SITE	AGREED PHASING OF WORK TO BE COMPLETED BY					
	2.2.81	31.3.82	31.3.83	31.3.84	31.3.85	31.3.86
<p>Repair gates west boundary. Fit calib west boundary gates. Repair tennis court paving north and east edges. Replace broken incinerator with one complying with the requirements of the Clean Air Act. Repair all school boundary fences to state standards.</p>		x x x x		x		
<p>BLOCKS A & D</p> <p><u>Exterior</u> Repaint exterior, clean down timber, spot prime and apply 2 coats of paint. Clean down cement asbestos roof and treat with antifungicide. Paint galvanised corrugated iron roofs. Replace broken fixed seating and repaint. Restore hardware to door area 17. Replace broken glass area 11. Remove mould growth from wooden fire escape and treat with an antifungicide. Replace handrail to fire escape south wall and paint.</p>		x x x x x x x			x x x	
<p><u>Interior</u> Area 1 Remove plant growth (ivy) through wall.</p>		x				

Am p

	2.2.81	31.3.82	31.3.83	31.3.84	31.3.85	31.3.86
BLOCKS A & D INTERIOR CONT						
Area 5						
Resurface island benches.						
Repair taps to benches.		x				
Repair broken glass of cupboards		x				x
Area 9						
Make good manhole in ceiling.		x				
Area 10						
Replace broken wc seat.		x				
Area 12						
Repair doors to Area 8 and Area 13.		x				
Area 17						
Resurface pinboards.			x			
Repair podium.		x				
Area 18						
Repair lockset.						
Resurface pin boards		x	x			
Fit new thresh-hold exterior doors.		x				
Area 20						
Secure bag shelves.		x				
Area 29						
Resurface pin board.		x				
Repair linc on landing.		x				
Area 33						
Repair bench top.		x				
Area 35						
Secure podium.		x				
Repair damaged folding door.		x				

	2.2.81	31.3.82	31.3.83	31.3.84	31.3.85	31.3.86
BLOCKS A & D INTERIOR CONT						
Area 37 Repair french door.		x				
Area 40 Replace damaged stile to door.		x				
Area 42 Repair fire escape door.		x				
Area 39 Repair door.		x				
<u>Mechanical</u> Areas 1 and 5 Upgrade gas outlet valves and screwed galvanised pipework to state school standards.		x				
Area 5 Install fan in fume cupboard to state school standards.		x				
<u>Switchboards</u> Area 18 Overhaul board and switch gear.		x				
Area 42 Overhaul board and switch gear on switch board out- side area 37.		x				
Overhaul main switch board for block and install additional switch board for new heating load.		x				
<u>Wiring</u> Rewire original wiring.		x				
Areas 39, 40 and 42 Protect surface cables against mechanical damage.		x				

AGREED PHASING OF WORK TO BE COMPLETED BY

BLOCKS A & D ELECTRICAL WIRING CONTD		2.2.81	31.3.82	31.3.83	31.3.84	31.3.85	31.3.86
Area 42 Replace lampholder outside Area 36.		x					
Area 21 Alter wiring to 2 ceiling lights.			x				
Area 32 Renew flex on rangette.		x					
<u>Lighting</u> Renew lighting installation in Block A to state school standards.							x
Area 1 Install anti-glare screen to blackboard fluorescent light.					x		
Area 5 Remove temporary blackboard spotlight.		x					
<u>Heating</u> Provide additional heating throughout Block A to provide an inside temperature of 18°C, with an outside temperature of 20°C. Renew flexes on all existing heaters.		x			x		
Area 14 Remove extension flex to heater and install permanently connected outlet.		x					
Areas 5, 16, 17, 18, 37 and 38 Install permanently connected outlets to heaters.			x				
Areas 2, 29 and 32 Remove portable radiant heaters.		x					

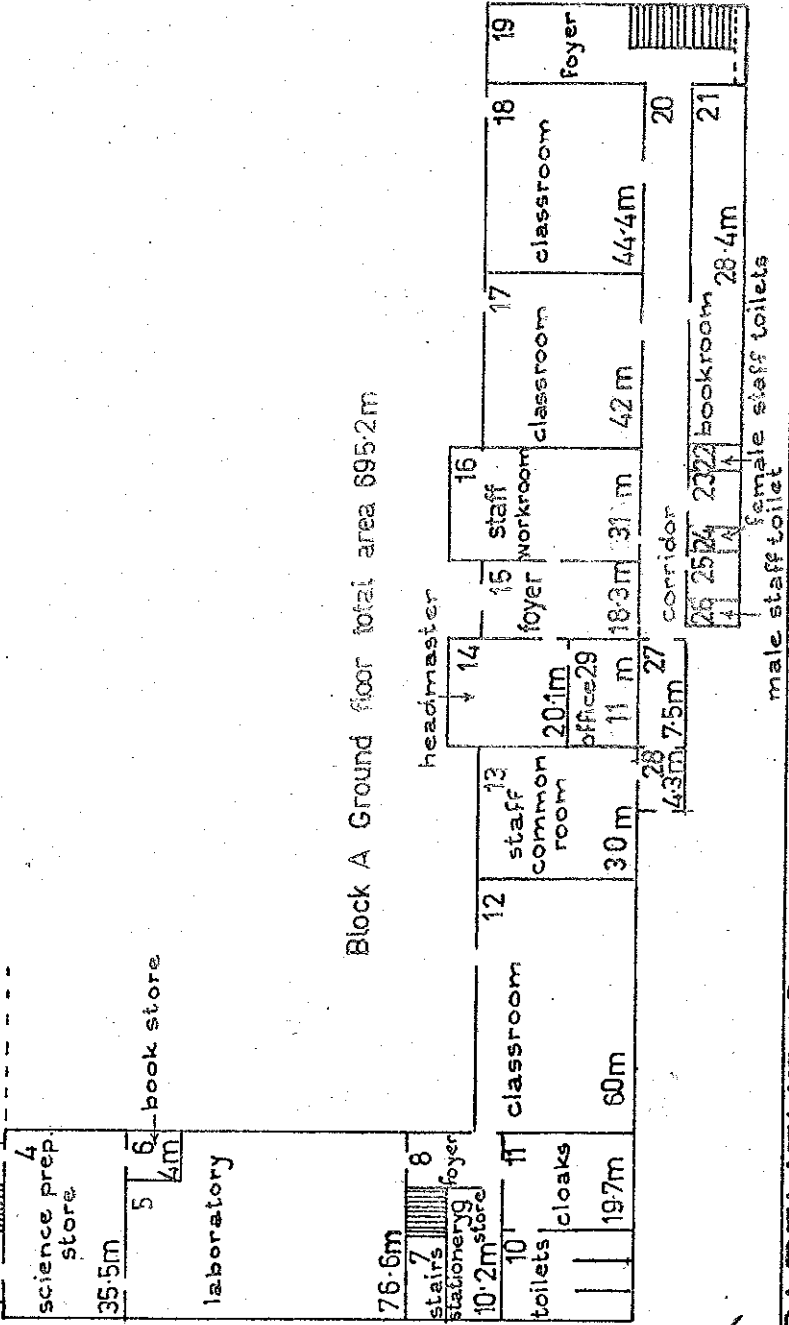
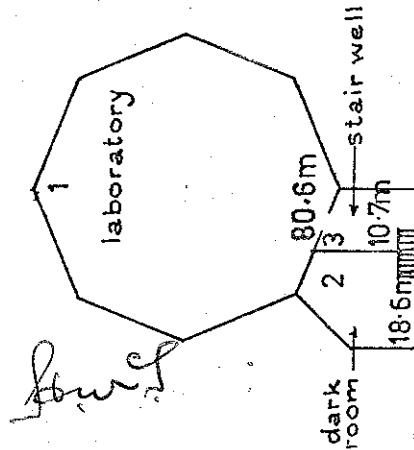
BLOCKS A & D ELECTRICAL CONTD	2.2.81	31.3.82	31.3.83	31.3.84	31.3.85	31.3.86
<u>Plug Sockets</u> Area 1 Install CBEL unit.						
Area 5 Provide loval switchboard and CBEL unit.					x	
Areas 12, 17, 18, 35 and 36 Install 3 additional plug sockets in each area.					x	
Area 38 Install two additional plug sockets.					x	
Areas 14, 20 and 37 Install one additional plug socket in each area.					x	
<u>Fire Protection</u> Area 12, Area 17 Replace lock on secondary egress door so that it can be opened from the inside without the use of a key.	x				x	
Area 18 Remove bolts and replace lock on secondary egress door as above.	x					
Area 19 Enclose stairway with one hour fire resistance rated partitions and doors and provide stairway walls with the same fire rating.	x					
Area 31 Fit door to stair with self-closing device.	x					
Area 35 Fit communicating door to Area 36 through folding partition.	x					

	2.2.81	31.3.82	31.3.83	31.3.84	31.3.85	31.3.86
BLOCKS A & D FIRE PROTECTION CONTD						
Area 36 Provide communicating door to Area 37.	x					
Area 37 Remove padlock from alternative exit door to balcony and replace with a half-latch device. Provide an inclined stairway to ground as required by MWD.	x					
Area 38 Alter window to side hung type to provide access to outside balcony.	x					
Area 39 Remove lock from communicating door to Area 40 and keep clear at all times. Provide communicating door to Area 38.	x					
Fire Protection General Upgrade LPG installation to the requirements of the Department of Labour. Install a low voltage fail safe, manual fire alarm system with break glass call points and bells in the following locations: Areas 1, 8, 15, 20. Outside areas 18, 30, 34 adjacent to stair, 42 outside Area 38.		x				
Provide hose reels, fitted with 25m of 12mm tubing in the following locations: Areas 8, 20, outside space 16, 34 adjacent to stair, 42 outside space 38. Completely reline walls and ceilings except ceilings in Areas 4, 5, 6 and 7 with a fire retardant material of not less than that provided by 9mm plasterboard or fibrous plaster.	x			x		x

	2.2.81	31.3.82	31.3.83	31.3.84	31.3.85	31.3.86
<p>BLOCK J CONTD</p> <p><u>Interior</u> Redecorate Area 134.</p> <p><u>General Electrical</u> Upgrade electrical supply mains as necessary. Install check meter on switchboard Block B to isolate power supplied to Blocks A & D. Provide new submains to Block A if necessary. All buildings - any additional work resulting from reinspection of consumer's premises by the local supply authority following upgrading work to specifications of proprietors electrical consultant engineer.</p> <p><u>Furniture and Equipment</u> Upgrade all furniture to state school standards. Provide equipment deficiencies to state school standards in the following areas: Principal's office. One swivel chair. Tea Service. Staff Kitchen - complete issue. Staff Restroom - complete issue. Casualty / Sickbay (pupils) complete issue. Administration Office - teachers chair. - office desk. - typists desk. - sampson trolley. - hand trolley.</p> <p>Teachers desks 4 Teachers chairs 4 Library - issuing desk.</p>		<p>x x</p>	<p>x</p> <p>x x x x x x x x x x x</p>			<p>x</p> <p>x</p> <p>x</p>

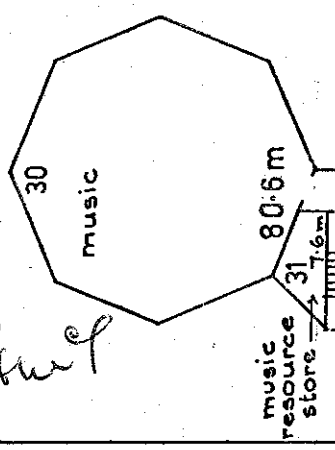
AGREED PHASING OF WORK TO BE COMPLETED BY

2.2.81	31.3.82	31.3.83	31.3.84	31.3.85	31.3.86
<p><u>Building Requirements</u> Provide the following facilities by remodelling Block A:</p> <p>Relocate art/craft suite on ground floor 95m². Provide separate free standing kiln shed in new construction 10m². Library 95m² PR Office 3 x 7.5m² Staffroom of 19m² Staff Kitchen of 4.5m² Staff Restroom of 4.5m² Administration office of 19m² Casualty/Sickbay (pupils) of 9m² Caretaker's office of 7m² Resource Storage totalling 47m² Pupil toilets - 3 wc, 2 wash hand basins, 1 STD U Rebuild changing shed (pool) Rebuild filter shed</p>	<p>x</p> <p>x</p> <p>x</p> <p>x</p> <p>x</p> <p>x</p> <p>x</p> <p>x</p> <p>x</p> <p>x</p> <p>x</p> <p>x</p> <p>x</p>	<p>x</p> <p>x</p> <p>x</p> <p>x</p> <p>x</p> <p>x</p> <p>x</p> <p>x</p> <p>x</p> <p>x</p> <p>x</p> <p>x</p> <p>x</p>	<p>x</p> <p>x</p> <p>x</p> <p>x</p> <p>x</p> <p>x</p> <p>x</p> <p>x</p> <p>x</p> <p>x</p> <p>x</p> <p>x</p> <p>x</p>		

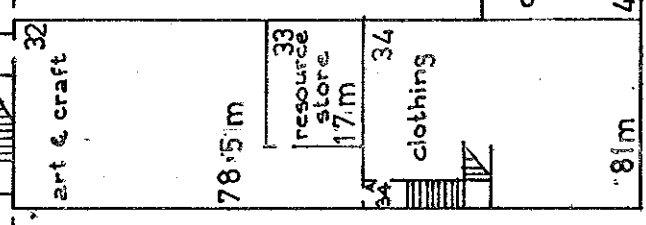


DEPARTMENT OF EDUCATION		Drawing No:	Scale:
buildings division: integration of private schools		EIS 076 02	1 300
School: CRAIGHEAD DIOCESAN SCHOOL TIMARU.		Date:	Revision
		27 June 1979	11 JULY 1980
		Revision	288
		1 August 1979	Drawn:

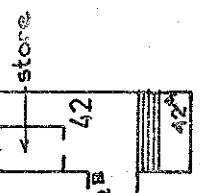
Handwritten signature



Block D First floor

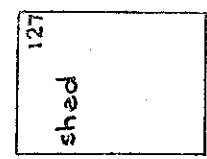
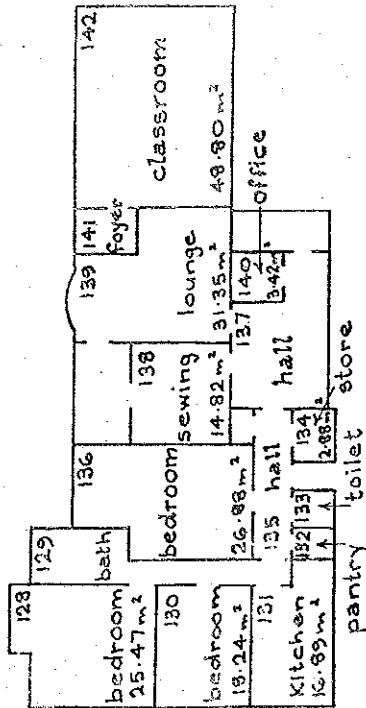


Block A First floor total area 657.2m

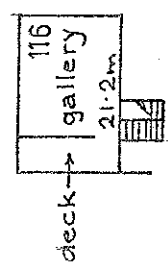


DEPARTMENT OF EDUCATION
 buildings division: integration of private schools
 School: CRAIGHEAD DIOCESAN SCHOOL TIMARU

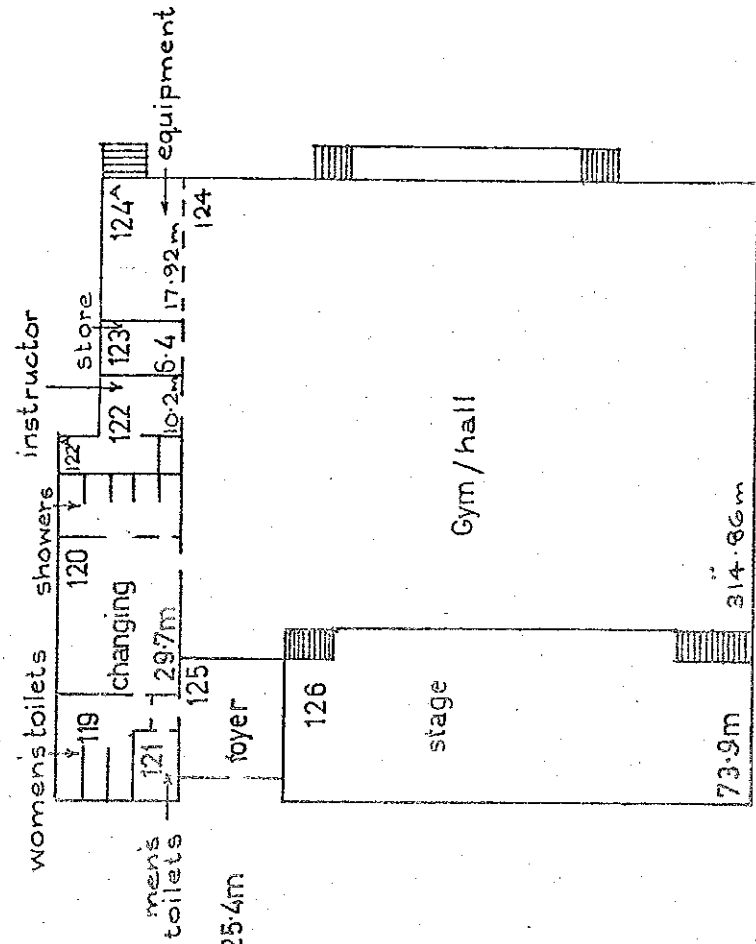
Drawing No:	EIS 076 03	Scale:	1: 300
Date:	2 July 1979	Revision	11 JULY 1980 <i>228</i>
Revision	1 August 1979	Drawn:	<i>MM</i>



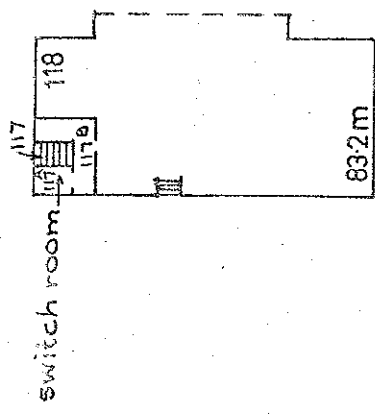
Part Block J



First floor total area 254m



basement total area 85.7m



Block C

Ground floor total area 655.6m

DEPARTMENT OF EDUCATION
buildings division: integration of private schools
School: CRAIGHEAD DIOCESAN SCHOOL TIMARU.

Drawing No:	EIS 076 06	Scale:	1:300
Date:	5 July 1979	Revision	11 JULY 1980
Revision	1 August 1979	Drawn:	ses

SIXTH SCHEDULE


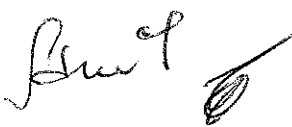

HISTORICAL RESUME OF THE DEVELOPMENT OF THE SPECIAL CHARACTER OF CRAIGHEAD DIOCESAN SCHOOL

The Special Character of the School has evolved from its foundations as a Private School for Girls and its long association with the Diocese of Christchurch, of the Church of the Province of New Zealand, as an Anglican School.

The school was founded in May of 1911 and was begun in the building now known as Shand House. This building was the original Craighead homestead and was purchased by Professor Shand of Otago for the foundation of a school. His four daughters founded the school, the first Headmistress being Miss. Eleanor Shand and, after she left to be married at the end of 1913, Miss Fanny Shand succeeded her as Headmistress. This position she retained until 1926 .

The original prospectus states that "the main aim of the school will be to give such a liberal education on modern lines as will be best fitted to train the intellectual, artistic and moral faculties, to develop the character and ultimately to produce refined, cultured and capable young women. Careful attention will be paid to the health, physical exercise and recreation of the pupils".

From the beginning emphasis was placed on the teaching of both French and German as well as Art and Music and, as befitted a boarding school, considerable attention was paid to extra-curricular activities. Spiritual values were ranked highly and religious education was given through the school.



In 1916 the Misses Shand wished to retire from teaching and negotiated with the Christchurch Diocesan Board of Education for the sale of the school. A Committee of Trustees was formed and the school was purchased on behalf of the Church. Craighead functioned as an Anglican School under the general oversight of the Diocesan Board of Education until 1925 when, under the Schools and Youthwork Statute, a new Board of Governors was set up, having the Bishop as ex-officio Chairman and a Committee of up to eight members, including representatives of Synod as well as local representatives. In 1953 a new statute was passed by Synod under which the Board of Governors became the Craighead Diocesan School Trust Board.

From the beginning it has been very much a family school with a happy atmosphere and sturdily rooted in the Christian faith. Regular Christian worship and teaching in accordance with Anglican tradition has been a feature of the school, the former being centred upon the separate school Chapel which was dedicated in 1948 to replace a smaller Chapel within the school buildings. The money for this was raised entirely by the efforts of the girls at the time.

High academic standards have been sought throughout the school's history and Honours Boards within the school dining hall bear record of the academic honours of the earlier years.

The school has under several distinguished Principals been very conscious of its aim to provide a sound, broadly-based education which will equip the pupils for a career and university studies and, by extra

[Handwritten signature]
[Handwritten signature]
[Handwritten signature]

curricular activities, to develop their interests and potentialities. At the present time the school commences at 8.30 a.m. with assembly and has six teaching periods followed by a games or hobbies period finishing at 4.30 p.m. except on Fridays when the games or hobbies period is deleted and the school finishes at 3.30 p.m. The friendly, family atmosphere of the school has been carefully safeguarded and through the years communal worship in the Chapel and a programme of religious education have formed an integral part of the school life.

[Handwritten signature]
[Handwritten signature]
[Handwritten signature]