

THIS DEED OF AGREEMENT is made the 5 day of November,  
One thousand nine hundred and eighty one (1981)  
BETWEEN THE ROMAN CATHOLIC ARCHBISHOP OF THE ARCHDIOCESE  
OF WELLINGTON a "Corporation Sole" (hereinafter with  
his successors referred to as "the Proprietor") of the first  
part and HER MAJESTY THE QUEEN acting by and through the  
Minister of Education (hereinafter referred to as "the  
Minister") of the second part

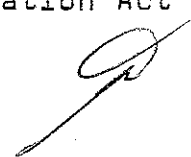
WHEREAS

- A The Proprietor is the owner of Sacred Heart School,  
Guilford Terrace, WELLINGTON  
(hereinafter referred to as "the School")
- B The School is a Roman Catholic Primary School for boys  
from new entrants to standard two and for girls from  
new entrants to form two offering Education with a  
Special Character.
- C The School was established in 1850 and up to the  
effective date of integration was in part staffed  
by members of the Roman Catholic Religious Order  
of Women, known as the Sisters of Mercy.  
The said Order will continue after the effective date of  
integration to offer teaching staff to the School so long  
as it has members available for that purpose.
- D The Minister and the Proprietor have agreed to enter  
into this Deed of Agreement pursuant to the Private  
Schools Conditional Integration Act 1975, whereby the  
School is to be established as an integrated school.

NOW THIS DEED OF AGREEMENT WITNESSETH THAT IT IS HEREBY  
COVENANTED AGREED AND DECLARED BY AND BETWEEN THE PARTIES  
HERETO AS FOLLOWS :-

1. THAT the Minister and Proprietor HEREBY AGREE that  
the School is to become an integrated School pursuant  
to the Private Schools Conditional Integration Act 1975.

*jpw*



2. THE School's Special Character as is hereinafter described, shall incorporate the Education with a Special Character as provided in the School AND IT IS HEREBY AGREED AND DECLARED that the School shall at all times in the future be conducted and operated so as to maintain and preserve the School's Special Character and these presents shall be interpreted so as to maintain and preserve the Special Character of the School.

3. ON behalf of the Proprietor it is hereby agreed that:

(a) The Proprietor is the owner of all the land and improvements more particularly described in the First Schedule hereto (hereinafter referred to as "the Proprietor's land") and of which for the purposes of this Deed of Agreement, the School premises form part only. The School premises for the purposes of this Deed of Agreement being the land and improvements more particularly described in the Second Schedule hereto (hereinafter referred to as "the School premises").

(b) The Proprietor shall set apart and appropriate as owner all the School premises and all the chattels and other assets of the Proprietor associated with the School exclusively for the purposes of the School as an integrated School, so that the Controlling Authority of the School shall have the exclusive right to the possession and use of the School premises and chattels

- PROVIDED THAT -

*JW*



- (i) At the request of the Proprietor, the School Committee may grant the use of the School premises and chattels to the Proprietor or other person or persons at any time when the School premises and chattels are not required for school purposes and the School Committee shall not unreasonably or arbitrarily withhold its consent. The School Committee may require the Proprietor or other person or persons to pay a reasonable fee to the School Committee as a condition of such use.
- (ii) With the consent of the Proprietor, the School Committee may grant the use of the School premises and chattels to other person or persons at any time when the School premises and chattels are not required for School purposes and the Proprietor shall not unreasonably or arbitrarily withhold his consent. The School Committee may require any such person or persons to pay a reasonable fee to the School Committee as a condition of such use.
- (c) The Proprietor shall accept and meet the liability for all mortgages, liens and other charges upon the land and buildings comprising the School premises.
- (d) The Proprietor shall plan, pay for, and execute the improvements described in the Third Schedule hereto, to the School premises so as to bring the School buildings and associated facilities forming

*JAW*



part of the School premises up to the minimum standard for comparable State Schools prevailing at the effective date of this Deed of Agreement. Such improvements to be carried out in accordance with the dates specified against such improvements in the Third Schedule hereto. The Proprietor shall upon completion of any improvements to electrical services described in the Third Schedule hereto arrange for the local Electrical Supply Authority to inspect the School premises in terms of Regulation 45 of the Electrical Supply Regulations 1976.

- (e) The Proprietor shall plan, execute and pay for such capital works and associated facilities at the School as may be approved or required, from time to time, by the Minister pursuant to Section 40 (2) (d) of the Private Schools Conditional Integration Act 1975.
- (f) The Proprietor may own or hold upon trust, and control and maintain, any land, buildings and associated facilities that, although not part of the integrated School premises in terms of this Deed of Agreement are regarded by the Proprietor as appropriate to maintain the Special Character of the School.
- (g) The Proprietor shall insure all the buildings forming part of the School premises and the Proprietor's chattels (if any) owned or held upon trust for the purposes of the School and the other assets owned by the Proprietor for the purposes of the School against risks

*JW*



normally insured against, in some responsible insurance office in New Zealand, and further acknowledges the obligation on him created by Section 40 (2) (h) of the Private Schools Conditional Integration Act 1975.

- (h) No person employed at the School and paid for his services in whole or in part out of moneys appropriated by Parliament, shall be paid by the Proprietor or his servants or agents any remuneration additional to that provided for by the Private Schools Conditional Integration Act 1975 or shall be granted or permitted any condition of service more favourable than that permitted in the case of a person employed in a comparable position in a State School PROVIDED HOWEVER that a teacher to whom the provisions of Section 71 of the Private Schools Conditional Integration Act 1975 apply, shall continue to be paid no less than the same salary, and be accorded the same status, as he received or was accorded on the day before the effective date of the integration of the School.

4. THE land and buildings constituting the School premises are subject to the mortgages, debts, liens, encumbrances, easements, licences, restrictions and other matters which affect the title to or enjoyment of the land and have the appurtenances or benefits attaching to the land more particularly described in the First Schedule hereto.

*JPW*



5. THE Special Character of the School is that it is a Roman Catholic School for boys and girls established by the Roman Catholic Archbishop of the Archdiocese of Wellington, New Zealand, for the Roman Catholic community of the Archdiocese of Wellington which promotes and supports the School and of which the School is part, to provide and to continue to provide Education with a Special Character, that is to say :

The School is a Roman Catholic School in which the whole School community through the general School programme and in its Religious instructions and observances, exercises the right to live and teach the values of Jesus Christ. These values are as expressed in the Scriptures and in the practices, worship and doctrine of the Roman Catholic Church, as determined from time to time by the Roman Catholic Archbishop of the Archdiocese of Wellington.

6. THE Proprietor of the School subject to the provisions of this Deed of Agreement :

- (a) Shall continue to have the responsibility to supervise the maintenance and preservation of the Education with a Special Character provided by the School;
- (b) Shall continue to have the right to determine from time to time what is necessary to preserve and safeguard the Special Character of the Education provided by the School and described in this Deed of Agreement;

JHW



- (c) May invoke the powers conferred upon him by the Private Schools Conditional Act 1975, if in the opinion of the Proprietor the Special Character of the School as defined and described in this Deed of Agreement has been or is likely to be jeopardised or the Education with a Special Character as defined and described in this Deed of Agreement is no longer preserved and safeguarded.

7. (a) THE Controlling Authority of the School shall be the Education Board of the Wellington Education District as constituted pursuant to Section 15 of the Education Act 1964.

- (b) The School shall be managed by a School Committee constituted pursuant to the provisions of Section 26 of the Private Schools Conditional Integration Act 1975. The School Committee shall consist of :

(i) One (1) member to be appointed by the Proprietor of the School;

(ii) Six (6) members to be elected by the parents of children attending the School PROVIDED HOWEVER that in the event of the School roll altering at any time then the number of such members shall be fixed by ascertaining the number of members that a State School Committee would have, based on the current School roll in accordance with the provi-

JW



sions of the School Committees Administration Regulations 1965 and subtracting one from that number.

- (c) Any election conducted pursuant to Section 26 of the Private Schools Conditional Integration Act 1975 shall be conducted as nearly as possible in the manner prescribed by the School Committees Administration Regulations 1965 and any regulations made in amendment thereof or in substitution therefor and the provisions of those regulations shall, with any necessary modifications, be applied accordingly.
- (d) The control and management of the School shall be exercised subject to the provisions of Section 25 (6) of the Private Schools Conditional Integration Act 1975.

8. THE School had a roll of one hundred and seventy-six (176) pupils as at the 30th September 1981 being the year when the roll figures were last compiled. It is agreed by and between the parties hereto that the maximum roll of the School shall be one hundred and eighty-one (181) pupils.

9. THE Proprietor agrees that pursuant to Paragraphs (d) and (e) of Clause 3 of this Deed of Agreement he will bring the School up to the minimum standard of accommodation laid down from time to time by the Director-General for a comparable State School.

*HW*





10. (a) PREFERENCE of enrolment at the School under Section 29 (1) of the Private Schools Conditional Integration Act 1975 shall be given only to those children whose parents have established a particular or general religious connection with the Special Character of the School and the Controlling Authority shall not give preference of enrolment to the parents of any child unless the Proprietor has stated that those parents have established such a particular or general religious connection with the Special Character of the School.
- (b) In accordance with Section 7 (6) (h) of the Private Schools Conditional Integration Act 1975, unless the Proprietor and the Controlling Authority otherwise agree and subject to places being available, the number of pupils whose parents do not have a preference of enrolment at the School in accordance with the provisions of Section 29 (1) of the Private Schools Conditional Integration Act 1975 shall be limited at all times to nine (9) pupils out of the total roll of the School and the Controlling Authority shall not enrol more than that number PROVIDED THAT to maintain and preserve the Special Character of the School the Controlling Authority in classifying such pupils so enrolled shall endeavour to reasonably distribute them through the range of classes offered by the School.

- (c) Wherever any difficulty arises related to enrolment at

*pw*




the School in terms of Section 54 of the Private Schools Conditional Integration Act 1975, it may be referred to the Controlling Authority of the School pursuant to the provisions of the said section.

11. IT is agreed by and between the parties hereto that as Religious observances and Religious instruction form part of the Education with a Special Character provided by the School, Religious observances and Religious instruction in accordance with the determination made from time to time by the Roman Catholic Archbishop of the Archdiocese of Wellington shall continue to form part of the School programme in accordance with Sections 31 and 32 of the Private Schools Conditional Integration Act 1975.

12. THE Proprietor, together with his servants, agents and licensees shall, subject to the proviso to Section 40 (2) (i) of the Private Schools Conditional Integration Act 1975, have at all reasonable times access to the School to ensure that the Special Character of the School is being maintained.

13. THE Proprietor, together with his servants, agents and licensees, shall have at all reasonable times access to the land and buildings of the School constituting the School premises sufficient to enable him to exercise the powers and carry out the responsibilities vested in him and imposed on him by the Private Schools Conditional Integration Act 1975 and by this Deed of Agreement.

*JWS*



14. AN advertisement for the position of Principal of the School shall in accordance with Section 65 (1) (a) of the Private Schools Conditional Integration Act 1975 state that a willingness and ability to take part in Religious instruction appropriate to the Special Character of the School shall be a condition of appointment. Any person so appointed to the position of Principal shall accept these requirements as a condition of appointment. The Principal so appointed shall accept and recognise a responsibility to maintain and preserve the Special Character of the School.

15. THERE shall be a position at the School to be designated Director of Religious Studies in accordance with Section 65 (1) (b) of the Private Schools Conditional Integration Act 1975, which position shall be part of the normal staffing entitlement of the School as established by Regulations made under the Education Act 1964 and an advertisement for that position shall state that a willingness and ability to take part in Religious instruction appropriate to the Special Character of the School shall be a condition of appointment. Any person so appointed to the position of Director of Religious Studies shall accept these requirements as a condition of appointment. The Director of Religious Studies shall give guidance and provide effective leadership in Religious instruction and observances throughout the School PROVIDED HOWEVER that in the event of the staffing entitlement of the School altering at any time during the currency of this Deed of Agreement then the position of Director of Religious Studies shall be determined in accordance with the then current staffing entitlement of the School under the Education Act 1964 and Regulations made thereunder and as is more particularly described in the Fourth Schedule ~~hereto~~.

*22/5*

16. A person appointed as aforesaid to the position of Director of Religious Studies at the School shall undertake such teaching duties, if any, as may be required by the Principal of the School.

17. IN the event of the staffing entitlement of the School altering at any time during the currency of this Deed of Agreement, whereby the School becomes entitled to a position of Senior Teacher Junior Classes, it is agreed pursuant to Section 65 (1) (d) of the Private Schools Conditional Integration Act 1975 that the Controlling Authority of the School in advertising the position of Senior Teacher Junior Classes shall state that a willingness and ability to take part in Religious instruction appropriate to the Special Character of the School shall be a condition of appointment. Any person so appointed to the position of Senior Teacher Junior Classes shall accept these requirements as a condition of appointment.

18. THERE shall be two (2) other teaching positions at the School which in accordance with Sections 65 (1) (c) of the Private Schools Conditional Integration Act 1975, shall be positions of importance carrying a responsibility for Religious instruction and an advertisement for those positions shall state that a willingness and ability to take part in Religious instruction appropriate to the Special Character of the School shall be a condition of appointment. Any person so appointed to these positions shall accept these requirements as a condition of appointment PROVIDED HOWEVER that in the event of the staffing entitlement of the School altering at any time during the currency of this Deed of Agreement then the number of teaching positions

*JWS*



designated under Section 65 (1) (c) of the Private Schools Conditional Integration Act 1975 as positions of importance carrying a responsibility for Religious instruction shall be determined in accordance with the then current staffing entitlement of the School under the Education Act 1964 and Regulations made thereunder and as is more particularly described in the Fourth Schedule hereto.

19. THE position of Deputy Principal at the School is agreed pursuant to Section 66 of the Private Schools Conditional Integration Act 1975 to be a special position that requires particular capabilities in the teacher appointed, namely to assist in planning and organising the courses and programmes at the School to ensure that they reflect the Special Character of the School and an advertisement for the position of Deputy Principal shall state that possession of these capabilities shall be a condition of appointment. Any person so appointed to the position of Deputy Principal shall accept these requirements as a condition of appointment.

20. THE Proprietor may with the consent of the Controlling Authority in accordance with Section 69 (1) of the Private Schools Conditional Integration Act 1975 arrange for any retired teacher to undertake voluntary tasks to assist in the School with the teaching of Religious observances and Religious instruction appropriate to the Special Character of the School.

21. IT is agreed by and between the parties hereto that as Religious observances and Religious instruction form part of the Education with a Special Character provided by the School

*JWS*

*[Signature]*

the Proprietor may employ any person as a Chaplain or otherwise, for the purposes of Religious observances or instruction and the provisions of Section 69 (2) and (3) of the Private Schools Conditional Integration Act 1975 shall apply.

22. THE Proprietor of the School shall have the right to enter into an Agreement with the parents or other persons accepting responsibility for the education of a child providing that, as a condition of enrolment and attendance of that child at the School, the parents or other persons shall pay attendance dues established in respect of the School or group of Integrated Schools owned by the Proprietor or Proprietors of other Roman Catholic Integrated Schools at such rates and subject to such conditions as may be approved from time to time by the Minister, by notice in the New Zealand Gazette in accordance with Section 36 of the Private Schools Conditional Integration Act 1975.

23. THE School is a Primary School for boys from new entrants to standard two and for girls from new entrants to form two and shall remain so until such time as an agreement to a change in this organisation of the School is reached between the Proprietor and the Minister and the parties hereto enter into a supplementary Deed of Agreement to give effect thereto.

24. WHERE any of the costs associated with the conduct of the Proprietor's land and buildings that are not part of the School premises cannot be separated from the costs associated with the operation of the School premises, the Proprietor and the school committee and/or the Controlling Authority shall contribute to such costs according to their respective use of the services and facilities.

*JW*

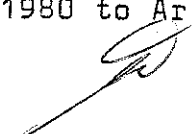
*[Signature]*

25. IT is acknowledged by and between the parties hereto pursuant to Clause 24 hereof that certain of the services and facilities on or serving the Proprietor's land and buildings thereon are used in common for the purpose of the School premises and as is more particularly delineated on the plan forming part of the Second Schedule hereto. In particular the power supply, the water supply and the sewerage and drainage systems are all used in common and the costs of maintaining such services and facilities shall be apportioned as provided in Clause 24 hereof. If practicable the power supply to the School premises shall be separately metered at the expense of the Proprietor. Where such services or facilities are wholly or partly situated outside the School premises the Proprietor will continue to make such services or facilities available to the School premises.

26. THE Proprietor shall not engage any teachers between the date of execution of this Deed of Agreement and the effective date of integration other than those whose names have already been notified by the Proprietor to the Director-General of Education without first obtaining the consent of the Director-General.

27. THE Proprietor shall reimburse the Minister for the payment of salary, wages and proportion of holiday pay due and paid by the Minister in respect of the 1981 School year to any person employed at the School up to the effective date of integration. PROVIDED THAT the Proprietor shall not be required to reimburse the Minister in respect of any salary, wages and holiday pay which has been paid to teachers up to the date of integration by the Minister in accordance with the terms of the Minister's letter of 4 December 1980 to Archbishop Williams.

*JW*



28. THE Minister shall be responsible only for the normal maintenance of the retaining walls on the School premises and all other expenditure in respect of the retaining walls on the School premises shall be the responsibility of the Proprietor.

29. THE Minister shall subject to Clause 3 (d) and (e) of this Deed of Agreement after the effective date hereof maintain the School premises and the associated facilities in a state of repair order and condition as for a comparable State School under the same Controlling Authority and provide for the maintenance of the chattels as though the School were a State School. The School shall be entitled to such furniture and equipment as the Controlling Authority supplies from time to time to comparable State Schools.

30. THE effective date of this Deed of Agreement shall be the 25th day of November, 1981.

31. ON and after the effective date specified in this Deed of Agreement the School shall be an integrated school in terms of the Private Schools Conditional Integration Act 1975.

IN WITNESS WHEREOF these presents have been executed the day and year first hereinbefore written.

*JW*





SIGNED by THOMAS STAFFORD WILLIAMS  
THE ROMAN CATHOLIC ARCHBISHOP OF  
THE ARCHDIOCESE OF WELLINGTON and  
Sealed with his Seal of Office in  
the presence of:

+ *Thomas S. Williams*

*P. O'Connor*  
*Clerk, 3 Eukston Hill,*  
*Wellington*

SIGNED FOR AND ON BEHALF OF  
HER MAJESTY THE QUEEN by MERVYN LANGLOIS  
WELLINGTON Minister of Education in the  
presence of:

*M. J. Folken*  
*12 Hohirua Road*  
*Hataitai, Wellington*  
*(Private Secretary)*

*Mervyn Langlois*

FIRST SCHEDULE


Description of total land, buildings and other improvements comprising the Proprietor's land of which the School premises form part

THE PROPRIETOR'S LAND

All that land, Cathedral, Presbytery, Residences, School Buildings and other improvements owned by the Roman Catholic Archbishop of the Archdiocese of Wellington situate at Guilford Terrace, Wellington, New Zealand, and being known as Sacred Heart School and Sacred Heart Basilica, Wellington, and being more particularly described as follows:

FIRSTLY: All that freehold parcel of land containing 4098m<sup>2</sup> more or less situate in the City of Wellington being parts of Sections 556, 557 and 558 on the public map of the Town of Wellington and being also Lot 3 on Deposited Plan 10013 and being all the land in Certificate of Title Volume 401 Folio 289 (Wellington Registry).

SECONDLY: All that freehold parcel of land containing 1636m<sup>2</sup> more or less situate in the City of Wellington being part of Section 558 of the Town of Wellington part of the said parcel of land being also part of Lot 2 on Deposited Plan 278 and being all the land in Certificate of Title Volume 454 Folio 178 (Wellington Registry).

THIRDLY: All that freehold parcel of land containing 945m<sup>2</sup> more or less situate in the City of Wellington being part of Section 558 on the public map of the Town of Wellington and being also Lot 4 on Deposited Plan No. 10013 and being all the land in Certificate of Title Volume 401 Folio 290 (Wellington Registry). 

There are debts owing to (1) the Archdiocesan Development Fund of the Roman Catholic Archdiocese of Wellington; and (2) the Bank of New Zealand.

SECOND SCHEDULE

Description of land, buildings and other improvements  
comprising the School Premises.

THE SCHOOL PREMISES

All that parcel of the Proprietor's land as described in  
the First Schedule hereto, delineated in red on the annexed  
plan of the Proprietor's land, which plan forms part of  
this Schedule TOGETHER WITH all the School buildings and  
other improvements thereon.

JPW

A handwritten signature, possibly reading 'JPW', is located in the bottom right corner of the page.

# SACRED HEART SCHOOL, THORNDON

## WORKS TO BE CARRIED OUT BY THE PROPRIETOR IN RELATION TO THE INTEGRATED SCHOOL

### THIRD SCHEDULE

These works are to be planned, executed and paid for by the proprietor subject to the provisions of this schedule in relation to the buildings and associated facilities to bring them up to the minimum standard for a comparable state school. All work is to be carried out by competent tradesmen or in a workmanlike manner to the Wellington Education Board standards.

#### AGREED PHASING OF WORK TO BE COMPLETED BY

SITE	25.11.81	31.3.83	31.3.84	31.3.85	31.3.86	31.3.87
<u>Fencing</u> Upgrade all boundary fencing to Wellington Education Board requirements		x				
<u>Hard Areas</u> <u>South Block A</u> Provide adequate drainage in front of Block A Repair patch broken seal where asphalt abuts base of building and build to fall into drain Replace stormwater sump grating at south east Check clean and clear all stormwater sumps		x				
<u>Grassed Area</u> Topsoil bare patches and hollows to bring to a level surface provide seed and fertilise Replace incinerator to Wellington Education Board requirements Remove dead wood and trim branches encroaching into fences at north eastern boundary Spray weeds around perimeter of hard areas, buildings and fence lines		x				
		x				
		x				
		x				
		x				
		x				

*[Handwritten signature]*

	25.11.81	31.3.83	31.3.84	31.3.85	31.3.86	31.3.87
<b>BLOCK A</b>						
<u>Exterior</u>						
Clear and clean all spouting gully traps and inspection chambers		x				
Service all drinking fountains		x				
Refix all down pipes securely to walls		x				
Secure all vent pipes to walls		x				
<u>South Elevation</u>						
Replace all rusted butt hinges to windows and paint repaired sash		x				
Fix seating, remove back cleat to wall and extend bearers		x				
Repair and refix stand pipe		x				
Replace door to basement		x				
Replace cracked weatherboard Area 21		x				
<u>South West Corner</u>						
Replace downpipe with cast iron to lower section and seal into gullytrap		x				
<u>West Areas</u>						
Repair exposed false work to gable end		x				
Complete asbestos cement sheet cover to foundations along footpath		x				
<u>North Areas</u>						
Make good damaged weatherboards		x				
Fix neatly overflashing to plinth		x				
Cover exposed cables		x				
Replace rusted nails to all windows and make good		x				
<u>North and East of Area 22</u>						
Upgrade windows						
Repaint		x				

x

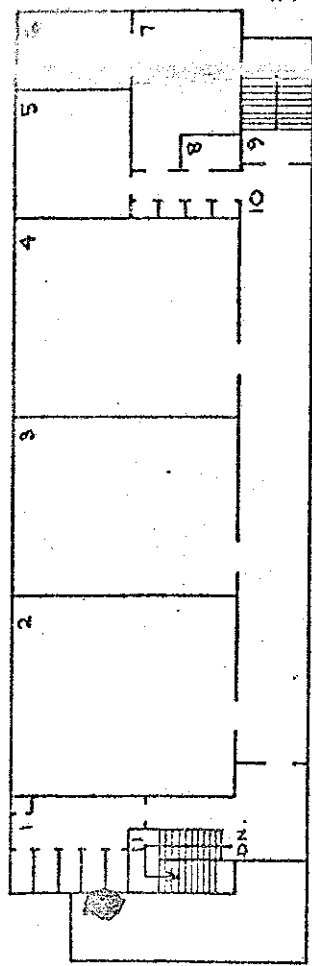
BLOCK A EXTERIOR (CONTD)	25.11.81	31.3.83	31.3.84	31.3.85	31.3.86	31.3.87
<u>East Area</u> Make good damaged weatherboards		x				
<u>Interior</u> <u>Area 1</u> Repair entrance door to girls toilets Replace rubber inserts to stops in cubicle doors Secure wash hand basin to wall Provide door stop to entrance door Provide two door stops to double doors opening to Area 10		x x x x x				
<u>Area 2</u> Secure panel heaters to walls Refix ceiling apex mould		x x				
<u>Area 3</u> Secure panel heaters to walls Provide stop to entrance door		x x				
<u>Area 4</u> Provide stop to entrance door		x				
<u>Area 5</u> Secure panel heaters to walls Provide stop to entrance		x x				
<u>Area 6</u> Remove sliding door tracks and make good, suitable to use as open shelving		x				
<u>Area 7</u> Ease and adjust double doors and provide stops to		x				
<u>Area 7</u> Retension carpet		x				
Provide adequate size display board suitably framed and fixed to wall		x				
Ease and adjust doors		x				
Refix stop chain to sink bench flap		x				
<u>Area 8</u> Adjust ventilating louvre to ceiling		x				

JW

	25.11.81	31.3.83	31.3.84	31.3.85	31.3.86	31.3.87
BLOCK A INTERIOR (CONTD)						
Area 10		x				
Ease and adjust all storage cupboard doors		x				
Repair damaged door		x				
Provide stops to doors at each end of corridor						
Area 12						
Secure furniture to entrance door with longer screws						
Area 14		x				
Ease and adjust entrance door						
Ease and adjust cubicle door		x				
Area 15						
Secure and fix washhand basin to wall		x				
Provide formica splash back to wall behind WH basin		x				
Make good to beading securing glass forming borrowed light from area 16						
Area 16		x				
Repair wallpaper (torn)						
Area 17		x				
Provide stop to RH door		x				
Adjust keeper plate to door head		x				
Areas 18, 19, 20						
Secure panel heaters		x				
Area 21						
Adjust all windows		x				
Provide stops to stairway doors		x				
Area 22						
Replace skirting to walls						
Area 28		x				
Replace stop to entrance door						
Repair water system to urinal		x				
Clean and repair vinyl floor covering		x				
Area 26						
Replace towel rail						
Replace rubber inserts to door stops		x				
Repair damaged cubicle door		x				
Change hinged sash to fixed louvres		x				

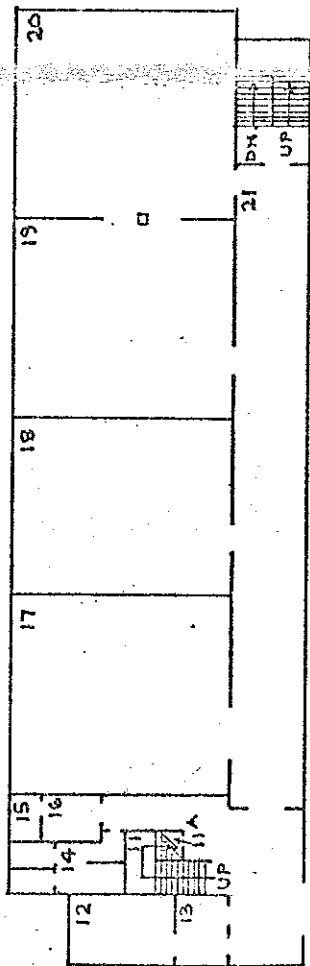
BLOCK A (CONTINUED)	25.11.81	31.3.83	31.3.84	31.3.85	31.3.86	31.3.87
<u>Structural</u> Strengthen to MWD standards  <u>Electrical</u> Provide separate metering for integrating and non-integrating areas Provide time switch control to all heating circuits Fit diffusers to fluorescent lights in area 2, 3, 4, 17, 18, 19 and 20		x x x	x			
<u>Fire Protection</u> <u>Egress</u> Provide secondary means of egress from all classrooms to meet the School Fire Code Section 2.3.8 Provide a lock that can be opened from the inside and without the use of keys to area 25 Install a fire break in the roof void on the partition wall between areas 3 and 4 to Ministry of Works and Development standards Provide a lining of 9mm gibraltar board to the rear wall of basement, sports and caretakers store Provide an emergency lighting system for area 22 to conform with section 2.4.4 of the School Fire Code	x x x					
<u>Building Requirements</u> Provide the following facilities by remodelling or new construction:  Principals office 11m <sup>2</sup> School office 8m <sup>2</sup> Casualty/sickroom 9m <sup>2</sup> Storage 26m <sup>2</sup> Sanitary towel disposal for female staff toilet 2 WC pans, 1 washbasin for girls toilets Sanitary towel disposal for girls toilets 2 drinking fountains		x x x	x x			





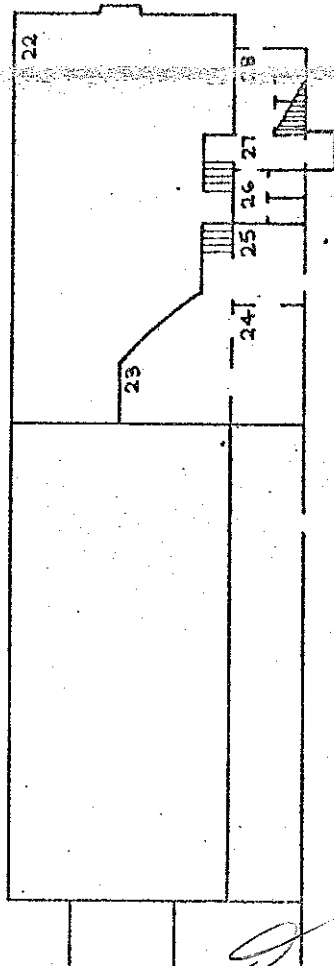
BLOCK A FIRST FLOOR		
ROOM	AREA	ROOM
1 GIRLS' TOILETS	58.33m <sup>2</sup>	7 STAFFROOM
2 CLASSROOM	54.74m <sup>2</sup>	8 STAFF TOILET
3 CLASSROOM	61.92m <sup>2</sup>	9 STAIRS
4 CLASSROOM	20.16m <sup>2</sup>	10 CORRIDOR
5 RESOURCE		11 STAIRS
6 TEACHERS WORKROOM	10.92m <sup>2</sup>	

TOTAL AREA = 405.62m<sup>2</sup>



BLOCK A GROUND FLOOR		
ROOM	AREA	ROOM
11A STORE	2.00m <sup>2</sup>	17 LIBRARY
12 PRINCIPAL OFFICE	8.64m <sup>2</sup>	18 CLASSROOM
13 GENERAL OFFICE	4.80m <sup>2</sup>	19 CLASSROOM
14 BOYS' TOILETS		20 CLASSROOM
15 STAFF TOILET		21 CORRIDOR
16 SICK ROOM	3.45m <sup>2</sup>	

TOTAL AREA = 405.62m<sup>2</sup>



BLOCK A LOWER GROUND FLOOR		
ROOM	AREA	
22 ASSEMBLY HALL	136m <sup>2</sup>	
23 STAGE	10.37m <sup>2</sup>	
24 KITCHEN		
25 SERVICE LOBBY		
26 GIRLS' TOILETS		
27 ENTRANCE LOBBY		
28 BOYS' TOILETS		

TOTAL AREA = 408.38m<sup>2</sup>

DEPARTMENT OF EDUCATION  
 buildings division: integration of private schools  
 School: SACRED HEART SCHOOL, THORNDON

Drawing No:	EIP 156 02	Scale:	1:300
Date:	25 JUNE 1980		
Revision		SHEET 2 OF 2 SHEETS	
		Drawn:	22/8

# Schedule of staff appointments to Sacred Heart School, Guilford Terrace, WELLINGTON

under Sections 65(1) & 66 of the Private Schools Conditional Integration Act 1975 being special positions relating to the Special Character of the School

Column 1	Column 2	Column 3	Column 4	Column 5	Column 6
Total Staff Entitlement of School	Principal to be Appointed under S.65 (1) (a) Private Schools Conditional Integration Act 1975	Director of Religious Studies to be Appointed under S.65 (1) (b) Private Schools Conditional Integration Act 1975 Scale A or B or Higher	Senior Teacher Junior Classes to be Appointed under S.35 (1) (d) Private Schools Conditional Integration Act 1975	Religious Instruction Positions of Importance	Deputy Principal to be Appointed under S.66 Private Schools Conditional Integration Act 1975 Number of Staff to be so Appointed
	Number of Staff to be so Appointed			to be Appointed under S.65 (1) (c) of Private Schools Conditional Integration Act 1975	
				Number of Staff to be so Appointed (See Footnote No. 2 to this Schedule)	

Column 1	Column 2	Column 3	Column 4	Column 5	Column 6
1	1	-	-	1	-
2	1	-	-	1	-
3	1	-	-	1	-
4	1	-	-	2	-
5	1	1	1	1	1
6	1	1	1	2	1
7	1	1	1	2	1
8	1	1	1	1	1
9	1	1	1	2	1
10	1	1	1	3	1
11	1	1	1	3	1
12	1	1	1	4	1
13	1	1	1	4	1
14	1	1	1	5	1
15	1	1	1	6	1
16	1	1	1	7	1
17	1	1	1	7	1
18	1	1	1	8	1
19	1	1	1	8	1
20	1	1	1	9	1
21	1	1	1	9	1
22	1	1	1	9	1
23	1	1	1	10	1
24	1	1	1	10	1
25	1	1	1	11	1
26	1	1	1	11	1
27	1	1	1	12	1
28	1	1	1	12	1
29	1	1	1	12	1
30	1	1	1	13	1

## NOTES:

- The above Schedule has been prepared for use when the staffing entitlement of the School alters at any time during the currency of this Deed of Agreement to enable the parties hereto by reference to the total staffing entitlement of the School in Column (1), hereof to determine the number of teaching positions at the School which in terms of Section 65 (1) (a), (b), (c) and (d) of the Private Schools Conditional Integration Act 1975 and Clauses 14, 15, 17 and 18 of this Deed carry a responsibility for Religious Instruction and require a willingness and ability to take part in Religious Instruction or in terms of Section 66 of the Private Schools Conditional Integration Act 1975 require a particular capability in the teacher as described in Clause 19 of the Deed of Agreement. The Schedule to be read across from left to right.
- Column (5). Section 65 (1) (c) must apply to the number of other positions indicated in the Column and may be made up of teachers appointed under the Initial Appointments Scheme and of other permanent appointments. It is recommended that where the School has a total staffing entitlement of up to eleven there should be at least one appointed as a Permanent Scale A Teacher and in schools with a total staffing entitlement of between twelve and fifteen there should be two appointed as Permanent Scale A Teachers and in schools with a total staffing entitlement of between fifteen and twenty-one there should be at least three appointed as Permanent Scale A Teachers.

3. The School as at the effective date hereof has a staffing entitlement of 31 (6) teachers