

THIS DEED OF AGREEMENT is made the 29 day of MARCH
One thousand nine hundred and eighty-two (1982)

BETWEEN THE ROMAN CATHOLIC ARCHBISHOP OF THE ARCHDIOCESE
OF WELLINGTON a "Corporation Sole" (hereinafter with his
successors referred to as "the Proprietor") of the first
part

AND HER MAJESTY THE QUEEN acting by and through the
Minister of Education (hereinafter referred to as "the
Minister") of the second part

WHEREAS

A The Proprietor is the owner of Sacred Heart School,
REEFTON (hereinafter referred to as "the
School").

B The school is a Roman Catholic Primary School for boys
and girls from new entrants to Form Two offering Educa-
tion with a Special Character.

C The Minister and the Proprietor have agreed to enter
into this Deed of Agreement pursuant to the Private
Schools Conditional Integration Act 1975, whereby the
School is to be established as an integrated school.

NOW THIS DEED OF AGREEMENT WITNESSETH THAT IT IS HEREBY
COVENANTED AGREED AND DECLARED BY AND BETWEEN THE PARTIES
HERETO AS FOLLOWS:

1. THAT the Minister and the Proprietor HEREBY AGREE that
the School is to become an integrated School pursuant to the
Private Schools Conditional Integration Act 1975.

JSW

[Signature]

2. THE School's Special Character as is hereinafter described, shall incorporate the Education with a Special Character as provided in the School AND IT IS HEREBY AGREED AND DECLARED that the School shall at all times in the future be conducted and operated so as to maintain and preserve the School's Special Character and these presents shall be interpreted so as to maintain and preserve the Special Character of the School.

3. ON behalf of the Proprietor it is hereby agreed that:

(a) The Proprietor is the owner of all the land and improvements more particularly described in the First Schedule hereto (hereinafter referred to as "the Proprietor's land") and of which for the purposes of this Deed of Agreement, the School premises form part only. The School premises for the purposes of this Deed of Agreement being the land and improvements more particularly described in the Second Schedule hereto (hereinafter referred to as "the School premises").

(b) The Proprietor shall set apart and appropriate as owner all the School premises and all the chattels and other assets of the Proprietor associated with the School exclusively for the purposes of the School as an integrated School, so that the Controlling Authority of the School shall have the exclusive right to the possession and use of the School premises and chattels

- PROVIDED THAT -

205

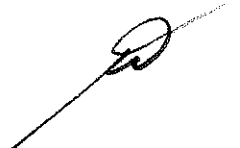


- (i) At the request of the Proprietor, the School Committee may grant the use of the School premises and chattels to the Proprietor or other person or persons at any time when the School premises and chattels are not required for school purposes and the School Committee shall not unreasonably or arbitrarily withhold its consent. The School Committee may require the Proprietor or other person or persons to pay a reasonable fee to the School Committee as a condition of such use.
- (ii) With the consent of the Proprietor, the School Committee may grant the use of the School premises and chattels to other person or persons at any time when the School premises and chattels are not required for School purposes and the Proprietor shall not unreasonably or arbitrarily withhold his consent. The School Committee may require any such person or persons to pay a reasonable fee to the School Committee as a condition of such use.
- (c) The Proprietor shall accept and meet the liability for all mortgages, liens and other charges upon the land and buildings comprising the School premises.
- (d) The Proprietor shall plan, pay for, and execute the improvements described in the Third Schedule hereto, to the School premises so as to bring the School buildings and associated facilities forming
- 20*

part of the School premises up to the minimum standard for comparable State Schools prevailing at the effective date of this Deed of Agreement. Such improvements to be carried out in accordance with the dates specified against such improvements in the Third Schedule hereto. The Proprietor shall upon completion of any improvements to electrical services described in the Third Schedule hereto arrange for the local Electrical Supply Authority to inspect the School premises in terms of Regulation 45 of the Electrical Supply Regulations 1976.

- (e) The Proprietor shall plan, execute and pay for such capital works and associated facilities at the School as may be approved or required, from time to time, by the Minister pursuant to Section 40 (2) (d) of the Private Schools Conditional Integration Act 1975.
- (f) The Proprietor may own or hold upon trust, and control and maintain, any land, buildings and associated facilities that, although not part of the integrated School premises in terms of this Deed of Agreement are regarded by the Proprietor as appropriate to maintain the Special Character of the School.
- (g) The Proprietor shall insure all the buildings forming part of the School premises and the Proprietor's chattels (if any) owned or held upon trust for the purposes of the School and the other assets owned by the Proprietor for the purposes of the School against risks

205




normally insured against, in some responsible insurance office in New Zealand, and further acknowledges the obligation on him created by Section 40 (2) (h) of the Private Schools Conditional Integration Act 1975.

- (h) No person employed at the School and paid for his services in whole or in part out of moneys appropriated by Parliament, shall be paid by the Proprietor or his servants or agents any remuneration additional to that provided for by the Private Schools Conditional Integration Act 1975 or shall be granted or permitted any condition of service more favourable than that permitted in the case of a person employed in a comparable position in a State School PROVIDED HOWEVER that a teacher to whom the provisions of Section 71 of the Private Schools Conditional Integration Act 1975 apply, shall continue to be paid no less than the same salary, and be accorded the same status, as he received or was accorded on the day before the effective date of the integration of the School.

4. THE land and buildings constituting the School premises are subject to the mortgages, debts, liens, encumbrances, easements, licences, restrictions and other matters which affect the title to or enjoyment of the land and have the appurtenances or benefits attaching to the land more particularly described in the First Schedule hereto.

John



5. THE Special Character of the School is that it is a Roman Catholic School for boys and girls established by the Roman Catholic Archbishop of the Archdiocese of Wellington, New Zealand, for the Roman Catholic community of the Archdiocese of Wellington which promotes and supports the School and of which the School is part, to provide and to continue to provide Education with a Special Character, that is to say :

The School is a Roman Catholic School in which the whole School community through the general School programme and in its Religious instructions and observances, exercises the right to live and teach the values of Jesus Christ. These values are as expressed in the Scriptures and in the practices, worship and doctrine of the Roman Catholic Church, as determined from time to time by the Roman Catholic Archbishop of the Archdiocese of Wellington.

6. THE Proprietor of the School subject to the provisions of this Deed of Agreement :

- (a) Shall continue to have the responsibility to supervise the maintenance and preservation of the Education with a Special Character provided by the School;
- (b) Shall continue to have the right to determine from time to time what is necessary to preserve and safeguard the Special Character of the Education provided by the School and described in this Deed of Agreement;

JWS



- (c) May invoke the powers conferred upon him by the Private Schools Conditional Act 1975, if in the opinion of the Proprietor the Special Character of the School as defined and described in this Deed of Agreement has been or is likely to be jeopardised or the Education with a Special Character as defined and described in this Deed of Agreement is no longer preserved and safeguarded.

7. (a) THE Controlling Authority of the School shall be the Education Board of the Nelson Education District as constituted pursuant to Section 15 of the Education Act 1964.

- (b) The School shall be managed by a School Committee constituted pursuant to the provisions of Section 26 of the Private Schools Conditional Integration Act 1975. The School Committee shall consist of :

(i) One (1) member to be appointed by the Proprietor of the School;

(ii) Four (4) members to be elected by the parents of children attending the School PROVIDED HOWEVER that in the event of the School roll altering at any time then the number of such members shall be fixed by ascertaining the number of members that a State School Committee would have, based on the current School roll in accordance with the provi-

JW



sions of the School Committees Administration Regulations 1965 and subtracting one from that number.

- (c) Any election conducted pursuant to Section 26 of the Private Schools Conditional Integration Act 1975 shall be conducted as nearly as possible in the manner prescribed by the School Committees Administration Regulations 1965 and any regulations made in amendment thereof or in substitution therefor and the provisions of those regulations shall, with any necessary modifications, be applied accordingly.
- (d) The control and management of the School shall be exercised subject to the provisions of Section 25 (6) of the Private Schools Conditional Integration Act 1975.

8. THE School had a roll of fifty (50) pupils as at the 30th September 1981 being the year when the roll figures were last compiled. It is agreed by and between the parties hereto that the maximum roll of the School shall be forty-eight (48) pupils.

9. THE Proprietor agrees that pursuant to Paragraphs (d) and (e) of Clause 3 of this Deed of Agreement he will bring the School up to the minimum standard of accommodation laid down from time to time by the Director-General for a comparable State School.

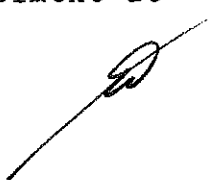
JW



10. (a) PREFERENCE of enrolment at the School under Section 29 (1) of the Private Schools Conditional Integration Act 1975 shall be given only to those children whose parents have established a particular or general religious connection with the Special Character of the School and the Controlling Authority shall not give preference of enrolment to the parents of any child unless the Proprietor has stated that those parents have established such a particular or general religious connection with the Special Character of the School.

(b) In accordance with Section 7 (6) (h) of the Private Schools Conditional Integration Act 1975, unless the Proprietor and the Controlling Authority otherwise agree and subject to places being available, the number of pupils whose parents do not have a preference of enrolment at the School in accordance with the provisions of Section 29 (1) of the Private Schools Conditional Integration Act 1975 shall be limited at all times to three (3) pupils out of the total roll of the School and the Controlling Authority shall not enrol more than that number PROVIDED THAT to maintain and preserve the Special Character of the School the Controlling Authority in classifying such pupils so enrolled shall endeavour to reasonably distribute them through the range of classes offered by the School.

20 (c) Wherever any difficulty arises related to enrolment at



the School in terms of Section 54 of the Private Schools Conditional Integration Act 1975, it may be referred to the Controlling Authority of the School pursuant to the provisions of the said section.

11. IT is agreed by and between the parties hereto that as Religious observances and Religious instruction form part of the Education with a Special Character provided by the School, Religious observances and Religious instruction in accordance with the determination made from time to time by the Roman Catholic Archbishop of the Archdiocese of Wellington shall continue to form part of the School programme in accordance with Sections 31 and 32 of the Private Schools Conditional Integration Act 1975.

12. THE Proprietor, together with his servants, agents and licensees shall, subject to the proviso to Section 40 (2) (i) of the Private Schools Conditional Integration Act 1975, have at all reasonable times access to the School to ensure that the Special Character of the School is being maintained.

13. THE Proprietor, together with his servants, agents and licensees, shall have at all reasonable times access to the land and buildings of the School constituting the School premises sufficient to enable him to exercise the powers and carry out the responsibilities vested in him and imposed on him by the Private Schools Conditional Integration Act 1975 and by this Deed of Agreement.

[Handwritten initials "JW" in the bottom left corner and a signature in the bottom right corner.]

14. AN advertisement for the position of Principal of the School shall in accordance with Section 65 (1) (a) of the Private Schools Conditional Integration Act 1975 state that a willingness and ability to take part in Religious instruction appropriate to the Special Character of the School shall be a condition of appointment. Any person so appointed to the position of Principal shall accept these requirements as a condition of appointment. The Principal so appointed shall accept and recognise a responsibility to maintain and preserve the Special Character of the School.

15. THERE shall be one (1) other teaching position at the School which in accordance with Section 65 (1) (c) of the Private Schools Conditional Integration Act 1975, shall be a position of importance carrying a responsibility for Religious instruction and an advertisement for the position shall state that a willingness and ability to take part in Religious instruction appropriate to the Special Character of the School shall be a condition of appointment. Any person so appointed to this position shall accept these requirements as a condition of appointment PROVIDED HOWEVER that in the event of the staffing entitlement of the School altering at any time during the currency of this Deed of Agreement then the number of teaching positions designated under Section 65 (1) (c) of the Private Schools Conditional Integration Act 1975 as positions of importance carrying a responsibility for Religious instruction shall be determined in accordance with the then current staffing entitlement of the School under the Education Act 1964 and Regulations made thereunder and as is more particularly described in the Fourth Schedule hereto.

JW



16. THE Proprietor may with the consent of the Controlling Authority in accordance with Section 69 (1) of the Private Schools Conditional Integration Act 1975 arrange for any retired teacher to undertake voluntary tasks to assist in the School with the teaching of Religious observances and Religious instruction appropriate to the Special Character of the School.

17 IT is agreed by and between the parties hereto that as Religious observances and Religious instruction form part of the Education with a Special Character provided by the School the Proprietor may employ any person as a Chaplain or otherwise, for the purposes of Religious observances or instruction and the provisions of Section 69 (2) and (3) of the Private Schools Conditional Integration Act 1975 shall apply.

18. THE Proprietor of the School shall have the right to enter into an Agreement with the parents or other persons accepting responsibility for the education of a child providing that, as a condition of enrolment and attendance of that child at the School, the parents or other persons shall pay attendance dues established in respect of the School or group of Integrated Schools owned by the Proprietor or Proprietors of other Roman Catholic integrated Schools at such rates and subject to such conditions as may be approved from time to time by the Minister, by notice in the New Zealand Gazette in accordance with Section 36 of the Private Schools Conditional Integration Act 1975.



205



19. THE School is a Primary School for boys and girls from new entrants to form two and shall remain so until such time as an agreement to a change in this organisation of the School is reached between the Proprietor and the Minister and the parties hereto enter into a supplementary Deed of Agreement to give effect thereto.

20. WHERE any of the costs associated with the conduct of the Proprietor's land and buildings that are not part of the School premises cannot be separated from the costs associated with the operation of the School premises, the Proprietor and the School Committee and/or the Controlling Authority shall contribute to such costs according to their respective use of the services and facilities.

21. IT is acknowledged by and between the parties hereto pursuant to Clause 20 hereof that certain of the services and facilities on or serving the Proprietor's land and buildings are used in common for the purpose of the School premises and as is more particularly delineated on the plan forming part of the Second Schedule hereto. In particular, the water supply and the sewerage and drainage systems are all used in common and the costs of maintaining such services and facilities shall be apportioned as provided in Clause 20 hereof. Where such services or facilities are wholly or partly situated outside the School premises the Proprietor will continue to make such services or facilities available to the School premises.



22. THE Proprietor has entered into a sale and purchase agreement with the Crown for the purchase by the Proprietor of that piece of land being formerly a closed road and being 62m² more particularly delineated in yellow on the annexed plan forming part of the Second Schedule hereto and it is hereby agreed and declared by the parties hereto that the said piece of land shall be part of the School premises on completion of the transfer.

23. ON and after the effective date of integration the School has become part of the State system as provided by Section 4 of the Private Schools Conditional Integration Act 1975. It is therefore acknowledged that if the integrated school at the date of integration has a pupil/teacher ratio in excess of the State pupil/teacher ratio a teaching position shall be disestablished when a teacher appointed to that position in accordance with Section 71 of the Private Schools Conditional Integration Act 1975 leaves that position PROVIDED HOWEVER that a position may not be disestablished where, in the opinion of the local District Senior Inspector of Primary Schools, it is necessary to fill that position in order to provide tuition to those classes for primary school pupils which a school is required to provide in accordance with the Organisation and Inspection of State Primary Schools Regulations 1963.

24. THE Proprietor shall not engage any teachers between the date of execution of this Deed of Agreement and the effective date of integration other than those whose names have already been notified by the Proprietor to the Director-General of Education without first obtaining the consent of the Director-General.

21/5



25. THE Proprietor shall reimburse the Minister for the payment of salary, wages and the proportion of School holiday pay due and paid by the Minister in respect of the 1982 School year to any person employed at the School up to the effective date of integration. PROVIDED THAT the Proprietor shall not be required to reimburse the Minister in respect of any salary, wages and holiday pay which has been paid to teachers up to the date of integration by the Minister in accordance with the terms of the Minister's letter of 4 December 1980 to Archbishop Williams.

26. THE Minister shall subject to Clause 3(d) and (e) of this Deed of Agreement after the effective date hereof maintain the School premises and the associated facilities in a state of repair order and condition as for a comparable State school under the same Controlling Authority and provide for the maintenance of the chattels as though the School were a State School. The School shall be entitled to such furniture and equipment as the Controlling Authority supplies from time to time to comparable State Schools.

27. THE effective date of this Deed of Agreement shall be the 31st day of March, 1982.

28. ON and after the effective date specified in this Deed of Agreement the School shall be an integrated school in terms of the Private Schools Conditional Integration Act 1975.

IN WITNESS WHEREOF these presents have been executed the day and year first hereinbefore written.

20/5



SIGNED by THOMAS STAFFORD WILLIAMS
THE ROMAN CATHOLIC ARCHBISHOP OF
THE ARCHDIOCESE OF WELLINGTON and
Sealed with his Seal of Office in
the presence of:

+ Thomas S. Williams

Robert
Clerk
Exchequer Hall
Wellington

SIGNED FOR AND ON BEHALF OF
HER MAJESTY THE QUEEN by MERVYN LANGLOIS
WELLINGTON Minister of Education in the
presence of:

Mervyn Langlois

M. J. Fokker
12 Hohiria Road
Hataitai
Wellington, 3.
(Private Secretary)

FIRST SCHEDULE

Description of total land buildings and other improvements comprising the Proprietor's land of which the School premises form part.

THE PROPRIETOR'S LAND

All that land, hall, School buildings and other improvements owned by the Roman Catholic Archbishop of the Archdiocese of Wellington situate at Walsh Street, Reefton, New Zealand being known as Sacred Heart School, Reefton and being more particularly described as follows:

- FIRSTLY All that freehold parcel of land containing 1012m² more or less situated in Block XIV Reefton Survey District being Sections 481, 482, 483 and part Section 484 Town of Reefton and being all the land in Certificate of Title Volume 2B Folio 66 (Nelson Registry)
- SECONDLY All that freehold parcel of land containing 607m² more or less situated in Block XIV Reefton Survey District being Sections 466 and 467 Town of Reefton and being all the land in Certificate of Title Volume 2B Folio 65 (Nelson Registry)
- THIRDLY All that freehold parcel of land containing 304m² more or less situated in Block XIV Reefton Survey District being Section 468 Town of Reefton and being all the land in Certificate of Title Volume 2D Folio 453 (Nelson Registry)
- FOURTHLY All that freehold parcel of land containing 304m² more or less situated in Block XIV Reefton Survey District being Section 469 Town of Reefton and being all the land in Certificate of Title Volume 2D Folio 319 (Nelson Registry)
- FIFTHLY All that freehold parcel of land containing 304m² more or less situated in Block XIV Reefton Survey District being Section 470 Town of Reefton and being all the land in Certificate of Title Volume 2D Folio 243 (Nelson Registry)
- SIXTHLY All that freehold parcel of land containing 607m² more or less situated in Block XIV Reefton Survey District being Sections 454 and 455 Town of Reefton and being all the land in Certificate of Title Volume 2B Folio 67 (Nelson Registry)

pw



- SEVENTHLY All that freehold parcel of land containing 2023m² more or less situated in the Town of Reefton being part of Section 484 and being Sections 485, 486, 487, 488, 489, 490 on the plan of the said Town and being all the land in Certificate of Title Volume 4 Folio 40 (Nelson Registry)
- EIGHTHLY All that freehold parcel of land containing 1973m² more or less situated in the Twon of Reefton and being Section 1331 on the plan of the said Town deposited in the office of the Chief Surveyor at Nelson and being all the land in Certificate of Title Volume 19 Folio 264 (Nelson Registry)
- NINTHLY All that freehold parcel of land containing 911m² more or less situated in Block XIV Reefton Survey District being Sections 463, 464, and 465 Town of Reefton and being all the land in Certificate of Title Volume 2D Folio 287 (Nelson Registry)
- TENTHLY All that freehold parcel of land containing 607m² more or less situated in Block XIV Reefton Survey District being Sections 461 and 462 Town of Reefton and being all that land in Certificate of Title Volume 2D Folio 441 (Nelson Registry)
- ELEVENTHLY All that freehold parcel of land containing 62m² more or less. This parcel of land is at present being transferred to the Roman Catholic Archbishop of Wellington (see Clause 22).

There is a debt owing to the:

- (a) Archdiocesan Development Fund of the Archdiocese of Wellington.
- (b) Bank of New Zealand.

201



SECOND SCHEDULE

Description of land buildings and other improvements comprising the School Premises.

THE SCHOOL PREMISES

All that part of the Proprietor's land as described in the First Schedule hereto, delineated in red on the annexed plan of the Proprietor's land, which plan forms part of this Schedule TOGETHER WITH all the School buildings and other improvements thereon SAVE AND EXCEPT Block C and the land immediately surrounding the same being more particularly delineated in blue on the annexed plan TOGETHER WITH a reservation in favour of the Proprietor's land not forming part of the School premises of full-rights of access and of ingress and egress to and from those excepted portions from and to Church Street, Reefton.

22

SACRED HEART SCHOOL, REEFTON

THIRD SCHEDULE

WORKS TO BE CARRIED OUT BY THE PROPRIETOR IN RELATION
TO THE INTEGRATED SCHOOL

These works are to be planned, executed and paid for by the Proprietor subject to the provisions of this schedule in relation to the buildings and associated facilities to bring them up to the minimum standard for a comparable state school.

In those cases where the words "half cost to be met by education board" appear in relation to particular works, the buildings supervisor of the Nelson Education Board shall draw up the specifications for such particular works and the proprietor shall obtain his approval to the contractor and to the price before commencing such works. All work is to be carried out by competent tradesmen or in a workmanlike manner to the Nelson Education Board standards.

AGREED PHASING OF WORK TO BE COMPLETED BY

	31.3.82	31.3.83	31.3.84	31.3.85	31.3.86	31.3.87	20-
<u>SITE</u>							
<u>Church Street Entrance</u>							
Replace gates with chain barriers			x				
Restore netting to fence			x				
Upgrade sealed area			x				
<u>Walsh Street Entrance and Yard</u>							
Restore netting to fence							
Connect a drain from court channel at west end to road		x					
Fill depressions in seal in front of classrooms		x					
<u>Incinerator</u>							
Rebuild incinerator		x					
<u>Fencing</u>							
Provide fencing at northeast corner of site, extending 30m south along Bridge Street boundary (post and wire)						x	

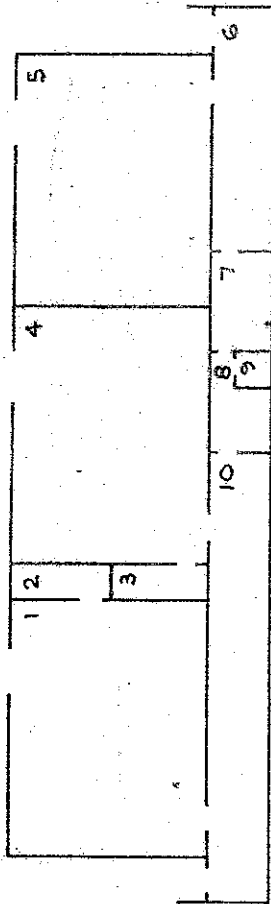
218

	31.3.82	31.3.83	31.3.84	31.3.85	31.3.86	31.3.87
<u>SITE (continued)</u>						
<u>Fencing (continued)</u>						
Provide fencing 20m along Walsh Street boundary to west of school blocks (1m high pipe and netting)						
<u>BLOCK A</u>						
<u>Exterior</u>						
Repaint (half cost to be met by education board)						
Seal blockwork with 2 coats of silicone seal						
Fit cabin hooks to all exterior opening doors		x		x		
Fit protectors to bottom 1.8m of downpipe such as 75mm diameter wrought iron		x				
<u>Interior</u>						
<u>Areas 1, 2, 3, 4, 5, 6, 7, 8 and 10</u>						
Sand floors and apply 3 coats of polyurethane varnish						
Repaint and revarnish				x		
<u>Area 6</u>						
Repair louvre levers						
Adjust door clearance on exterior door		x				
Rehang cupboard doors and adjust		x				
Secure tap at basin		x				
<u>Area 9</u>						
Repair flush pipe leak		x				
<u>Area 10</u>						
Secure basin		x				
Repair open lockers		x				
Adjust cupboard doors		x				
Repair door to Area 1 and provide kickplate		x				
Replace beaching, floor to wall		x				
Secure end of cupboard		x				
<u>Electrical</u>						
Replace outside light fitting at east end porch						
Upgrade lighting in Areas 1, 4 and 5 to state school standards		x				
Upgrade heating in Areas 1, 4 and 5 to state school standards		x				

2015

31.3.82	31.3.83	31.3.84	31.3.85	31.3.86	31.3.87
BLOCK A (continued)					
<u>Electrical (continued)</u>					
Permanently wire infra red wall mounted heater in Area 7					
	x				
Provide two additional wall socket outlets in each of Areas 1, 4, 5					
	x				
Protect the surface cable to the plug point in Area 3					
	x				
<u>Fire Protection</u>					
Replace deadlocks on external doors from Areas 1, 4, 5, 6 and 10 with locks that can be opened from the inside without the use of keys					
Service 10 litre water CO2 extinguishers in Areas 1, 4 and 5 and provide marker plates					
	x				
BLOCK B					
<u>Exterior</u>					
Secure waste pipe					
	x				
Clear stormwater drain					
	x				
Replace downpipe					
	x				
Repaint (half cost to be met by Education Board)					
Seal blockwork with 2 coats of silicone seal					
Reinstate drinking fountains					
	x				
<u>Interior</u>					
Area 11					
Repaint					
Replace wooden toilet seat					
	x				
Refix back vents					
	x				
Replace toilet paper holder					
	x				
Area 12					
Secure supply pipe to tap at basin					
	x				
Replace wooden toilet seat					
	x				
Secure loose ceiling					
	x				
Reinstate exterior door hardware					
	x				
Repair leaks to flush pipe to wc pan 3					
	x				
Repaint					

	31.3.82	31.3.83	31.3.84	31.3.85	31.3.86	31.3.87
<p>STRUCTURAL GENERAL</p> <p>Confirm presence of reinforcing in masonry walls of Blocks A, B and D to MWD standards.</p> <p>BUILDING REQUIREMENTS</p> <p>Provide the following by remodelling: Bookroom of 10m² Storage of 14m² One sanitary towel disposal unit for the female staff toilet One sanitary towel disposal unit in the girls toilets One further staff toilet containing 1 wc and 1 whb</p> <p>FURNITURE AND EQUIPMENT</p> <p>Repair and replace classroom furniture as required by Nelson Education Board</p>	x		x x			



BLOCK A		
ROOM		AREA
1	CLASSROOM	71.35 m ²
2	STORE	4.46 m ²
3	STORE	4.46 m ²
4	CLASSROOM	71.35 m ²
5	CLASSROOM	71.35 m ²
6	CORRIDOR	
7	STAFFROOM	8.47 m ²
8	SICK BAY	5.95 m ²
9	STAFF TOILET	
10	CORRIDOR	

TOTAL AREA = 333.9 m²



BLOCK B
 11 BOYS TOILETS
 12 GIRLS TOILETS
 TOTAL AREA = 28.1 m²

DEPARTMENT OF EDUCATION
 buildings division: integration of private schools
 School: SACRED HEART SCHOOL, REEFTON

Drawing No:	Scale:
EIP 164 02	1 : 300
Date:	SHEET 2 OF 2 SHEETS
21 JULY 1980	Drawn: <i>WES</i>
Revision	

Schedule of staff appointments to Sacred Heart School, Reefton under Sections 65(1) & 66 of the Private Schools Conditional Integration Act 1975 being special positions relating to the Special Character of the School

Total Staff Entitlement of School	Principal to be Appointed under S.65 (1) (a) Private Schools Conditional Integration Act 1975	Number of Staff to be so Appointed	Director of Religious Studies to be Appointed under S.65 (1) (b) Private Schools Conditional Integration Act 1975 Scale A or B1 or Higher	Senior Teacher Junior Classes to be Appointed under S.65 (1) (c) Private Schools Condi- tional Integration Act 1975	Number of Staff to be so Appointed	Religious Instruction Positions of Importance Number of other teachers to be Appointed under S.65 (1) (c) of Private Schools Conditional Integration Act 1975	Number of Staff to be so Appointed (See Footnote No. 2 to this Schedule)	Deputy Principal to be Appointed under S.66 Private Schools Conditional Integration Act 1975 Number of Staff to be so Appointed

Column 1	Column 2	Column 3	Column 4	Column 5	Column 6
1	1	-	-	-	-
2	1	-	-	1	-
3	1	-	-	1	-
4	1	-	-	2	-
5	1	1	-	1	-
6	1	1	-	2	-
7	1	1	-	1	-
8	1	1	1	1	1
9	1	1	1	2	1
10	1	1	1	2	1
11	1	1	1	3	1
12	1	1	1	3	1
13	1	1	1	4	1
14	1	1	1	4	1
15	1	1	1	5	1
16	1	1	1	6	1
17	1	1	1	7	1
18	1	1	1	7	1
19	1	1	1	8	1
20	1	1	1	8	1
21	1	1	1	9	1
22	1	1	1	9	1
23	1	1	1	9	1
24	1	1	1	10	1
25	1	1	1	10	1
26	1	1	1	11	1
27	1	1	1	11	1
28	1	1	1	12	1
29	1	1	1	12	1
30	1	1	1	13	1

NOTES:

1. The above Schedule has been prepared for use when the staffing entitlement of the School alters at any time during the currency of this Deed of Agreement to enable the parties hereto by reference to the total staffing entitlement of the School in Column (1) hereof to determine the number of teaching positions at the School which in terms of Section 65 (1) (a), (b), (c) and (d) of the Private Schools Conditional Integration Act 1975 and Clauses 14, 15, 17 and 18 of this Deed carry a responsibility for Religious Instruction and require a willingness and ability to take part in Religious Instruction or in terms of Section 66 of the Private Schools Conditional Integration Act 1975 require a particular capability in the teacher as described in Clause 19 of the Deed of Agreement. The Schedule to be read across from left to right.

2. Column (5). Section 65 (1) (c) must apply to the number of other positions indicated in the Column and may be made up of teachers appointed under the Initial Appointments Scheme and or other permanent appointments. It is recommended that where the School has a total staffing entitlement of up to eleven there should be at least one appointed as a permanent Scale A Teacher and in schools with a total staffing entitlement of between twelve and fifteen there should be two appointed as permanent Scale A Teachers and in schools with a total staffing entitlement of between fifteen and twenty-two there should be at least three appointed as permanent Scale A Teachers.

3. The School as at the effective date hereof has a staffing entitlement of Two (2) teachers.