

THIS DEED OF AGREEMENT is made the 27 day of August
One thousand nine hundred and eighty one (1981)
BETWEEN THE ROMAN CATHOLIC BISHOP OF THE DIOCESE OF
AUCKLAND a "Corporation Sole" (hereinafter
with his successors referred to as "the Proprietor")
of the first part
and HER MAJESTY THE QUEEN acting by and through the
Minister of Education (hereinafter referred to as
"the Minister") of the second part

WHEREAS

- A The Proprietor is the owner of St. Joseph's School
DARGAVILLE
(hereinafter referred to as "the School")
- B The School is a Roman Catholic Primary School for
boys and girls from new entrants to form two
offering Education with a Special Character.
- C The School was established in 1916 and up to the effective
date of integration was in part staffed by members of the
Roman Catholic Religious Order of Women known as the Sisters
of St. Joseph of the Sacred Heart. The said Order will continue
after the effective date of integration to offer teaching
staff to the school, for as long as it has members available
for that purpose.
- D The Minister and the Proprietor have agreed to enter
into this Deed of Agreement pursuant to the Private
Schools Conditional Integration Act 1975, whereby the
School is to be established as an integrated school.

NOW THIS DEED OF AGREEMENT WITNESSETH THAT IT IS HEREBY
COVENANTED AGREED AND DECLARED BY AND BETWEEN THE PARTIES
HERETO AS FOLLOWS :-

1. THAT the Minister and the Proprietor HEREBY AGREE that
the School is to become an integrated School pursuant to
the Private Schools Conditional Integration Act 1975.



+ J.M.

2. THE School's Special Character as is hereinafter described, shall incorporate the Education with a Special Character as provided in the School AND IT IS HEREBY AGREED AND DECLARED that the School shall at all times in the future be conducted and operated so as to maintain and preserve the School's Special Character and these presents shall be interpreted so as to maintain and preserve the Special Character of the School.

3. ON behalf of the Proprietor it is hereby agreed that:


(a) The Proprietor is the owner of all the land and improvements more particularly described in the First Schedule hereto (hereinafter referred to as "the Proprietor's land") and of which for the purposes of this Deed of Agreement, the School premises form part only. The School premises for the purposes of this Deed of Agreement being the land and improvements more particularly described in the Second Schedule hereto (hereinafter referred to as "the School premises").

(b) The Proprietor shall set apart and appropriate as owner all the School premises and all the chattels and other assets of the Proprietor associated with the School exclusively for the purposes of the School as an integrated School, so that the Controlling Authority of the School shall have the exclusive right to the possession and use of the School premises and chattels.

- PROVIDED THAT -



- (i) At the request of the Proprietor, the School Committee may grant the use of the School premises and chattels to the Proprietor or other person or persons at any time when the School premises and chattels are not required for school purposes and the School Committee shall not unreasonably or arbitrarily withhold its consent. The School Committee may require the Proprietor or other person or persons to pay a reasonable fee to the School Committee as a condition of such use.
- (ii) With the consent of the Proprietor, the School Committee may grant the use of the School premises and chattels to other person or persons at any time when the School premises and chattels are not required for School purposes and the Proprietor shall not unreasonably or arbitrarily withhold his consent. The School Committee may require any such person or persons to pay a reasonable fee to the School Committee as a condition of such use.
- (c) The Proprietor shall accept and meet the liability for all mortgages, liens and other charges upon the land and buildings comprising the School premises.
- (d) The Proprietor shall plan, pay for, and execute the improvements described in the Third Schedule hereto, to the School premises so as to bring the School buildings and associated facilities forming

 + J.M.

part of the School premises up to the minimum standard for comparable State Schools prevailing at the effective date of this Deed of Agreement. Such improvements are to be carried out in accordance with the dates specified against such improvements in the Third Schedule hereto. The proprietor shall upon completion of any improvements to electrical services described in the Third Schedule hereto arrange for the local Electrical Supply Authority to inspect the School premises in terms of Regulation 45 of the Electrical Supply Regulations 1976.

- (e) The Proprietor shall plan, execute and pay for such capital works and associated facilities at the School as may be approved or required, from time to time, by the Minister pursuant to Section 40 (2) (d) of the Private Schools Conditional Integration Act 1975.
- (f) The Proprietor may own or hold upon trust, and control and maintain, any land, buildings and associated facilities that, although not part of the integrated School premises in terms of this Deed of Agreement are regarded by the Proprietor as appropriate to maintain the Special Character of the School.
- (g) The Proprietor shall insure all the buildings forming part of the School premises and the Proprietor's chattels (if any) owned or held upon trust for the purposes of the School and the other assets owned by the Proprietor for the purposes of the School against risks




+ L. M.

normally insured against, in some responsible insurance office in New Zealand, and further acknowledges the obligation on him created by Section 40 (2) (h) of the Private Schools Conditional Integration Act 1975.

- (h) No person employed at the School and paid for his services in whole or in part out of moneys appropriated by Parliament, shall be paid by the Proprietor or his servants or agents any remuneration additional to that provided for by the Private Schools Conditional Integration Act 1975 or shall be granted or permitted any condition of service more favourable than that permitted in the case of a person employed in a comparable position in a State School PROVIDED HOWEVER that a teacher to whom the provisions of Section 71 of the Private Schools Conditional Integration Act 1975 apply, shall continue to be paid no less than the same salary, and be accorded the same status, as he received or was accorded on the day before the effective date of the integration of the School.

4. THE land and buildings constituting the School premises are subject to the mortgages, debts, liens, encumbrances, easements, licences, restrictions and other matters which affect the title to or enjoyment of the land and have the appurtenances or benefits attaching to the land more particularly described in the First Schedule hereto.




+J.M.

5. THE Special Character of the School is that it is a Roman Catholic School for boys and girls established by the Roman Catholic Bishop of the Diocese of Auckland, New Zealand, for the Roman Catholic Community of the Diocese of Auckland, which promotes and supports the School and of which the School is part, to provide and to continue to provide Education with a Special Character, that is to say :

The School is a Roman Catholic School in which the whole School community through the general School programme and in its Religious instructions and observances, exercises the right to live and teach the values of Jesus Christ. These values are as expressed in the Scriptures and in the practices, worship and doctrine of the Roman Catholic Church, as determined from time to time by the Roman Catholic Bishop of the Diocese of Auckland.

6. THE Proprietor of the School subject to the provisions of this Deed of Agreement :

- (a) Shall continue to have the responsibility to supervise the maintenance and preservation of the Education with a Special Character provided by the School;
- (b) Shall continue to have the right to determine from time to time what is necessary to preserve and safeguard the Special Character of the Education provided by the School and described in this Deed of Agreement;



+ J.M.

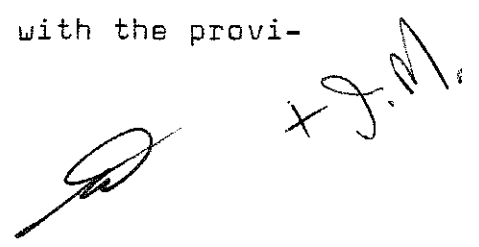
(c) May invoke the powers conferred upon him by the Private Schools Conditional Integration Act 1975, if in the opinion of the Proprietor the Special Character of the School as defined and described in this Deed of Agreement has been or is likely to be jeopardised or the Education with a Special Character provided by the School as defined and described in this Deed of Agreement is no longer preserved and safeguarded.

7. (a) THE Controlling Authority of the School shall be the Education Board of the Auckland Education District as constituted pursuant to Section 15 of the Education Act 1964.

(b) The School shall be managed by a School Committee constituted pursuant to the provisions of Section 26 of the Private Schools Conditional Integration Act 1975. The School Committee shall consist of :

(i) One (1) member to be appointed by the Proprietor of the School;

(ii) Four (4) members to be elected by the parents of children attending the School PROVIDED HOWEVER that in the event of the School roll altering at any time then the number of such members shall be fixed by ascertaining the number of members that a State School Committee would have, based on the current School roll in accordance with the provi-

Handwritten signature and initials at the bottom right of the page. The signature appears to be 'J.M.' with a large flourish, and the initials 'J.M.' are written next to it.

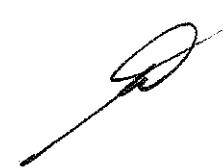
sions of the School Committees Administration Regulations 1965 and subtracting one from that number.

- (c) Any election conducted pursuant to Section 26 of the Private Schools Conditional Integration Act 1975 shall be conducted as nearly as possible in the manner prescribed by the School Committees Administration Regulations 1965 and any regulations made in amendment thereof or in substitution therefor and the provisions of those regulations shall, with any necessary modifications, be applied accordingly.
- (d) The control and management of the School shall be exercised subject to the provisions of Section 25 (6) of the Private Schools Conditional Integration Act 1975.

8. THE School had a roll of one hundred (100) pupils as at the 30th September 1980 being the year when the roll figures were last compiled. It is agreed by and between the parties hereto that the maximum roll of the School shall be one hundred (100) pupils

9. THE Proprietor agrees that pursuant to Paragraphs (d) and (e) of Clause 3 of this Deed of Agreement he will bring the School up to the minimum standard of accommodation laid down from time to time by the Director-General for a comparable State School.

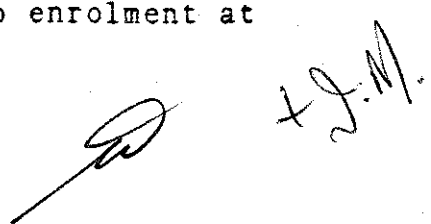
+ J.M.



10. (a) PREFERENCE of enrolment at the School under Section 29 (1) of the Private Schools Conditional Integration Act 1975 shall be given only to those children whose parents have established a particular or general religious connection with the Special Character of the School and the Controlling Authority shall not give preference of enrolment to the parents of any child unless the Proprietor has stated that those parents have established such a particular or general religious connection with the Special Character of the School.

(b) In accordance with Section 7 (6) (h) of the Private Schools Conditional Integration Act 1975, unless the Proprietor and the Controlling Authority otherwise agree and subject to places being available, the number of pupils whose parents do not have a preference of enrolment at the School in accordance with the provisions of Section 29 (1) of the Private Schools Conditional Integration Act 1975 shall be limited at all times to five (5) pupils out of the total roll of the School and the Controlling Authority shall not enrol more than that number PROVIDED THAT to maintain and preserve the Special Character of the School the Controlling Authority in classifying such pupils so enrolled shall endeavour to reasonably distribute them through the range of classes offered by the School.

(c) Wherever any difficulty arises related to enrolment at



Handwritten signature and initials in the bottom right corner of the page. The signature appears to be 'J.M.' with a flourish, and there are additional initials 'J.M.' written next to it.

the School in terms of Section 54 of the Private Schools Conditional Integration Act 1975, it may be referred to the Controlling Authority of the School pursuant to the provisions of the said section.

11. IT is agreed by and between the parties hereto that as Religious observances and Religious instruction form part of the Education with a Special Character provided by the School, Religious observances and Religious instruction in accordance with the determination made from time to time by the Roman Catholic Bishop of the Diocese of Auckland shall continue to form part of the School programme in accordance with Sections 31 and 32 of the Private Schools Conditional Integration Act 1975.

12. THE Proprietor, together with his servants, agents and licensees shall, subject to the proviso to Section 40 (2) (i) of the Private Schools Conditional Integration Act 1975, have at all reasonable times access to the School to ensure that the Special Character of the School is being maintained.

13. THE Proprietor, together with his servants, agents and licensees, shall have at all reasonable times access to the land and buildings of the School constituting the School premises sufficient to enable him to exercise the powers and carry out the responsibilities vested in him and imposed on him by the Private Schools Conditional Integration Act 1975 and by this Deed of Agreement.

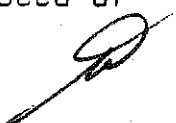


14. AN advertisement for the position of Principal of the School shall in accordance with Section 65 (1) (a) of the Private Schools Conditional Integration Act 1975 state that a willingness and ability to take part in Religious instruction appropriate to the Special Character of the School shall be a condition of appointment. Any person so appointed to the position of Principal shall accept these requirements as a condition of appointment. The Principal so appointed shall accept and recognise a responsibility to maintain and preserve the Special Character of the School.

15. IN the event of the staffing entitlement of the School altering at any time during the currency of this Deed of Agreement whereby the School becomes entitled to a position designated Director of Religious Studies in accordance with Section 65 (1) (b) of the Private Schools Conditional Integration Act 1975 it is agreed that such a position shall be part of the normal staffing entitlement of the School as established by Regulations made under the Education Act 1964 and as is more particularly described in the Fourth Schedule hereto and an advertisement for that position shall state that a willingness and ability to take part in Religious instruction appropriate to the Special Character of the School shall be a condition of appointment.


16. A person appointed as aforesaid to the position of Director of Religious Studies at the School shall undertake such teaching duties, if any, as may be required by the Principal of the School.

17. IN the event of the staffing entitlement of the School altering at any time during the currency of this Deed of

 + J.M.

Agreement, whereby the School becomes entitled to a position of Senior Teacher Junior Classes, it is agreed pursuant to Section 65 (1)(d) of the Private Schools Conditional Integration Act 1975 that the Controlling Authority of the School in advertising the position of Senior Teacher Junior Classes shall state that a willingness and ability to take part in Religious instruction appropriate to the Special Character of the School shall be a condition of appointment. Any person so appointed to the position of Senior Teacher Junior Classes shall accept these requirements as a condition of appointment.

18. THERE shall be two (2) other teaching positions at the School which in accordance with Section 65 (1) (c) of the Private Schools Conditional Integration Act 1975, shall be positions of importance carrying a responsibility for Religious instruction and an advertisement for those positions shall state that a willingness and ability to take part in Religious instruction appropriate to the Special Character of the School shall be a condition of appointment. Any person so appointed to these positions shall accept these requirements as a condition of appointment PROVIDED HOWEVER that in the event of the staffing entitlement of the School altering at any time during the currency of this Deed of Agreement then the number of teaching positions designated under Section 65(1)(c) of the Private Schools Conditional Integration Act 1975 as positions of importance carrying a responsibility for Religious instruction shall be determined in accordance with the then current staffing entitlement of the School under the Education Act 1964 and Regulations made thereunder and as is more particularly described in the Fourth Schedule hereto.

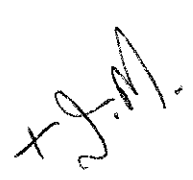



+ J.M.

19. IN the event of the staffing entitlement of the School altering at any time during the currency of this Deed of Agreement, whereby the School becomes entitled to a position of Deputy Principal, it is agreed pursuant to Section 66 of the Private Schools Conditional Integration Act 1975 that the position of Deputy Principal is to be a special position that requires particular capabilities in the teacher appointed, namely to assist in planning and organising the courses and programmes at the School to ensure that they reflect the Special Character of the School and an advertisement for the position of Deputy Principal shall state that possession of these capabilities shall be a condition of appointment. Any person so appointed to the position of Deputy Principal shall accept these requirements as a condition of appointment.

20. THE Proprietor may with the consent of the Controlling Authority in accordance with Section 69 (1) of the Private Schools Conditional Integration Act 1975 arrange for any retired teacher to undertake voluntary tasks to assist in the School with the teaching of Religious observances and Religious instruction appropriate to the Special Character of the School.


21. IT is agreed by and between the parties hereto that as Religious observances and Religious instruction form part of the Education with a Special Character provided by the School the Proprietor may employ any person as a Chaplain or otherwise, for the purposes of Religious observances or instruction and the provisions of Section 69 (2) and (3) of the Private Schools Conditional Integration Act 1975 shall apply.



22. THE Proprietor of the School shall have the right to enter into an Agreement with the parents or other persons accepting responsibility for the education of a child providing that, as a condition of enrolment and attendance of that child at the School, the parents or other persons shall pay attendance dues established in respect of the School or group of Integrated Schools owned by the Proprietor or Proprietors of other Roman Catholic Integrated Schools at such rates and subject to such conditions as may be approved from time to time by the Minister, by notice in the New Zealand Gazette in accordance with Section 36 of the Private Schools Conditional Integration Act 1975.

23. THE School is a Primary School for boys and girls from new entrants to form two and shall remain so until such time as an agreement to a change in this organisation of the School is reached between the Proprietor and the Minister and the parties hereto enter into a supplementary Deed of Agreement to give effect thereto.


24. WHERE any of the costs associated with the conduct of the Proprietor's land that is not part of the School premises cannot be separated from the costs associated with the operation of the School premises, the Proprietor and the School Committee and/or the Controlling Authority shall contribute to such costs according to their respective use of the services and facilities.

 + J.M.

25. IT is acknowledged by and between the parties hereto pursuant to Clause 24 hereof that certain of the services and facilities on or serving the Proprietor's land and buildings thereon are used in common for the purpose of the School premises and as is more particularly delineated on the plan forming part of the Second Schedule hereto. In particular the water supply, the power supply and the sewerage and drainage systems are all used in common and the costs of maintaining such services and facilities shall be apportioned as provided in Clause 24 hereof. If practicable the power supply to the School premises shall be separately metered at the expense of the Proprietor. Where such services or facilities are wholly or partly situated outside the School premises the Proprietor will continue to make such services or facilities available to the School premises.

26. THE Proprietor shall not engage any teachers between the date of execution of this Deed of Agreement and the effective date of integration other than those whose names have already been notified by the Proprietor to the Director-General of Education without first obtaining the consent of the Director-General.

27. THE Proprietor shall reimburse the Minister for the payment of salary, wages and proportion of holiday pay due and paid by the Minister in respect of the 1981 School year to any person employed at the School up to the effective date of Integration.


+ J.M.

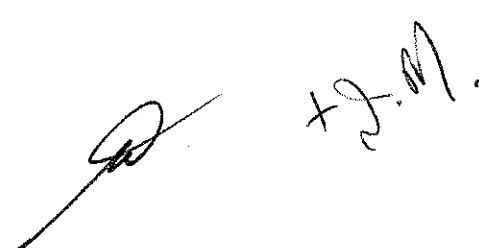
28. THE Proprietor will demolish Block A (as shown on the plan attached to the Second Schedule) and will replace this building with the classroom block specified in the Third Schedule. The new block is to be completed to Ministry of Works and Development standards for a comparable State school by 31 March 1983. Until the new block is so completed neither the Minister nor the Controlling Authority will be responsible for the maintenance of Block A and the Proprietor will carry out maintenance to a reasonable standard on Block A until the block is demolished.

29. THE Minister shall subject to Clause 3(d) and (e) of this Deed of Agreement after the effective date hereof maintain the School premises and the associated facilities in a state of repair order and condition as for a comparable State School under the same Controlling Authority and provide for the maintenance of the chattels as though the School were a State School. The School shall be entitled to such furniture and equipment as the Controlling Authority supplies from time to time to comparable State Schools.

30. THE effective date of this Deed of Agreement shall be the 7th day of September, 1981.

31. ON and after the effective date specified in this Deed of Agreement the School shall be an integrated school in terms of the Private Schools Conditional Integration Act 1975.

IN WITNESS WHEREOF these presents have been executed the day and year first hereinbefore written.

Two handwritten signatures are present at the bottom right of the page. The first is a stylized signature, possibly 'J.M.', and the second is a more legible signature, possibly 'J.M.', with a cross at the end.

SIGNED by JOHN MACKEY THE ROMAN
CATHOLIC BISHOP OF THE DIOCESE
OF AUCKLAND and sealed with his
Seal of Office in the presence
of:

+ John Mackey

John Mackey
Auckland Catholic
Education Office

SIGNED FOR AND ON BEHALF OF HER MAJESTY
THE QUEEN by MERVYN LANGLOIS WELLINGTON
Minister of Education in the presence
of:

Mervyn Langlois

John S. [unclear]
Public Servant
Wellington.

FIRST SCHEDULE

Description of total land buildings and other improvements comprising the Proprietor's land of which the School premises form part.

THE PROPRIETOR'S LAND All that Land, School buildings and other improvements owned by The Roman Catholic Bishop of the Diocese of Auckland, situate at Dargaville, New Zealand, delineated in green on the annexed plan, being known as Saint Joseph's School, Dargaville, and being more particularly described as follows:

FIRST all that Freehold parcel of land containing 1.2095 hectares more or less Lots Nos 89 (eighty nine) to 96 (ninety six) both inclusive on a plan deposited in the Land Registry Office at Auckland under No. 6979 which said parcel of land is portion of a Block situated in the Kaihu Survey District called Kaihu 2A and being all the land in Certificate of Title Volume 185 folio 6 (North Auckland Registry).

Agreement respecting fencing contained in Transfer No. 62653.

SECONDLY all that Freehold parcel of land containing 5544 square metres more or less situated in the Borough of Dargaville being Lot 1 on a plan deposited in the Land Registry Office at Auckland as No. 33637 and being part of the Kaihu No. 2D Block and being all the land in Certificate of Title Volume 859 folio 208 (North Auckland Registry)

Agreements as to fencing contained in Transfers Nos 38387, 400845 and 408927.

There is a debt owing to the Diocesan Development Fund of the Roman Catholic Diocese of Auckland.

+ J.M.

9

SECOND SCHEDULE

Description of land buildings and other improvements comprising the School premises

THE SCHOOL PREMISES

All that part of the Proprietor's land as described in the First Schedule hereto, delineated in red on the annexed plan of the Proprietor's land, which plan forms part of this Schedule TOGETHER WITH all the School buildings and other improvements thereon.

+ J.M.

A handwritten signature, possibly reading 'J.M.', is located in the bottom right corner of the page.

ST JOSEPH'S SCHOOL, DARGAVILLE

THIRD SCHEDULE

WORKS TO BE CARRIED OUT BY THE PROPRIETOR IN RELATION
TO THE INTEGRATED SCHOOL

These works are to be planned, executed and paid for by the proprietor subject to the provisions of this schedule in relation to the buildings and associated facilities to bring them up to the minimum standard for a comparable state school. All work is to be carried out by competent tradesmen or in a workmanlike manner to the Auckland Education Board standards.

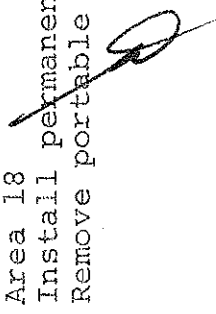
AGREED PHASING OF WORK TO BE COMPLETED BY

	7.9.81	31.3.82	31.3.83	31.3.84	31.3.85	31.3.86
SITE						
Regrade playfield area to remove high spots and fill depressions, reform batters and pipe open drains				x		
Provide an effective field drainage system and direct water to proper drainage outlets from the site				x		
Erect boundary fences to state standards and upgrade existing barriers		x x				
Tighten protective wire mesh fencing around courts						
Improve drainage outlets from courts and upgrade concrete and half pipe channels - install chamber inlet at end of channel						
Strengthen corrugated iron fence between blocks E and D		x		x		
Replace or resurface substandard concrete paving and paths						
Replace incinerator with an approved type and set in weatherproof area		x				
Provide sufficient cycle stands for bicycles brought to the school		x				
BLOCK B						
Exterior						
Repaint whole of exterior including roof						
Ease all exterior doors and provide and fit door checks						
Provide and fix hand rails to sides of terrace		x		x		
Replace spouting to area 14		x				
Reposition exterior light over south wall to shine on path		x				

	7.9.81	31.3.82	31.3.83	31.3.84	31.3.85	31.3.86
BLOCK B (continued)						
<u>Interior</u>						
Area 11 and 12						
Relocate display board to free folding dividing wall and install protective trim around display board		x				
Repair floor boards, sand to smooth clean finish and provide "Duralay" or similar with vinyl wet area to exterior doors		x	x			
Provide and fit door check, door to passage						
Area 13						
Provide and fit cupboard catches		x				
Area 15						
Provide and fit door check to exterior door		x				
Sand floor and provide "A" grade lino to floor		x				
Replace one hand basin		x				
Area 16						
Ease cupboard doors		x				
<u>General</u>						
Egress						
Replace hardware on exterior egress doors with an approved type which can be opened from the inside without the use of keys	x					
MECHANICAL						
Area 16						
Remove portable electric heater		x				
Upgrade heating to state school standards						
ELECTRICAL						
Fit time switch control on heaters		x				
Fit enclosing cover on switchboards and improve circuit legend		x				

+8M

	7.9.81	31.3.82	31.3.83	31.3.84	31.3.85	31.3.86
BLOCK B (continued)						
Area 11 and 12 Install additional power outlets to state standards as required by Education Board		x				
FIRE PROTECTION						
Area 15 Alter exit door between areas 15/16 to open in direction of exit travel Install 1 x 9 litre water CO ² extinguisher in corridor 15	x	x				
BLOCK C						
Exterior						
Repaint whole of exterior including roof Provide and fit cover batten to store sheathing		x		x		
Interior						
Area 17 Tidy up area and repaint				x		
Area 18 Ease exterior door, provide and fit door check Ease all sashes Redecorate Sand floor to clean smooth finish and provide Duralay or similar		x x		x		
MECHANICAL						
Area 18 Install permanent heating to state standards Remove portable electric heater	x	x				



	7.9.81	31.3.82	31.3.83	31.3.84	31.3.85	31.3.86
ELECTRICAL						
Area 18						
Upgrade lighting to state school standards			x			
FIRE PROTECTION						
Ease the casement windows on the end wall of the building	x					
Install a 9 litre water CO ₂ extinguisher in area 18		x				
Remove the 3 way adapter from the ceiling light rose and install additional light outlets		x				
ELECTRICAL GENERAL						
Replace main switchboard. Install separate tariff meter for school buildings to be integrated		x				
Upgrade wiring and installations		x				
Tighten or raise powerline drooping over the paved court between Blocks A and B	x					
BLOCK E						
Upgrade to Auckland Education Board standards			x			
BLOCK F						
Replace footbath with acceptable facility		x				
Make building weatherproof		x				
Remove chemicals from filter room		x				
Replace filter plant			x			
Repair or renew roof and spouting		x				
ELECTRICAL						
Reterminate and secure supply flex to chlorine pump in area 29		x				


M-J+

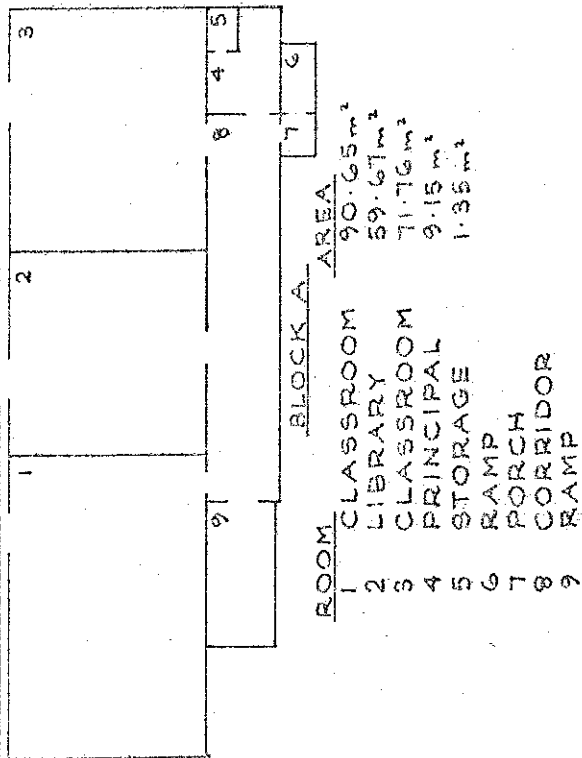
Handwritten initials

	7.9.81	31.3.82	31.3.83	31.3.84	31.3.85	31.3.86
<u>BLOCK G</u>						
<u>Exterior</u>						
Repaint roofing and attend to rust areas and loose nails				x		
<u>Interior</u>						
Area 31						
Provide seamless flooring "Flecto" or similar		x				
Provide and fit door check and hold back hook		x				
Provide and install an approved facility for the disposal of sanitary towels		x				
Area 32						
Provide and fix cistern lids		x				
Replace missing louvre blade		x				
Provide and fit door check and hold back hook		x				
Provide seamless flooring "Flecto" or similar		x				
<u>STRUCTURAL</u>						
Laterally strengthen end masonry screen wall to MWD standard		x				
Upgrade subdividing partition containing major crack following joints in blockwork concrete foot trough		x				
<u>FIRE PROTECTION GENERAL</u>						
Install a low voltage fail safe manual fire alarm system with call points in areas 8 and 15 and sounders in area 8 and exterior frontage of Block B	x					

Handwritten signature

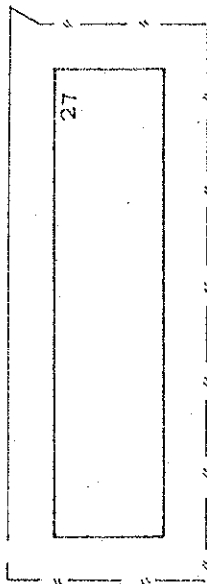
	7.9.81	31.3.82	31.3.83	31.3.84	31.3.85	31.3.86
BUILDING REQUIREMENTS						
Demolish Block A Provide the following facilities by remodelling or new construction: Class area totalling 140m ²) Bookroom of 28m ²) Casualty/sickroom of 9m ²) 1 whb for male staff toilet 1 wc and 1 whb for female staff toilet 1 sanitary towel disposal unit for female staff toilet 1 sanitary towel disposal unit for girls toilet		x x x x	x x			
BLOCK A ELECTRICAL						
Repair broken socket outlet area 1	x					
FIRE PROTECTION						
Replace hardware fittings on exterior egress doors with a type which can be opened from the inside without the use of keys Alter exit doors from area 8 to open outward in the direction of travel Replace defective timber in ramp area 6 Install 1 x 9 litre water CO ₂ extinguisher area 8	x x x x					x





ROOM	AREA
1 CLASSROOM	90.65m ²
2 LIBRARY	59.67m ²
3 CLASSROOM	71.76m ²
4 PRINCIPAL	9.15m ²
5 STORAGE	1.35m ²
6 RAMP	
7 PORCH	
8 CORRIDOR	
9 RAMP	

TOTAL AREA = 319.66m²

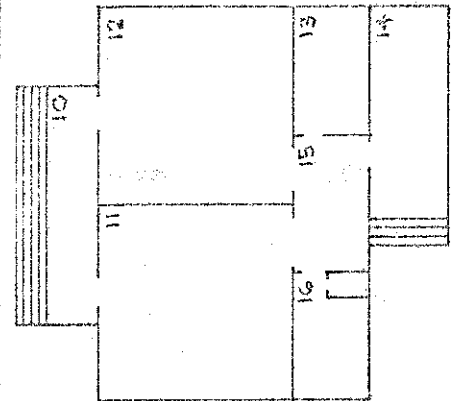


ROOM	AREA
27 SWIMMING POOL	80.52m ²



ROOM	AREA
28 GIRLS' CHANGING	
29 FILTER ROOM	
30 BOYS' CHANGING	

TOTAL AREA = 34.46m²



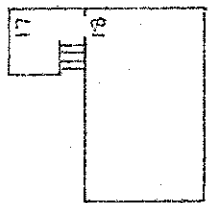
ROOM	AREA
10 TERRACE	57.76m ²
11 CLASSROOM	57.46m ²
12 CLASSROOM	13.48m ²
13 STOREROOM	
14 CLOAKROOM	
15 FOYER	
16 STAFF ROOM	11.63m ²

TOTAL AREA = 223.6m²



ROOM	AREA
31 GIRLS' TOILETS	
32 BOYS' TOILETS	

TOTAL AREA = 39.08m²



ROOM	AREA
17 STORAGE	4.56m ²
18 CLASSROOM	30.96m ²

TOTAL AREA = 41.82m²

DEPARTMENT OF EDUCATION

buildings division: integration of private schools

School: ST JOSEPH'S SCHOOL, DARGAVILLE

Drawing No:

EIP 140 02

Date:

22 MAY 1980

Revision

3 AUGUST 1981

Scale:

1:300

SHEET 2 OF 2 SHEETS

Drawn: JES

+2