

THIS DEED OF AGREEMENT is made the 12 day of October One thousand nine hundred and eighty-two (1982)

BETWEEN THE ROMAN CATHOLIC BISHOP OF THE DIOCESE OF HAMILTON a Corporation Sole (hereinafter with his successors referred to as "the Proprietor") of the first part

AND HER MAJESTY THE QUEEN acting by and through the Minister of Education (hereinafter referred to as "the Minister") of the second part

WHEREAS:

- A The Proprietor is the owner of St. Joseph's School, WHAKATANE, (hereinafter referred to as "the School")
- B The School is a Roman Catholic Primary School for girls and boys from new entrants to Form Two (2) offering Education with a Special Character.
- C The School was established in 1933 and up to the effective date of integration was in part staffed by members of the Roman Catholic Religious Order of Women known as the Sisters of St. Joseph of the Sacred Heart. The said Order will continue after the effective date of integration to offer teaching staff to the School, so long as it has members available for that purpose.
- D The Minister and the Proprietor have agreed to enter into this Deed of Agreement pursuant to the Private Schools Conditional Integration Act 1975, whereby the School is to be established as an integrated School.

NOW THIS DEED OF AGREEMENT WITNESSETH THAT IT IS HEREBY COVENANTED AGREED AND DECLARED BY AND BETWEEN THE PARTIES HERETO as follows:-

1. THAT the Minister and the Proprietor HEREBY AGREE that the School is to become an integrated School pursuant to the Private Schools Conditional Integration Act 1975.

2. THE School's Special Character as is hereinafter described, shall incorporate the Education with a Special Character as provided in the School AND IT IS HEREBY AGREED AND DECLARED that the School shall at all times in the future be conducted and operated so as to maintain and preserve the School's Special Character and these presents shall be interpreted so as to maintain and preserve the Special Character of the School.

3. ON behalf of the Proprietor it is hereby agreed that:-

- (a) The Proprietor is the owner of all the land and improvements more particularly described in the **First Schedule** hereto (hereinafter referred to as "**the Proprietor's land**") and of which for the purposes of this Deed of Agreement, the School premises form part only. The School premises for the purposes of this Deed of Agreement being the land and improvements more particularly described in the **Second Schedule** hereto (hereinafter referred to as "**the School premises**").
- (b) The Proprietor shall set apart and appropriate as owner all the School premises and all the chattels and other assets of the Proprietor associated with the School exclusively for the purposes of the School as an integrated School, so that the Controlling Authority of the School shall have the exclusive right to the possession and use of the School premises and chattels -

PROVIDED THAT

- (i) At the request of the Proprietor, the School Committee may grant the use of the School premises and chattels to the Proprietor or other person or persons at any time when the School premises and chattels are not required for school

purposes and the School Committee shall not unreasonably or arbitrarily withhold its consent. The School Committee may require the Proprietor or other person or persons to pay a reasonable fee to the School Committee as a condition of such use.

- (ii) With the consent of the Proprietor, the School Committee may grant the use of the School premises and chattels to other person or persons at any time when the School premises and chattels are not required for School purposes and the Proprietor shall not unreasonably or arbitrarily withhold his consent. The School Committee may require any such person or persons to pay a reasonable fee to the School Committee as a condition of such use.
- (c) The Proprietor shall accept and meet the liability for all mortgages, liens and other charges upon the land and buildings comprising the School premises.
- (d) The Proprietor shall plan, pay for, and execute the improvements described in the **Third Schedule** hereto, to the School premises, so as to bring the School buildings and associated facilities forming part of the School premises up to the minimum standard for comparable State Schools prevailing at the effective date of this Deed of Agreement. Such improvements are to be carried out in accordance with the dates specified against such improvements in the **Third Schedule** hereto. The Proprietor shall upon completion of any improvements to the electrical services described in the **Third Schedule** hereto arrange for the local Electrical Supply Authority to inspect the School premises in terms of Regulation 45 of the Electrical Supply Regulations 1976.
- (e) The Proprietor shall plan, execute and pay for such capital works and associated facilities at the School as may be approved or required, from time to time, by the Minister pursuant to Section 40(2)(d) of the Private Schools Conditional Integration Act 1975.

- (f) The Proprietor may own or hold upon trust, and control and maintain, any land, buildings and associated facilities that, although not part of the integrated School premises in terms of this Deed of Agreement are regarded by the Proprietor as appropriate to maintain the Special Character of the School.
- (g) The Proprietor shall insure all the buildings forming part of the School premises and the Proprietor's chattels (if any) owned or held upon trust for the purposes of the School and the other assets owned by the Proprietor for the purposes of the School against risks normally insured against, in some responsible insurance office in New Zealand, and further acknowledges the obligation on him created by Section 40(2)(h) of the Private Schools Conditional Integration Act 1975.
- (h) No person employed at the School and paid for his services in whole or in part out of moneys appropriated by Parliament, shall be paid by the Proprietor or his servants or agents any remuneration additional to that provided for by the Private Schools Conditional Integration Act 1975 or shall be granted or permitted any condition of service more favourable than that permitted in the case of a person employed in a comparable position in a State School **PROVIDED HOWEVER** that a teacher to whom the provisions of Section 71 of the Private Schools Conditional Integration Act 1975 apply, shall continue to be paid no less than the same salary, and be accorded the same status, as he received or was accorded on the day before the effective date of the integration of the School.

4. THE land and buildings constituting the School premises are subject to the mortgages, debts, liens, encumbrances, easements, licences, restrictions and other matters which affect the title to or enjoyment of the land and have the appurtenances or benefits attaching to the land more particularly described in the **First Schedule** hereto.

5. THE Special Character of the School is that it is a Roman Catholic School for girls and boys established for the Roman Catholic community of the Diocese of Hamilton which promotes and supports the School and of which the School is part, to provide and to continue to provide Education with a Special Character, that is to say :-

The School is a Roman Catholic School in which the whole School community through the general School programme and in its Religious instructions and observances, exercises the right to live and teach the values of Jesus Christ. These values are as expressed in the Scriptures and in the practices, worship and doctrine of the Roman Catholic Church, as determined from time to time by the Roman Catholic Bishop of the Diocese of Hamilton

6. THE Proprietor of the School subject to the provisions of this Deed of Agreement :-

- (a) Shall continue to have the responsibility to supervise the maintenance and preservation of the Education with a Special Character provided by the School;
- (b) Shall continue to have the right to determine from time to time what is necessary to preserve and safeguard the Special Character of the Education provided by the School and described in this Deed of Agreement;
- (c) May invoke the powers conferred upon him by the Private Schools Conditional Integration Act 1975, if in the opinion of the Proprietor the Special Character of the School as defined and described in this Deed of Agreement has been or is likely to be jeopardised or the Education with a Special Character provided by the School as defined and described in this Deed of Agreement is no longer preserved and safeguarded.

7. (a) THE Controlling Authority of the School shall be the Education Board of the South Auckland Education District as constituted pursuant to Section 15 of the Education Act 1964.

(b) The School shall be managed by a School Committee constituted pursuant to the provisions of Section 26 of the Private Schools Conditional Integration Act 1975. The School Committee shall consist of :-

(i) One (1) member to be appointed by the Proprietor of the School;

(ii) Eight (8) members to be elected by the parents of the children attending the School PROVIDED HOWEVER that in the event of the School roll altering at any time then the number of such members shall be fixed by ascertaining the number of members that a State School Committee would have, based on the current School roll in accordance with the provisions of the School Committees Administration Regulations 1965 and subtracting one from that number.

(c) Any election conducted pursuant to Section 26 of the Private Schools Conditional Integration Act 1975 shall be conducted as nearly as possible in the manner prescribed by the School Committees Administration Regulations 1965 and any regulations made in amendment thereof or in substitution therefor and the provisions of those regulations shall, with any necessary modifications, be applied accordingly.

(d) The control and management of the School shall be exercised subject to the provisions of Section 25(6) of the Private Schools Conditional Integration Act 1975.

8. THE School had a roll of two hundred and sixty-one (261) pupils as at the 1st day of July 1982, being the year when the roll figures were last

compiled. It is agreed by and between the parties hereto that the maximum roll of the School shall be two hundred and seventy (270) pupils.

9. THE Proprietor agrees that pursuant to **paragraphs (d) and (e) of Clause 3** of this Deed of Agreement he will bring the School up to the minimum standard of accommodation laid down from time to time by the Director-General for a comparable State School.

10. (a) PREFERENCE of enrolment at the School under Section 29(1) of the Private Schools Conditional Integration Act 1975 shall be given only to those children whose parents have established a particular or general religious connection with the Special Character of the School and the Controlling Authority shall not give preference of enrolment to the parents of any child unless the Proprietor has stated that those parents have established such a particular or general religious connection with the Special Character of the School.

(b) In accordance with Section 7(6)(h) of the Private Schools Conditional Integration Act 1975, unless the Proprietor and the Controlling Authority otherwise agree and subject to places being available, the number of pupils whose parents do not have a preference of enrolment at the School in accordance with the provisions of Section 29(1) of the Private Schools Conditional Integration Act 1975 shall be limited at all times to fourteen (14) pupils out of the total roll of the School and the Controlling Authority shall not enrol more than that number **PROVIDED THAT** to maintain and preserve the Special Character of the School the Controlling Authority in classifying such pupils so enrolled shall endeavour to reasonably distribute them through the range of classes offered by the School.

- (c) Wherever any difficulty arises related to enrolment at the School in terms of Section 54 of the Private Schools Conditional Integration Act 1975, it may be referred to the Controlling Authority of the School pursuant to the provisions of the said section.

11. IT is agreed by and between the parties hereto that as Religious observances and Religious instruction form part of the Education with a Special Character provided by the School, Religious observances and Religious instruction in accordance with the determination made from time to time by the Roman Catholic Bishop of the Diocese of Hamilton shall continue to form part of the School programme in accordance with Sections 31 and 32 of the Private Schools Conditional Integration Act 1975

12. THE Proprietor, together with his servants, agents and licensees, shall, subject to the proviso to Section 40(2)(i) of the Private Schools Conditional Integration Act 1975, have at all reasonable times access to the School to ensure that the Special Character of the School is being maintained.

13. THE Proprietor, together with his servants, agents and licensees, shall have at all reasonable times access to the land and buildings of the School constituting the School premises sufficient to enable him to exercise the powers and carry out the responsibilities vested in him and imposed on him by the Private Schools Conditional Integration Act 1975 and by this Deed of Agreement.

14. AN advertisement for the position of Principal of the School shall in accordance with Section 65(1)(a) of the Private Schools Conditional Integration Act 1975 state that a willingness and ability to take part in Religious instruction appropriate to the Special Character of the School shall be a condition of appointment. Any person so appointed to the position

of Principal shall accept these requirements as a condition of appointment. The Principal so appointed shall accept and recognise a responsibility to maintain and preserve the Special Character of the School.

15. THERE shall be a position of responsibility at the School to be designated Director of Religious Studies in accordance with Section 65(1)(b) of the Private Schools Conditional Integration Act 1975, which position shall be part of the normal staffing entitlement of the School as established by Regulations made under the Education Act 1964 and an advertisement for that position shall state that a willingness and ability to take part in Religious instruction appropriate to the Special Character of the School shall be a condition of appointment. Any person so appointed to the position of Director of Religious Studies shall accept these requirements as a condition of appointment. The Director of Religious Studies shall give guidance and provide effective leadership in Religious instruction and observances throughout the School **PROVIDED HOWEVER** that in the event of the staffing entitlement of the School altering at any time during the currency of this Deed of Agreement then the position of Director of Religious Studies shall be determined in accordance with the then current staffing entitlement of the School under the Education Act 1964 and Regulations made thereunder and as is more particularly described in the **Fourth Schedule** hereto.

16. A person appointed as aforesaid to the position of Director of Religious Studies at the School shall undertake such teaching duties, if any, as may be required by the Principal of the School.

17. THERE shall be a position at the School to be designated as Senior Teacher Junior Classes in accordance with Section 65(1)(d) of the Private Schools Conditional Integration Act 1975 and the Controlling Authority of the School in advertising the position of Senior Teacher Junior Classes shall state that a willingness and ability to take part in Religious instruction appropriate to the Special Character of the School shall be a condition of

appointment. Any person so appointed to the position of Senior Teacher Junior Classes shall accept these requirements as a condition of appointment **PROVIDED HOWEVER** that in the event of the staffing entitlement of the School altering at any time during the currency of this Deed of Agreement then the position of Senior Teacher Junior Classes shall be determined in accordance with the then current staffing entitlement of the School under the Education Act 1964 and Regulations made thereunder and as is more particularly described in the **Fourth Schedule** hereto.

18. THERE shall be two (2) other teaching positions at the School which in accordance with Section 65(1)(c) of the Private Schools Conditional Integration Act 1975, shall be positions of importance carrying a responsibility for Religious instruction and an advertisement for those positions shall state that a willingness and ability to take part in Religious instruction appropriate to the Special Character of the School shall be a condition of appointment. Any person so appointed to these positions shall accept these requirements as a condition of appointment **PROVIDED HOWEVER** that in the event of the staffing entitlement of the School altering at any time during the currency of this Deed of Agreement then the number of teaching positions designated under Section 65(1)(c) of the Private Schools Conditional Integration Act 1975 as positions of importance carrying a responsibility for Religious instruction shall be determined in accordance with the then current staffing entitlement of the School under the Education Act 1964 and Regulations made thereunder and as is more particularly described in the **Fourth Schedule** hereto.

19. THE position of Deputy Principal at the School is agreed pursuant to Section 66 of the Private Schools Conditional Integration Act 1975 to be a special position that requires particular capabilities in the teacher appointed, namely to assist in planning and organising the courses and programmes at the School to ensure that they reflect the Special Character of the School and an advertisement for the position of Deputy Principal shall state that possession of these capabilities shall be a condition of appointment. Any person so appointed to the position of Deputy Principal shall accept these requirements as a condition of appointment.

20. THE Proprietor may with the consent of the Controlling Authority in accordance with Section 69(1) of the Private Schools Conditional Integration Act 1975 arrange for any retired teacher to undertake voluntary tasks to assist in the School with the teaching of Religious observances and Religious instruction appropriate to the Special Character of the School.

21. IT is agreed by and between the parties hereto that as Religious observances and Religious instruction form part of the Education with a Special Character provided by the School the Proprietor may employ any person as a Chaplain or otherwise, for the purposes of Religious observances or instruction and the provisions of Section 69(2) and (3) of the Private Schools Conditional Integration Act 1975 shall apply.

22. THE Proprietor of the School shall have the right to enter into an Agreement with the parents or other persons accepting responsibility for the education of a child providing that, as a condition of enrolment and attendance of that child at the School, the parents or other persons shall pay attendance dues established in respect of the School or group of Integrated Schools owned by the Proprietor or Proprietors of other Roman Catholic Integrated Schools at such rates and subject to such conditions as may be approved from time to time by the Minister, by notice in the New Zealand Gazette in accordance with Section 36 of the Private Schools Conditional Integration Act 1975.

23. THE School is a Primary School for girls and boys from new entrants to Form Two (2) and shall remain so until such time as an agreement to a change in this organisation of the School is reached between the Proprietor and the Minister and the parties hereto enter into a supplementary Deed of Agreement to give effect thereto.

24. WHERE any of the costs associated with the conduct of the Proprietor's land and buildings that are not part of the School premises

cannot be separated from the costs associated with the operation of the School premises, the Proprietor and the School Committee and/or the Controlling Authority shall contribute to such costs according to their respective use of the services and facilities.

25. IT is acknowledged by and between the parties hereto pursuant to **clause 24** hereof that certain of the services and facilities on or serving the Proprietor's land and buildings and other improvements thereon are used in common for the purpose of the School premises and as is more particularly delineated on the plan forming part of the **Second Schedule** hereto. In particular, the access from King Street, the water supply, the power supply and the sewerage system are all used in common and the costs of maintaining such services and facilities shall be apportioned as provided in **clause 24** hereof. If practicable the power supply to the School premises shall be separately metered at the expense of the Proprietor. Where such services or facilities are wholly or partly situated outside the School premises the Proprietor will continue to make such services or facilities available to the School premises.

26. THE Proprietor agrees to maintain Block I more particularly delineated on the plan forming part of the **Second Schedule** hereto so as to meet Department of Education and Ministry of Works and Development requirements during the period of their use by the School. The Controlling Authority shall be responsible for the running or operating costs associated with the use of the said Block in particular the power supply, water, sewerage, drainage and cleaning costs.

27. THE Proprietor shall not engage any teachers between the date of execution of this Deed of Agreement and the effective date of integration other than those whose names have already been notified by the Proprietor to the Director-General of Education without first obtaining the consent of the Director-General.

28. THE Proprietor shall reimburse the Minister for the payment of salary, wages and the proportion of School holiday pay due and paid by the Minister in respect of the 1982 School year to any person employed at the School up to the effective date of integration PROVIDED THAT the Proprietor shall not be required to reimburse the Minister in respect of any salary, wages and holiday pay which has been paid to teachers up to the date of integration by the Minister in accordance with the terms of the Minister's letter of 4th December 1980 to Archbishop Williams.

29. THE Minister shall subject to clause 3(d) and (e) and clause 26 of this Deed of Agreement after the effective date hereof maintain the School premises and the associated facilities in a state of repair order and condition as for a comparable State school under the same Controlling Authority and provide for the maintenance of the chattels as though the School were a State School. The School shall be entitled to such furniture and equipment as the Controlling Authority supplies from time to time to comparable State Schools.

30. THE effective date of this Deed of Agreement shall be the 13th day of October One thousand nine hundred and eighty-two (1982)

31. ON and after the effective date specified in this Deed of Agreement the School shall be an integrated school in terms of the Private Schools Conditional Integration Act 1975.

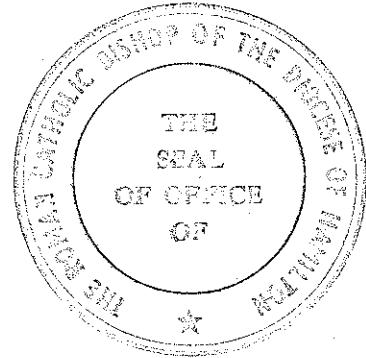
IN WITNESS WHEREOF these presents have been executed the day and year first hereinbefore written.

SIGNED by EDWARD RUSSELL
GAINES, THE ROMAN CATHOLIC
BISHOP OF THE DIOCESE OF
HAMILTON and sealed with his Seal of
Office in the presence of:-

) *Edward Russell Gaines*
)
)
)
)

C. E. Spe.
Administrator.

16 Berkeley Avenue,
Hillcrest, Hamilton.



SIGNED for and on behalf of HER
MAJESTY THE QUEEN by MERVYN
LANGLOIS WELLINGTON Minister of
Education in the presence of:-

) *Mervyn Langlois*
)
)
)
)

M. J. Fokker
12 Hahiria Road
Hataitai, Wellington.
(Private Secretary)

FIRST SCHEDULE

Description of total land, buildings and other improvements comprising the Proprietor's land of which the School premises form part

The Proprietor's Land

All that land, buildings and other improvements owned by the Roman Catholic Bishop of the Diocese of Hamilton situate in King Street, Whakatane, being known as **St. Joseph's School, Whakatane**, and being more particularly described as follows and delineated in green on the plan forming part of the **Second Schedule** hereto.

FIRST all that freehold parcel of land containing 1.2646 hectares more or less situated in the Borough of Whakatane being portion of Allotment two hundred and thirty-one (231) of the Parish of Waimana and being all the land in Certificate of Title Volume 501 Folio 14 (South Auckland Registry).

This title is limited as to parcels.

This Certificate of Title is issued subject to Section 23 of the Land Transfer (Compulsory Registration of Titles) Act 1924.

SECONDLY all that freehold parcel of land containing 6828 square metres more or less situated in the Borough of Whakatane being portion of Allotment two hundred and thirty-one (231) of the Parish of Waimana and being all the land in Certificate of Title Volume 501 Folio 16 (South Auckland Registry)

This title is limited as to parcels.

THIRDLY all that freehold parcel of land containing 78 square metres more or less situated in the Borough of Whakatane being Allotment 429 of the Parish of Waimana and being formerly part of Lot one (1) on a plan deposited in the Land

Registry Office at Auckland as No. 29184 and being part of Allotment 231 of the said Parish and being all the land in Certificate of Title Volume 799 Folio 89 (South Auckland Registry)

There is a debt owing to the Hamilton Advances Account (Diocesan Development Fund) of the Roman Catholic Diocese of Hamilton.

SECOND SCHEDULE

Description of land, buildings and other improvements comprising the School premises

The School Premises:

All that part of the Proprietor's land as described in the **First Schedule** hereto, delineated in red on the annexed plan of the Proprietor's land, which forms part of this Schedule, TOGETHER WITH all the School buildings and other improvements thereon SAVE AND EXCEPT Block H more particularly delineated in blue on the annexed plan RESERVING NEVERTHELESS full rights of access between the non-integrating areas and of ingress and egress to and from those non-integrating areas over the access shaded yellow on the annexed plan from and to King Street, Whakatane.

ST JOSEPH'S SCHOOL, WHAKATANE

THIRD SCHEDULE

WORKS TO BE CARRIED OUT BY THE PROPRIETOR IN RELATION TO THE INTEGRATED SCHOOL

These works are to be planned, executed and paid for by the Proprietor subject to the provisions of this schedule in relation to the buildings and associated facilities to bring them up to the minimum standard for a comparable state school.

In those cases where the words "half cost to be met by Education Board" appear in relation to particular works, the buildings supervisor of the South Auckland Education Board shall draw up the specifications for such particular works and the proprietor shall obtain his approval to the contractor and the price before commencing such works. All work is to be carried out by competent tradesmen or in a workmanlike manner to the South Auckland Education Board standards.

AGREED PHASING OF WORK TO BE COMPLETED BY

SITE	13.10.82	31.3.84	31.3.85	31.3.86	31.3.87	31.3.88
Replace existing incinerator with a type to Education Board requirements		x				
Fit four 40mm galvanised pipe braces set in concrete two at each end of volley ball wall for extra stability		x				
Provide staff car part south of Block E		x				
Provide additional cycle stands to Education Board standards		x				
Provide heavy vehicle access to school grounds at South East corner of Block E		x				
<u>BLOCK D</u>						
<u>Interior</u>						
Area 1						
Refix loose carpet tiles		x				
Repaint doors and cupboard unit		x				
Paint ceiling and door jamb in area 2		x				
Area 3						
Paint ceiling and door jamb		x				
Area 4						
Refix loose carpet tiles		x				
Repaint doors and cupboard unit		x				
Area 5						
Repaint doors and blockwork		x				

1 E.H.

ACREED PHASING OF WORK TO BE COMPLETED BY

BLOCK D (continued)		13.10.82	31.3.84	31.3.85	31.3.86	31.3.87	31.3.88
<u>Structural</u> Strengthen building to MWD standards <u>Mechanical</u> Upgrade heating to state school standards in areas 1 and 4 <u>Electrical</u> Upgrade lighting to state school standards in areas 1 and 4 <u>Fire Protection</u> Means of Egress Replace locks on doors to areas 1 and 4 with a type that can be opened without the use of a key <u>Extinguishing Equipment</u> Provide a hose reel with 25m of 12.5m hosing in area 5	x						
				x			
				x			
				x			
BLOCK E <u>Exterior</u> Refix downpipe to spouting at area 6 Replace spouting at north wall where required Repair window sill at west wall by area 6 <u>Interior</u> Area 6 Replace borer infested wall linings Replace borer infested cubicle door Repair holes in plaster wall linings Area 7 Repair holes in plaster wall linings <u>Structural</u> Strengthen building to MWD standards <u>Mechanical</u> Provide thermostat and time clock control to all heaters and permanently wire all heaters in area 8 Area 7 Provide heating to state school standards							

+ E4

ACREED PHASING OF WORK TO BE COMPLETED BY

BLOCK E (continued)ElectricalArea 7

Upgrade lighting to state school standards

Area 8

Sleeve bare earth wires in the switchboard

Area 9

Replace existing socket outlets with modern wall mounted type and install additional socket for 'ZIP' heater

Provide batten holder with skirt in main entrance and replace broken flood light lamp

Fire ProtectionArea 7

Provide panic bolt on main doors

Provide emergency lighting system

BLOCK FExterior

Replace rusted spouting at north wall

Paint roof

InteriorArea 11

Varnish recently replaced plywood

Area 14

Replace broken light shade

Area 16

Treat for mould and repaint ceiling

Mechanical

Upgrade heating to state school standard in areas 12, 13 and 14

Electrical

Upgrade lighting to state school standards in areas 12, 13 and 14

Area 13

Secure heater brackets where required

Replace missing power outlet in area 14

13.10.82 31.3.84 31.3.85 31.3.86 31.3.87 31.3.88

x

x

x

x

x x

x

x

x

x

x

x

x

x

x

AGREED PHASING OF WORK TO BE COMPLETED BY

	13.10.82	31.3.84	31.3.85	31.3.86	31.3.87	31.3.88
BLOCK F (continued)						
<u>Fire Protection</u>						
Areas 12, 13, 14						
Replace locks on doors with a type that can be opened from the inside without the use of a key	x					
<u>Linings</u>						
Line wall adjacent to stove in area 12 with FRR material to give a ½ hour FRR		x				
Extinguishing Equipment						
Replace hose reel in area 16 with 25m of 12.5m hose pipe		x				
BLOCK G						
<u>Exterior</u>						
Replace rotted wooden coverboards on roof with galvanised barge flashings						
Refix flashing at old Bell Tower		x				
Completely repaint exterior (half cost to be met by Education Board)		x				
Replace rusted spouting and downpipes						
Replace rusted ridging where necessary		x				
Replace rusted roofing iron		x				
Replace rusted roof over entry porch on south wall		x				
Repair damaged outside seating		x				
<u>Interior</u>						
Area 17						
Replace two blinds						
Area 18						
Repair and seal cracks at side of ramp		x				
<u>Mechanical</u>						
Areas 17, 20 and 21						
Upgrade heating to state school standards			x			
<u>Electrical</u>						
Sleeve bare earth wires in switchboard and replace old VIR circuit wiring						
Upgrade lighting to state school standards in areas 17, 20 and 21		x				
Area 20						
Repair power point faulty earth connection		x				

+ 23

-22-

AGREED PHASING OF WORK TO BE COMPLETED BY

	13.10.82	31.3.84	31.3.85	31.3.86	31.3.87	31.3.88
<p><u>BLOCK G (continued)</u></p> <p>Areas 17, 20 and 21</p> <p>Provide isolaters adjacent to heaters</p> <p><u>Fire Protection</u></p> <p><u>Means of Egress</u></p> <p>Provide alternative egress from area 17</p> <p>Remove lock on door between areas 20 and 21</p> <p>Extinguishing Equipment</p> <p>Refix hose reel to wall in area 24 and provide a second reel near area 23 if required</p>	x x	x				
<p><u>BLOCK J</u></p> <p><u>Exterior</u></p> <p>Replace rotted base timber and weatherboards</p> <p>Repair window on south wall</p> <p>Replace rusted spouting and downpipe at each wall</p> <p>Refix downpipe at west wall</p> <p>Remove rust from roof</p> <p>Completely repaint exterior</p>		x x x x x x x				
<p><u>BLOCK K</u></p> <p><u>Exterior</u></p> <p>Replace rotted wooden cover boards</p> <p>Remove rust from roof</p> <p>Replace rusted spouting and downpipe</p> <p>Repair and replace rotted and broken weatherboards and facings</p> <p>Repaint exterior completely</p>		x x x x x				
<p><u>ELECTRICAL GENERAL</u></p> <p>Disconnect and remove disused cable from power pole adjacent to Block C</p>		x				
<p><u>FIRE PROTECTION GENERAL</u></p> <p>Install a manual fail safe fire alarm system as follows:</p> <p>BLOCK D - Area 5 - Call box and bell</p> <p>BLOCK E - Area 7 & 8 - Call box and bell</p> <p>BLOCK F - Area 16 - Call box and bell</p> <p>BLOCK G - Area 24 - Call box and bell near area 23</p> <p>BLOCK G - Area 24 - Call box and bell near area 17</p>	x x x x x x					

AGREED PHASING OF WORK TO BE COMPLETED BY

13.10.82	31.3.84	31.3.85	31.3.86	31.3.87	31.3.88
	x				
		x			
		x		x	
				x	

FURNITURE AND EQUIPMENT

Upgrade furniture to Education Board standards

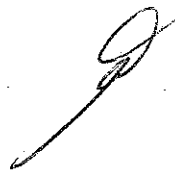
BUILDING REQUIREMENTS

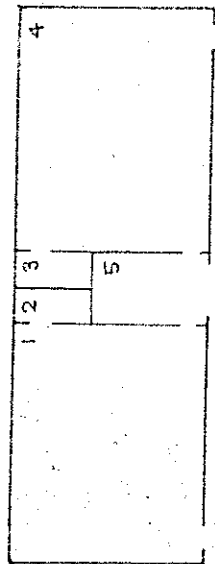
Provide by new construction or remodelling the following:

- Resource work room of 14m²)
- Principals office of 11m²)
- School office of 8m²)
- Casualty/sickroom of 9m²)
- Storage of 5m²)
- 1 STDU for female staff toilets)
- 1 WC and 1 WHB for male staff toilets)
- 8 WC's, 1 STDU and 4 WHB's for girls toilets)
- 6 WC's and 3 WHB's for boys toilets)

Demolish Block I

+ 6-9.

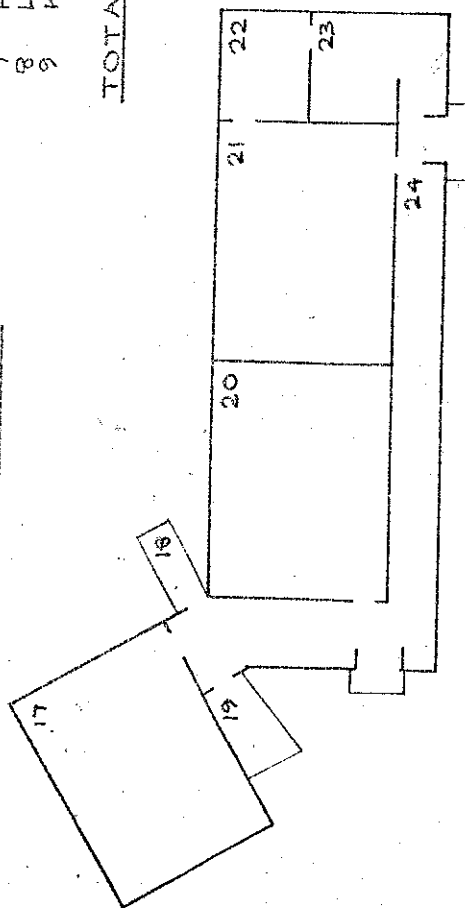




BLOCK D

ROOM	AREA
1 CLASSROOM	67.23 m ²
2 STORE	3.36 m ²
3 CLASSROOM	3.92 m ²
4 Foyer	70.37 m ²

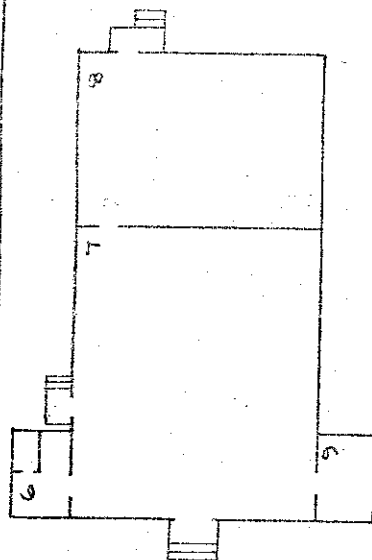
TOTAL AREA = 168.84 m²



BLOCK G

ROOM	AREA
17 CLASSROOM	57.67 m ²
18 RAMP	
19 RAMP	
20 CLASSROOM	61.15 m ²
21 CLASSROOM	61.01 m ²
22 OFFICE	15.57 m ²
23 OFFICE	22.52 m ²
24 CORRIDOR	

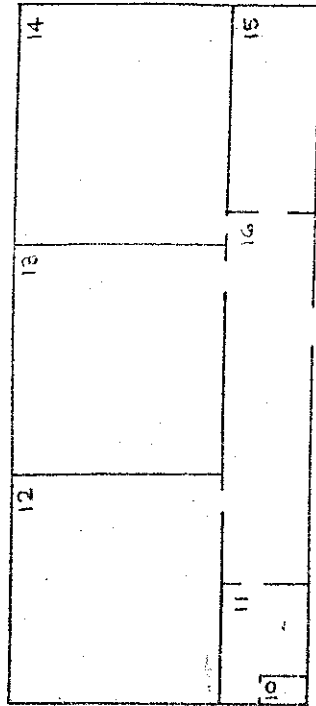
TOTAL AREA = 319.04 m²



BLOCK E

ROOM	AREA
6 TOILET	112.01 m ²
7 HALL	61.58 m ²
8 LIBRARY	5.77 m ²
9 KITCHEN	

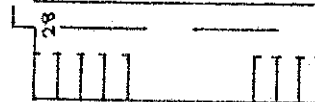
TOTAL AREA = 193.39 m²



BLOCK F

ROOM	AREA
10 TOILET	12.29 m ²
11 SICK BAY	70.63 m ²
12 CLASSROOM	71.15 m ²
13 CLASSROOM	71.55 m ²
14 CLASSROOM	23.03 m ²
15 STAFF ROOM	
16 CLOAK ROOM	

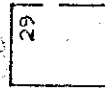
TOTAL AREA = 320.40 m²



BLOCK J

ROOM	AREA
28 TOILETS	

TOTAL AREA = 42.81 m²



BLOCK J

ROOM	AREA
29 SHED	

TOTAL AREA = 11.81 m²



BLOCK K

ROOM	AREA
30 STORE	

TOTAL AREA = 3.71 m²

DEPARTMENT OF EDUCATION

buildings division: integration of private schools

School: ST JOSEPH'S SCHOOL VHAKATANE

Drawing No:

EIP 190 02

Date:

15 OCTOBER 1980

Revision

Scale:

1:300

SHEET 2 OF 2 SHEETS

Drawn: JES

FOURTH SCHEDULE

Schedule of staff appointments to St. Joseph's School, WHAKATANE, under Sections 65(1) & 66 of the Private Schools Conditional Integration Act 1975 being special positions relating to the special character of the School

Total Staff Entitlement of School	Principal to be Appointed under S.65 (1) (a) Private Schools Conditional Integration Act 1975	Number of Staff to be so Appointed	Director of Religious Studies to be Appointed under S.65 (1) (b) Private Schools Conditional Integration Act 1975 Scale A or B1 or Higher	Senior Teacher Junior Classes to be Appointed under S.65 (1) (d) Private Schools Conditional Integration Act 1975	Number of Staff to be so Appointed	Religious Instruction Positions of Importance Number of other teachers to be Appointed under S.65 (1) (c) of Private Schools Conditional Integration Act 1975	Deputy Principal to be Appointed under S.66 Private Schools Conditional Integration Act 1975 Number of Staff to be so Appointed

Column 1	Column 2	Column 3	Column 4	Column 5	Column 6
1	1	-	-	-	-
2	1	-	-	1	-
3	1	-	-	1	-
4	1	-	-	2	-
5	1	1	-	1	1
6	1	1	-	2	1
7	1	1	1	2	1
8	1	1	1	2	1
9	1	1	1	2	1
10	1	1	1	3	1
11	1	1	1	3	1
12	1	1	1	4	1
13	1	1	1	4	1
14	1	1	1	5	1
15	1	1	1	6	1
16	1	1	1	7	1
17	1	1	1	7	1
18	1	1	1	7	1
19	1	1	1	8	1
20	1	1	1	8	1
21	1	1	1	9	1
22	1	1	1	9	1
23	1	1	1	9	1
24	1	1	1	10	1
25	1	1	1	10	1
26	1	1	1	11	1
27	1	1	1	11	1
28	1	1	1	12	1
29	1	1	1	12	1
30	1	1	1	13	1

NOTES:

- The above Schedule has been prepared for use when the staffing entitlement of the School alters at any time during the currency of this Deed of Agreement to enable the parties hereto by reference to the total staffing entitlement of the School in Column (1) hereof to determine the number of teaching positions at the School which in terms of Section 65 (1) (a), (b), (c) and (d) of the Private Schools Conditional Integration Act 1975 and Clauses 14, 15, 17 and 18 of this Deed carry a responsibility for Religious instruction and require a willingness and ability to take part in Religious instruction or in terms of Section 66 of the Private Schools Conditional Integration Act 1975 require a particular capability in the teacher as described in Clause 19 of the Deed of Agreement. The Schedule to be read across from left to right.
- Column (5). Section 65 (1) (c) must apply to the number of other positions indicated in the Column and may be made up of teachers appointed under the Initial Appointments Scheme and or other permanent appointments. It is recommended that where the School has a total staffing entitlement of up to eleven there should be at least one appointed as a permanent Scale A Teacher and in schools with a total staffing entitlement of between twelve and fifteen there should be two appointed as permanent Scale A Teachers and in schools with a total staffing entitlement of between fifteen and twenty-one there should be at least three appointed as permanent Scale A Teachers.
- The School as at the effective date hereof has a staffing entitlement of Nine (9) teachers.