

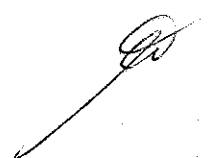
THIS DEED OF AGREEMENT is made the 28 day of October
One thousand nine hundred and eighty one (1981)
BETWEEN THE ROMAN CATHOLIC BISHOP OF THE DIOCESE OF
HAMILTON a "Corporation Sole" (hereinafter
with his successors referred to as "the Proprietor")
of the first part
and HER MAJESTY THE QUEEN acting by and through the
Minister of Education (hereinafter referred to as
"the Minister") of the second part

WHEREAS

- A The Proprietor is the owner of St. Mary's School,
PUTARURU
(hereinafter referred to as "the School")
- B The School is a Roman Catholic Primary School for
boys and girls from new entrants to form two
offering Education with a Special Character.
- C The School was established in 1944 and up to the effective
date of integration was in part staffed by members of the
Roman Catholic Religious Order of Women, known as the Sisters
of the Society of Mary. The said Order will continue
after the effective date of integration to offer teaching
staff to the school, so long as it has members available
for that purpose.
- D The Minister and the Proprietor have agreed to enter
into this Deed of Agreement pursuant to the Private
Schools Conditional Integration Act 1975, whereby the
School is to be established as an integrated school.

NOW THIS DEED OF AGREEMENT WITNESSETH THAT IT IS HEREBY
COVENANTED AGREED AND DECLARED BY AND BETWEEN THE PARTIES
HERETO AS FOLLOWS :-

1. THAT the Minister and the Proprietor HEREBY AGREE that
the School is to become an integrated School pursuant to the
Private Schools Conditional Integration Act 1975.

E.S. 

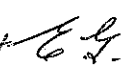

2. THE School's Special Character as is hereinafter described, shall incorporate the Education with a Special Character as provided in the School AND IT IS HEREBY AGREED AND DECLARED that the School shall at all times in the future be conducted and operated so as to maintain and preserve the School's Special Character and these presents shall be interpreted so as to maintain and preserve the Special Character of the School.

3. ON behalf of the Proprietor it is hereby agreed that:

(a) The Proprietor is the owner of all the land and improvements more particularly described in the First Schedule hereto (hereinafter referred to as "the Proprietor's land") and of which for the purposes of this Deed of Agreement, the School premises form part only. The School premises for the purposes of this Deed of Agreement being the land and improvements more particularly described in the Second Schedule hereto (hereinafter referred to as "the School premises").

(b) The Proprietor shall set apart and appropriate as owner all the School premises and all the chattels and other assets of the Proprietor associated with the School exclusively for the purposes of the School as an integrated School, so that the Controlling Authority of the School shall have the exclusive right to the possession and use of the School premises and chattels

- PROVIDED THAT -



- (i) At the request of the Proprietor, the School Committee may grant the use of the School premises and chattels to the Proprietor or other person or persons at any time when the School premises and chattels are not required for school purposes and the School Committee shall not unreasonably or arbitrarily withhold its consent. The School Committee may require the Proprietor or other person or persons to pay a reasonable fee to the School Committee as a condition of such use.
- (ii) With the consent of the Proprietor, the School Committee may grant the use of the School premises and chattels to other person or persons at any time when the School premises and chattels are not required for School purposes and the Proprietor shall not unreasonably or arbitrarily withhold his consent. The School Committee may require any such person or persons to pay a reasonable fee to the School Committee as a condition of such use.
- (c) The Proprietor shall accept and meet the liability for all mortgages, liens and other charges upon the land and buildings comprising the School premises.
- (d) The Proprietor shall plan, pay for, and execute the improvements described in the Third Schedule hereto, to the School premises so as to bring the School buildings and associated facilities forming

69.



part of the School premises up to the minimum standard for comparable State Schools prevailing at the effective date of this Deed of Agreement. Such improvements are to be carried out in accordance with the dates specified against such improvements in the Third Schedule hereto. The Proprietor shall upon completion of any improvements to electrical services described in the Third Schedule hereto arrange for the local Electrical Supply Authority to inspect the School premises in terms of Regulation 45 of the Electrical Supply Regulations 1976.

- (e) The Proprietor shall plan, execute and pay for such capital works and associated facilities at the School as may be approved or required, from time to time, by the Minister pursuant to Section 40 (2) (d) of the Private Schools Conditional Integration Act 1975.
- (f) The Proprietor may own or hold upon trust, and control and maintain, any land, buildings and associated facilities that, although not part of the integrated School premises in terms of this Deed of Agreement are regarded by the Proprietor as appropriate to maintain the Special Character of the School.
- (g) The Proprietor shall insure all the buildings forming part of the School premises and the Proprietor's chattels (if any) owned or held upon trust for the purposes of the School and the other assets owned by the Proprietor for the purposes of the School against risks


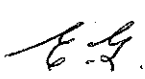
E.L.



normally insured against, in some responsible insurance office in New Zealand, and further acknowledges the obligation on him created by Section 40 (2) (h) of the Private Schools Conditional Integration Act 1975.

- (h) No person employed at the School and paid for his services in whole or in part out of moneys appropriated by Parliament, shall be paid by the Proprietor or his servants or agents any remuneration additional to that provided for by the Private Schools Conditional Integration Act 1975 or shall be granted or permitted any condition of service more favourable than that permitted in the case of a person employed in a comparable position in a State School PROVIDED HOWEVER that a teacher to whom the provisions of Section 71 of the Private Schools Conditional Integration Act 1975 apply, shall continue to be paid no less than the same salary, and be accorded the same status, as he received or was accorded on the day before the effective date of the integration of the School.

4. THE land and buildings constituting the School premises are subject to the mortgages, debts, liens, encumbrances, easements, licences, restrictions and other matters which affect the title to or enjoyment of the land and have the appurtenances or benefits attaching to the land more particularly described in the First Schedule hereto.



5. THE Special Character of the Schools is that it is a Roman Catholic School for boys and girls established by the Roman Catholic community of the Diocese of Hamilton, which promotes and supports the School and of which the School is part, to provide and to continue to provide Education with a Special Character, that is to say:-

The School is a Roman Catholic School in which the whole School community through the general School programme and in its Religious instructions and observances, exercises the right to live and teach the values of Jesus Christ. These values are as expressed in the Scriptures and in the practices, worship and doctrine of the Roman Catholic Church, as determined from time to time by the Roman Catholic Bishop of the Diocese of Hamilton.

6. THE Proprietor of the School subject to the provisions of this Deed of Agreement :

- (a) Shall continue to have the responsibility to supervise the maintenance and preservation of the Education with a Special Character provided by the School;
- (b) Shall continue to have the right to determine from time to time what is necessary to preserve and safeguard the Special Character of the Education provided by the School and described in this Deed of Agreement;

E.G.



(c) May invoke the powers conferred upon him by the Private Schools Conditional Integration Act 1975, if in the opinion of the Proprietor the Special Character of the School as defined and described in this Deed of Agreement has been or is likely to be jeopardised or the Education with a Special Character provided by the School as defined and described in this Deed of Agreement is no longer preserved and safeguarded.


7. (a) THE Controlling Authority of the School shall be the Education Board of the South Auckland Education District as constituted pursuant to Section 15 of the Education Act 1964.

(b) The School shall be managed by a School Committee constituted pursuant to the provisions of Section 26 of the Private Schools Conditional Integration Act 1975. The School Committee shall consist of :

(i) One (1) member to be appointed by the Proprietor of the School;

(ii) Six (6) members to be elected by the parents of children attending the School PROVIDED HOWEVER that in the event of the School roll altering at any time then the number of such members shall be fixed by ascertaining the number of members that a State School Committee would have, based on the current School roll in accordance with the provi-

E. G.



sions of the School Committees Administration Regulations 1965 and subtracting one from that number.

- (c) Any election conducted pursuant to Section 26 of the Private Schools Conditional Integration Act 1975 shall be conducted as nearly as possible in the manner prescribed by the School Committees Administration Regulations 1965 and any regulations made in amendment thereof or in substitution therefor and the provisions of those regulations shall, with any necessary modifications, be applied accordingly.
- (d) The control and management of the School shall be exercised subject to the provisions of Section 25 (6) of the Private Schools Conditional Integration Act 1975.

8. THE School had a roll of one hundred and eighty-one (181) pupils as at the 30th September 1980 being the year when the roll figures were last compiled. It is agreed by and between the parties hereto that the maximum roll of the School shall be one hundred and sixty-three (163) pupils

9. THE Proprietor agrees that pursuant to Paragraphs (d) and (e) of Clause 3 of this Deed of Agreement he will bring the School up to the minimum standard of accommodation laid down from time to time by the Director-General for a comparable State School.

E.L.

[Signature]

10. (a) PREFERENCE of enrolment at the School under Section

29 (1) of the Private Schools Conditional Integration Act 1975 shall be given only to those children whose parents have established a particular or general religious connection with the Special Character of the School and the Controlling Authority shall not give preference of enrolment to the parents of any child unless the Proprietor has stated that those parents have established such a particular or general religious connection with the Special Character of the School.

(b) In accordance with Section 7 (6) (h) of the Private Schools Conditional Integration Act 1975, unless the Proprietor and the Controlling Authority otherwise agree and subject to places being available, the number of pupils whose parents do not have a preference of enrolment at the School in accordance with the provisions of Section 29 (1) of the Private Schools Conditional Integration Act 1975 shall be limited at all times to ~~eight~~ (8) pupils out of the total roll of the School and the Controlling Authority shall not enrol more than that number PROVIDED THAT to maintain and preserve the Special Character of the School the Controlling Authority in classifying such pupils so enrolled shall endeavour to reasonably distribute them through the range of classes offered by the School.

(c) Wherever any difficulty arises related to enrolment at


EG.

the School in terms of Section 54 of the Private Schools Conditional Integration Act 1975, it may be referred to the Controlling Authority of the School pursuant to the provisions of the said section.

11. IT is agreed by and between the parties hereto that as Religious observances and Religious instruction form part of the Education with a Special Character provided by the School, Religious observances and Religious instruction in accordance with the determination made from time to time by the Roman Catholic Bishop of the Diocese of Hamilton shall continue to form part of the School programme in accordance with Sections 31 and 32 of the Private Schools Conditional Integration Act 1975.


12. THE Proprietor, together with his servants, agents and licensees shall, subject to the proviso to Section 40 (2) (i) of the Private Schools Conditional Integration Act 1975, have at all reasonable times access to the School to ensure that the Special Character of the School is being maintained.

13. THE Proprietor, together with his servants, agents and licensees, shall have at all reasonable times access to the land and buildings of the School constituting the School premises sufficient to enable him to exercise the powers and carry out the responsibilities vested in him and imposed on him by the Private Schools Conditional Integration Act 1975 and by this Deed of Agreement.

E.H. 

14. AN advertisement for the position of Principal of the School shall in accordance with Section 65 (1) (a) of the Private Schools Conditional Integration Act 1975 state that a willingness and ability to take part in Religious instruction appropriate to the Special Character of the School shall be a condition of appointment. Any person so appointed to the position of Principal shall accept these requirements as a condition of appointment. The Principal so appointed shall accept and recognise a responsibility to maintain and preserve the Special Character of the School.

15. THERE shall be a position at the School to be designated Director of Religious Studies in accordance with Section 65 (1) (b) of the Private Schools Conditional Integration Act 1975, which position shall be part of the normal staffing entitlement of the School as established by Regulations made under the Education Act 1964 and an advertisement for that position shall state that a willingness and ability to take part in Religious instruction appropriate to the Special Character of the School shall be a condition of appointment. Any person so appointed to the position of Director of Religious Studies shall accept these requirements as a condition of appointment. The Director of Religious Studies shall give guidance and provide effective leadership in Religious instruction and observances throughout the School PROVIDED HOWEVER that in the event of the staffing entitlement of the School altering at any time during the currency of this Deed of Agreement then the position of Director of Religious Studies shall be determined in accordance with the then current staffing entitlement of the School under the Education Act 1964 and Regulations made thereunder and as is more particularly described in the Fourth Schedule hereto.


E.G. 

16. A person appointed as aforesaid to the position of Director of Religious Studies at the School shall undertake such teaching duties, if any, as may be required by the Principal of the School.

17. IN the event of the staffing entitlement of the School altering at any time during the currency of this Deed of Agreement, whereby the School becomes entitled to a position of Senior Teacher Junior Classes, it is agreed pursuant to Section 65 (1) (d) of the Private Schools Conditional Integration Act 1975 that the Controlling Authority of the School in advertising the position of Senior Teacher Junior Classes shall state that a willingness and ability to take part in Religious instruction appropriate to the Special Character of the School shall be a condition of appointment. Any person so appointed to the position of Senior Teacher Junior Classes shall accept these requirements as a condition of appointment.

18. THERE shall be two (2) other teaching positions at the School which in accordance with Sections 65 (1) (c) of the Private Schools Conditional Integration Act 1975, shall be positions of importance carrying a responsibility for Religious instruction and an advertisement for those positions shall state that a willingness and ability to take part in Religious instruction appropriate to the Special Character of the School shall be a condition of appointment. Any person so appointed to these positions shall accept these requirements as a condition of appointment PROVIDED HOWEVER that in the event of the staffing entitlement of the School altering at any time during the currency of this Deed of Agreement then the number of teaching positions

E.G.





designated under Section 65 (1) (c) of the Private Schools Conditional Integration Act 1975 as positions of importance carrying a responsibility for Religious instruction shall be determined in accordance with the then current staffing entitlement of the School under the Education Act 1964 and Regulations made thereunder and as is more particularly described in the Fourth Schedule hereto.

19. THE position of Deputy Principal at the School is agreed pursuant to Section 66 of the Private Schools Conditional Integration Act 1975 to be a special position that requires particular capabilities in the teacher appointed, namely to assist in planning and organising the courses and programmes at the School to ensure that they reflect the Special Character of the School and an advertisement for the position of Deputy Principal shall state that possession of these capabilities shall be a condition of appointment. Any person so appointed to the position of Deputy Principal shall accept these requirements as a condition of appointment.

20. THE Proprietor may with the consent of the Controlling Authority in accordance with Section 69 (1) of the Private Schools Conditional Integration Act 1975 arrange for any retired teacher to undertake voluntary tasks to assist in the School with the teaching of Religious observances and Religious instruction appropriate to the Special Character of the School.

21. IT is agreed by and between the parties hereto that as Religious observances and Religious instruction form part of the Education with a Special Character provided by the School

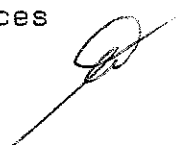



the Proprietor may employ any person as a Chaplain or otherwise for the purposes of Religious observances or instruction and the provisions of Section 69 (2) and (3) of the Private Schools Conditional Integration Act 1975 shall apply.

22. THE Proprietor of the School shall have the right to enter into an Agreement with the parents or other persons accepting responsibility for the education of a child providing that, as a condition of enrolment and attendance of that child at the School, the parents or other persons shall pay attendance dues established in respect of the School or group of Integrated Schools owned by the Proprietor or Proprietors of other Roman Catholic Integrated Schools at such rates and subject to such conditions as may be approved from time to time by the Minister, by notice in the New Zealand Gazette in accordance with Section 36 of the Private Schools Conditional Integration Act 1975.

23. THE School is a Primary School for boys and girls from new entrants to form two and shall remain so until such time as an agreement to a change in this organisation of the School is reached between the Proprietor and the Minister and the parties hereto enter into a supplementary Deed of Agreement to give effect thereto.

24. WHERE any of the costs associated with the conduct of the Proprietor's land and buildings that are not part of the School premises cannot be separated from the costs associated with the operation of the School premises, the Proprietor and the school committee and/or the Controlling Authority shall contribute to such costs according to their respective use of the services and facilities.



25. IT is acknowledged by and between the parties hereto pursuant to Clause 24 hereof that certain of the services and facilities on or serving the Proprietor's land and buildings thereon are used in common for the purpose of the School premises and as is more particularly delineated on the plan forming part of the Second Schedule hereto. In particular the power supply, the water supply and the sewerage and drainage systems are all used in common and the costs of maintaining such services and facilities shall be apportioned as provided in Clause 24 hereof. If practicable the power supply to the School premises shall be separately metered at the expense of the Proprietor. Where such services or facilities are wholly or partly situated outside the School premises the Proprietor will continue to make such services or facilities available to the School premises.

26. THE Proprietor shall not engage any teachers between the date of execution of this Deed of Agreement and the effective date of integration other than those whose names have already been notified by the Proprietor to the Director-General of Education without first obtaining the consent of the Director-General.

27. THE Proprietor shall reimburse the Minister for the payment of salary, wages and proportion of holiday pay due and paid by the Minister in respect of the 1981 School year to any person employed at the School up to the effective date of integration. PROVIDED THAT the Proprietor shall not be required to reimburse the Minister in respect of any salary, wages and holiday pay which has been paid to teachers up to the date of integration by the Minister in accordance with the terms of the Minister's letter of 4 December 1980 to Archbishop Williams.

6.9.

28. THE Minister shall be responsible only for the normal maintenance of the retaining walls on the School premises and all other expenditure in respect of the retaining walls on the School premises shall be the responsibility of the Proprietor.

29. THE Minister shall subject to Clause 3 (d) and (e) of this Deed of Agreement after the effective date hereof maintain the School premises and the associated facilities in a state of repair order and condition as for a comparable State School under the same Controlling Authority and provide for the maintenance of the chattels as though the School were a State School. The School shall be entitled to such furniture and equipment as the Controlling Authority supplies from time to time to comparable State Schools.

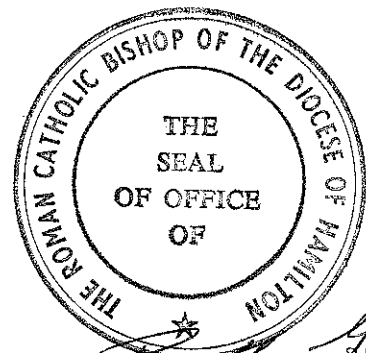
30. THE effective date of this Deed of Agreement shall be the 28th day of October, 1981.

31. ON and after the effective date specified in this Deed of Agreement the School shall be an integrated school in terms of the Private Schools Conditional Integration Act 1975.

IN WITNESS WHEREOF these presents have been executed the day and year first hereinbefore written.

6-4

9



SIGNED by EDWARD RUSSELL GAINES

The ROMAN CATHOLIC BISHOP OF THE

DIOCESE OF HAMILTON and sealed + *Edward Russell Gaines*

with his Seal of Office in the

presence of :-

7.7.49 (Catholic Priest)
53 A Silindale Road
Hamilton.

SIGNED FOR AND ON BEHALF OF HER MAJESTY

THE QUEEN by MERVYN LANGLOIS WELLINGTON

Minister of Education in the presence of:-

M. J. Fokker
12 Hahira Road
Hataitai
Wellington.

(Private Secretary)

FIRST SCHEDULE

Description of total land buildings and other improvements comprising the Proprietor's land of which the School premises form part.

THE PROPRIETOR'S LAND All that Land, School buildings and other improvements owned by The Roman Catholic Bishop of the Diocese of Hamilton, situate at Putaruru, New Zealand, delineated in green on the annexed plan, being known as Saint Mary's School, Putaruru and being more particularly described as follows:

FIRST all that Freehold parcel of land containing 3925 square metres more or less being part Section 3 Block V Putaruru Village and being all the land in Certificate of Title Volume 26A folio 1220 (South Auckland Registry)

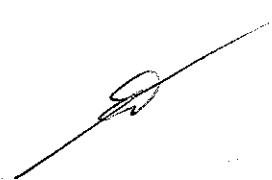
SECONDLY all that Freehold parcel of land containing 7082 square metres more or less being Section 9 and part Section 8 Block III Village of Putaruru and being all the land in Certificate of Title Volume 6D folio 918 (South Auckland Registry)

Fencing Covenant contained in Transfer S364006 (affects part Lot 8 only).

THIRDLY all that Freehold parcel of land containing 1922 square metres more or less being part Section 8 Block IV Village of Putaruru, Lot 3 on Deposited Plan 23158 and Lot 3 on Deposited Plan S.26591 and being part Section 4 Block IV Village of Putaruru and being all the land in Certificate of Title Volume 25B folio 94 (South Auckland Registry)

Subject to Section 351D(3) Municipal Corporations Act 1954.

Subject as to Lot 3 Plan 23158 and Lot 3 Plan S.26591 to the same reservations and conditions as are imposed in the case of leases by Section 206 Land Act 1924.

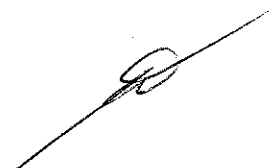
E.G. 

FOURTHLY all that Freehold parcel of land containing 3035 square metres more or less being Section No. 19 (nineteen) Block IV (four) in the Village of Putaruru and being all the land in Certificate of Title Volume 159 folio 177 (South Auckland Registry).

FIFTHLY all that Freehold parcel of land containing 2023 square metres more or less being part Section 10 Block III Village of Putaruru and being all the land in Certificate of Title Volume 6D folio 1129 (South Auckland Registry).

There is a debt owing to the Hamilton Advances Account (Diocesan Development Fund) of the Roman Catholic Diocese of Hamilton.

E.G.



SECOND SCHEDULE

Description of land buildings and other improvements comprising the School premises

THE SCHOOL PREMISES

All that part of the Proprietor's land as described in the First Schedule hereto, delineated in red on the annexed plan of the Proprietor's land, which plan forms part of this Schedule TOGETHER WITH all the School buildings and other improvements thereon SAVE AND EXCEPT Block F more particularly delineated in blue on the annexed plan together with a reservation in favour of those excepted portions of full rights of access inter se and of ingress and egress to and from those excepted portions over the access thereto from and to Mackenzie Street, Putaruru.

E.G.



ST MARY'S SCHOOL PUTARURU

THIRD SCHEDULE

WORKS TO BE CARRIED OUT BY THE PROPRIETOR IN RELATION TO THE INTEGRATED SCHOOL

These works are to be planned, executed and paid for by the Proprietor subject to the provisions of this schedule in relation to the buildings and associated facilities to bring them up to the minimum standard for a comparable state school.

In those cases where the words "half cost to be met by education board" appear in relation to particular works, the buildings supervisor of the South Auckland Education Board shall draw up the specifications for such particular works and the proprietor shall obtain his approval to the contractor and to the price before commencing such works. All work is to be carried out by competent tradesmen or in a workmanlike manner to the South Auckland Education Board standards.

AGREED PHASING OF WORK TO BE COMPLETED BY:

	28/10/81	31/3/82	31/3/83	31/3/84	31/3/85	31/3/86
SITE						
Reseal entryway from MacKenzie Street						
Patch holes in concrete area north of Block B where cycle racks removed		x	x			
Provide and install sufficient additional cycle stands for bicycles brought to the school		x				
BLOCK A						
Exterior						
Repaint including new roof to the South Auckland Education Board specifications						
Refix downpipe at north wall						
Reline and refix spouting on porch						
Replace missing base vents						
Repair fixed seating north wall						
Repair drinking fountains						
Replace broken section of fibrolite downpipe at south wall						
Interior						
Areas 15, 16, 17						
Patch leaks in ceilings						

121

182

ST MARY'S SCHOOL PUTARURU

AGREED PHASING OF WORK TO BE COMPLETED BY:

BLOCK A INTERIOR AREAS 15,16417 (CONTINUED)	28.10.81	31/3/82	31/3/83	31/3/84	31/3/85	31/3/86
Repaint ceiling and walls to dado height			x			
Revarnish existing varnish work			x			
Area 17						
Replace chalkboard		x				
Uncover connecting door to area 16 and make good		x				
Provide additional wall mounted power outlets to						
Education Board requirements		x				
Redecorate						
Areas 19 and 20			x			
Repair ceilings						
Redecorate		x				
Electrical						
Main switchboard						
Sleeve bare earthwires		x				
Area 9						
Replace broken light fitting above basement entrance						
Areas 15, 16, 17		x				
Wire the wall mounted infra red heaters into the heating						
circuit in the classrooms and control by the room						
thermostat						
Area 18, 20		x				
Upgrade lighting to state school standards						
Fire Protection						
Provide alternative egress from areas 16 and 17	x					
Install a smoke stop door and partition across the						
corridor between the wall line of areas B13 and door of						
area A15						
Line the ceiling of areas A8 and 9 with an approved						
material to give a ½ hour FRR	x					
Line the wall separating area 9 from the underfloor space						
with a material giving ½ hour FRR and fill in existing		x				
doors						

TEA

28.10.81	31/3/82	31/3/83	31/3/84	31/3/85	31/3/86
x	x				
BLOCK A FIRE PROTECTION (CONTINUED)					
Remove articles from underfloor space					
Provide and install a hose reel with 25m x 12mm hose in the corridor area 21 to replace 3 existing water/gas extinguishers					
BLOCK B					
Exterior					
Repaint to SAEB specifications					
Interior					
Area 1					
Redecorate					
Area 2					
Repaint ceiling and woodwork around windows					
Area 3					
Redecorate					
Area 5					
Redecorate					
Area 10					
Patch holes in wall and ceiling lining					
Area 12					
Replace damaged formica sinktop					
Area 13					
Provide additional wall mounted power outlets to Education Board requirements					
Structural					
Investigate bracing details and strengthen to MWD standards					
Electrical					
Sub-switch/board					
Provide earth bar sleeve to earth wires					
Area 21					
Provide additional wall mounted power point to prevent use of tap-ons and leads					

4

ST MARY'S SCHOOL PUTARURU

AGREED PHASING OF WORK TO BE COMPLETED BY:

	28.10.81	31/3/82	31/3/83	31/3/84	31/3/85	31/3/86
<p>BLOCK B ELECTRICAL (CONTINUED)</p> <p>Areas 5 and 13</p> <p>Upgrade lighting to state school standards</p> <p><u>Fire Protection</u></p> <p>Provide alternative egress direct to open air from areas 5 and 8 - this could be by doors direct to outside subject to structural considerations</p> <p>Enclose stairway between areas 3 and 14 with a smokestop partition to provide ½ hour FRR. The enclosure to be designed to incorporate the existing smokestop door near door to area A15</p>	x		x			
<p>BLOCK C</p> <p><u>Exterior</u></p> <p>Repaint including roof to SAEB specifications (half cost to be met by education board)</p> <p><u>Interior</u></p> <p>Area 24</p> <p>Redecorate</p> <p><u>Structural</u></p> <p>Investigate bracing details and strengthen to MWD standards</p>	x			x		
<p><u>Electrical</u></p> <p>Sub switch/board</p> <p>Sleeve earth wires</p> <p>Area 22</p> <p>Replace broken socket outlet</p> <p>Areas 22, 24, 25 and 27</p> <p>Upgrade lighting to state school standards</p> <p>Area 27</p> <p>Provide heating to state school standards</p> <p><u>Fire Protection</u></p> <p>Replace mortice lock in secondary egress door area C22 with hardware which can be opened from the inside without the use of a key</p>	x	x	x			

2.8

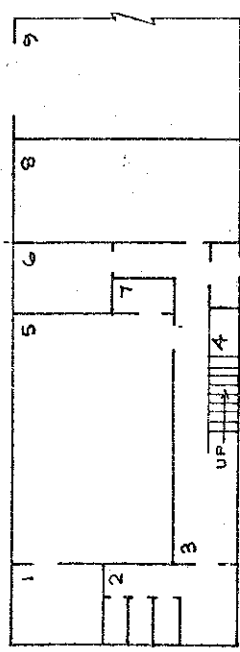
5

ST MARY'S SCHOOL PUTARURU

AGREED PHASING OF WORK TO BE COMPLETED BY:

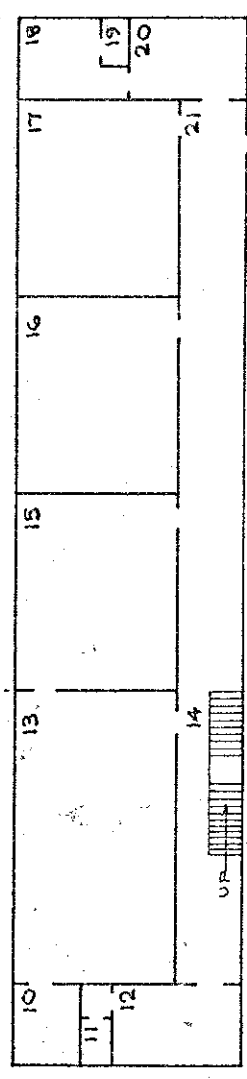
28.10.81	31/3/82	31/3/83	31/3/84	31/3/85	31/3/86
BLOCK E					
Repair entry doors to changing sheds and fit bracing					
Fire Protection - General	x				
Install a manual fire alarm system to MWD specifications					
Existing 3/4" hoses should be replaced by hoses with 25m of 12mm hose	x				
Relocate 2 of the existing water/gas extinguishers in area A21 to Block C					
BUILDING REQUIREMENTS					
Demolish Block F					
Demolish Block D					
Provide the following facilities be either remodelling or in new construction:			x		
Resource workshop				x	
Library multi-purpose room					
Staffroom kitchen					
Staff kitchen				x	
Principal's office					
School office					
Casualty/sickroom					
1 WC pan and 1 WHB for male staff toilets					
1 STDU in staff toilet area B11					
Boys - 3 WC stall urinal 3 WHB]					
Girls - 1 WC 1 WHB]					
Separate chemical store					
Filtration shed					
Replace Block C in 10-12 years					
Provide water to rooms A15, A16, A17 and B13					
Furniture and Equipment					
Upgrade to SAEB requirements					

28



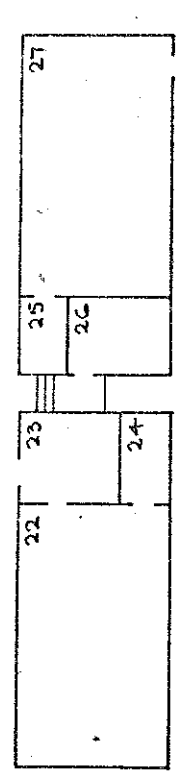
BLOCK B BASEMENT		
ROOM		AREA
1	STORE	9.8m ²
2	GIRLS TOILETS	
3	CORRIDOR	
4	STAIRS	
5	CLASSROOM	59.22m ²
6	OFFICE	10.14m ²
7	STORE	3.68m ²
TOTAL AREA = 139.5m ²		

BLOCK A BASEMENT		
ROOM		AREA
8	FILM ROOM	33.82m ²
9	ENTRANCE	
TOTAL AREA = 78.3m ²		



BLOCK B GROUND FLOOR		
ROOM		AREA
10	STORE	8.32m ²
11	STAFF TOILET	
12	STAFF ROOM	15.36m ²
13	CLASSROOM	72.59m ²
14	STAIRS	
TOTAL AREA = 134.1m ²		

BLOCK A GROUND FLOOR		
ROOM		AREA
15	CLASSROOM	44.53m ²
16	CLASSROOM	44.53m ²
17	CLASSROOM	44.53m ²
18	LIBRARY	10.2m ²
19	TOILET	
20	SICK BAY/BOOKSTORE	13.5m ²
21	CORRIDOR	
TOTAL AREA = 242.6m ²		



BLOCK C		
ROOM		AREA
22	CLASSROOM	59.0m ²
23	CLOAK ROOM	
24	STORE	5.04m ²
25	STORE	5.1m ²
26	CLOAK ROOM	
27	CLASSROOM	59.0m ²
TOTAL AREA = 171.76m ²		

DEPARTMENT OF EDUCATION
 buildings division: integration of private schools
 School: ST MARY'S SCHOOL, PUTARURU

Drawing No:	Scale:
EIP 188 02	1:300
Date:	SHEET 2 OF 3 SHEETS
13 OCTOBER 1980	Revision
	Drawn: <i>LES</i>

28

29

30

31

32

33

34

35

36

37

38

39

40

41

42

43

44

45

46

47

48

49

50

51

52

53

54

55

56

57

58

59

60

61

62

63

64

65

66

67

68

69

70

71

72

73

74

75

76

77

78

79

80

81

82

83

84

85

86

87

88

89

90

91

92

93

94

95

96

97

98

99

100

101

102

103

104

105

106

107

108

109

110

111

112

113

114

115

116

117

118

119

120

121

122

123

124

125

126

127

128

129

130

131

132

133

134

135

136

137

138

139

140

141

142

143

144

145

146

147

148

149

150

151

152

153

154

155

156

157

158

159

160

161

162

163

164

165

166

167

168

169

170

171

172

173

174

175

176

177

178

179

180

181

182

183

184

185

186

187

188

189

190

191

192

193

194

195

196

197

198

199

200

201

202

203

204

205

206

207

208

209

210

211

212

213

214

215

216

217

218

219

220

221

222

223

224

225

226

227

228

229

230

231

232

233

234

235

236

237

238

239

240

241

242

243

244

245

246

247

248

249

250

251

252

253

254

255

256

257

258

259

260

261

262

263

264

265

266

267

268

269

270

271

272

273

274

275

276

277

278

279

280

281

282

283

284

285

286

287

288

289

290

291

292

293

294

295

296

297

298

299

300

301

302

303

304

305

306

307

308

309

310

311

312

313

314

315

316

317

318

319

320

321

322

323

324

325

326

327

328

329

330

331

332

333

334

335

336

337

338

339

340

341

342

343

344

345

346

347

348

349

350

351

352

353

354

355

356

357

358

359

360

361

362

363

364

365

366

367

368

369

370

371

372

373

374

375

376

377

378

379

380

381

382

383

384

385

386

387

388

389

390

391

392

393

394

395

396

397

398

399

400

401

402

403

404

405

406

407

408

409

410

411

412

413

414

415

416

417

418

419

420

421

422

423

424

425

426

427

428

429

430

431

432

433

434

435

436

437

438

439

440

441

442

443

444

445

446

447

448

449

450

451

452

453

454

455

456

457

458

459

460

461

462

463

464

465

466

467

468

469

470

471

472

473

474

475

476

477

478

479

480

481

482

483

484

485

486

487

488

489

490

491

492

493

494

495

496

497

498

499

500

501

502

503

504

505

506

507

508

509

510

511

512

513

514

515

516

517

518

519

520

521

522

523

524

525

526

527

528

529

530

531

532

533

534

535

536

537

538

539

540

541

542

543

544

545

546

547

548

549

550

551

552

553

554

555

556

557

558

559

560

561

562

563

564

565

566

567

568

569

570

571

572

573

574

575

576

577

578

579

580

581

582

583

584

585

586

587

588

589

590

591

592

593

594

595

596

597

598

599

600

601

602

603

604

605

606

607

608

609

610

611

612

613

614

615

616

617

618

619

620

621

622

623

624

625

626

627

628

629

630

631

632

633

634

635

636

637

638

639

640

641

642

643

644

645

646

647

648

649

650

651

652

653

654

655

656

657

658

659

660

661

662

663

664

665

666

667

668

669

670

671

672

673

674

675

676

677

678

679

680

681

682

683

684

685

686

687

688

689

690

691

692

693

694

695

696

697

698

699

700

701

702

703

704

705

706

707

708

709

710

711

712

713

714

715

716

717

718

719

720

721

722

723

724

725

726

727

728

729

730

731

732

733

734

735

736

737

738

739

740

741

742

743

744

745

746

747

748

749

750

751

752

753

754

755

756

757

758

759

760

761

762

763

764

765

766

767

768

769

770

771

772

773

774

775

776

777

778

779

780

781

782

783

784

785

786

787

788

789

790

791

792

793

794

795

796

797

798

799

800

801

802

803

804

805

806

807

808

809

810

811

812

813

814

815

816

817

818

819

820

821

822

823

824

825

826

827

828

829

830

831

832

833

834

835

836

837

838

839

840

841

842

843

844

845

846

847

848

849

850

851

852

853

854

855

856

857

858

859

860

861

862

863

864

865

866

867

868

869

870

871

872

873

874

875

876

877

878

879

880

881

882

883

884

885

886

887

888

889

890

891

892

893

894

895

896

897

898

899

900

901

902

903

904

905

906

907

908

909

910

911

912

913

914

915

916

917

918

919

920

921

922

923

924

925

926

927

928

929

930

931

932

933

934

935

936

937

938

939

940

941

942

943

944

945

946

947

948

949

950

951

952

953

954

955

956

957

958

959

960

961

962

963

964

965

966

967

968

969

970

971

972

973

974

975

976

977

978

979

980

981

982

983

984

985

986

987

988

989

990

991

992

993

994

995

996

997

998

999

1000

1001

1002

1003

1004

1005

1006

1007

1008

1009

1010

1011

1012

1013

1014

1015

1016

1017

1018

1019

1020

1021

1022

1023

1024

1025

1026

1027

1028

1029

1030

1031

1032

1033

1034

1035

1036

1037

1038

1039

1040

1041

1042

1043

1044

1045

1046

1047

1048

1049

1050

1051

1052

1053

1054

1055

1056

1057

1058

1059

1060

1061

1062

1063

1064

1065

1066

1067

1068

1069

1070

1071

1072

1073

1074

1075

1076

1077

1078

1079

1080

1081

1082

1083

1084

1085

1086

1087

1088

1089

1090

1091

1092

1093

1094

1095

1096

1097

1098

1099

1100

1101

1102

1103

1104

1105

1106

1107

1108

1109

1110

1111

1112

1113

1114

1115

1116

1117

1118

1119

1120

1121

1122

1123

1124

1125

1126

1127

1128

1129

1130

1131

1132

1133

1134

1135

1136

1137

1138

1139

1140

1141

1142

1143

1144

1145

1146

1147

1148

1149

1150

1151

1152

1153

1154

1155

1156

1157

1158

1159

1160

1161

1162

1163

1164

1165

1166

1167

1168

1169

1170

1171

1172

1173

1174

1175

1176

1177

1178

1179

1180

1181

1182

1183

1184

1185

1186

1187

1188

1189

1190

1191

1192

1193

1194

1195

1196

1197

1198

1199

1200

1201

1202

1203

1204

1205

1206

1207

1208

1209

1210

1211

1212

1213

1214

1215

1216

1217

1218

1219

1220

1221

1222

1223

1224

1225

1226

1227

1228

1229

1230

1231

1232

1233

1234

1235

1236

1237

1238

1239

1240

1241

1242

1243

1244

1245

1246

1247

1248

1249

1250

1251

1252

1253

1254

1255

1256

1257

1258

1259

1260

1261

1262

1263

1264

1265

1266

1267

1268

1269

1270

1271

1272

1273

1274

1275

1276

1277

1278

1279

1280

1281

1282

1283

1284

1285

1286

1287

1288

1289

1290

1291

1292

1293

1294

1295

1296

1297

1298

1299

1300

1301

1302

1303

1304

1305

1306

1307

1308

1309

1310

1311

1312

1313

1314

1315

1316

1317

1318

1319

1320

1321

1322

1323

1324

1325

1326

1327

1328

1329

1330

1331

1332

1333

1334

1335

1336

1337

1338

1339

1340

1341

1342

1343

1344

1345

1346

1347

1348

1349

1350

1351

1352

1353

1354

1355

1356

1357

1358

1359

1360

1361

1362

1363

1

FOURTH SCHEDULE.

Schedule of staff appointments to St. Mary's School, PUTARURU under Sections 65(1) & 66 of the Private Schools Conditional Integration Act 1975 being special positions relating to the Special Character of the School

Total Staff Entitlement of School	Principal to be Appointed under S.65 (1) (a) Private Schools Conditional Integration Act 1975 Number of Staff to be so Appointed	Director of Religious Studies to be Appointed under S.65 (1) (b) Private Schools Conditional Integration Act 1975 Scale A or B1 or Higher	Senior Teacher Junior Classes to be Appointed under S.65 (1) (d) Private Schools Conditional Integration Act 1975 Number of Staff to be so Appointed	Religious Instruction Positions of Importance Number of other teachers to be Appointed under S.65 (1) (c) of Private Schools Conditional Integration Act 1975 Number of Staff to be so Appointed	Deputy Principal to be Appointed under S.66 Private Schools Conditional Integration Act 1975 Number of Staff to be so Appointed
-----------------------------------	--	---	--	--	---

Column 1	Column 2	Column 3	Column 4	Column 5	Column 6
1	1	-	-	1	-
2	1	-	-	1	-
3	1	-	-	1	-
4	1	-	-	2	-
5	1	1	-	1	1
6	1	1	-	2	1
7	1	1	-	1	1
8	1	1	1	2	1
9	1	1	1	2	1
10	1	1	1	2	1
11	1	1	1	3	1
12	1	1	1	3	1
13	1	1	1	4	1
14	1	1	1	4	1
15	1	1	1	5	1
16	1	1	1	6	1
17	1	1	1	7	1
18	1	1	1	7	1
19	1	1	1	8	1
20	1	1	1	8	1
21	1	1	1	9	1
22	1	1	1	9	1
23	1	1	1	9	1
24	1	1	1	10	1
25	1	1	1	10	1
26	1	1	1	11	1
27	1	1	1	11	1
28	1	1	1	12	1
29	1	1	1	12	1
30	1	1	1	13	1

- NOTES:
- The above Schedule has been prepared for use when the staffing entitlement of the School alters at any time during the currency of this Deed of Agreement to enable the parties hereto by reference to the total staffing entitlement of the School in Column (1), hereof to determine the number of teaching positions at the School which in terms of Section 65 (1) (a), (b), (c) and (d) of the Private Schools Conditional Integration Act 1975 and Clauses 14, 15, 17 and 18 of this Deed carry a responsibility for Religious Instruction and require a willingness and ability to take part in Religious Instruction or in terms of Section 66 of the Private Schools Conditional Integration Act 1975 require a particular capability in the teacher as described in Clause 19 of the Deed of Agreement. The Schedule to be read across from left to right.
 - Column (5). Section 65 (1) (c) must apply to the number of other positions indicated in the Column and may be made up of teachers appointed under the Initial Appointments Scheme and or other permanent appointments. It is recommended that where the School has a total staffing entitlement of up to eleven there should be at least one appointed as a permanent Scale A Teacher and in schools with a total staffing entitlement of between twelve and fifteen there should be two appointed as permanent Scale A Teachers and in schools with a total staffing entitlement of between fifteen and twenty-one there should be at least three appointed as permanent Scale A Teachers.
 - The School as at the effective date hereof has a staffing entitlement of SIX (6) teachers.