

THIS DEED OF AGREEMENT is made the 24 day of MAY
One thousand nine hundred and eighty-two (1982)
BETWEEN THE ROMAN CATHOLIC BISHOP OF THE DIOCESE OF
HAMILTON a "Corporation Sole" (hereinafter
with his successors referred to as "the Proprietor")
of the first part
and HER MAJESTY THE QUEEN acting by and through the
Minister of Education (hereinafter referred to as
"the Minister") of the second part

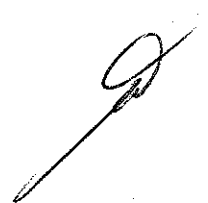
WHEREAS

- A The Proprietor is the owner of
St Mary's School TAURANGA
(hereinafter referred to as "the School")
- B The School is a Roman Catholic Primary School for
boys and girls from new entrants to form two
offering Education with a Special Character.
- C The School was established in 1942 and up to the effective
date of integration was in part staffed by members of the
Roman Catholic Religious Order of Women, known as the
Sisters of St. Joseph of Cluny. The said Order will con-
tinue after the effective date of integration to offer
teaching staff to the School, so long as it has members
available for that purpose.
- D The Minister and the Proprietor have agreed to enter
into this Deed of Agreement pursuant to the Private
Schools Conditional Integration Act 1975, whereby the
School is to be established as an integrated school.

NOW THIS DEED OF AGREEMENT WITNESSETH THAT IT IS HEREBY
COVENANTED AGREED AND DECLARED BY AND BETWEEN THE PARTIES
HERETO AS FOLLOWS :-

1. THAT the Minister and the Proprietor HEREBY AGREE that
the School is to become an integrated School pursuant to the
Private Schools Conditional Integration Act 1975.

1-63



2. THE School's Special Character as is hereinafter described, shall incorporate the Education with a Special Character as provided in the School AND IT IS HEREBY AGREED AND DECLARED that the School shall at all times in the future be conducted and operated so as to maintain and preserve the School's Special Character and these presents shall be interpreted so as to maintain and preserve the Special Character of the School.

3. ON behalf of the Proprietor it is hereby agreed that:


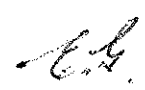
(a) The Proprietor is the owner of all the land and improvements more particularly described in the First Schedule hereto (hereinafter referred to as "the Proprietor's land") and of which for the purposes of this Deed of Agreement, the School premises form part only. The School premises for the purposes of this Deed of Agreement being the land and improvements more particularly described in the Second Schedule hereto (hereinafter referred to as "the School premises").

(b) The Proprietor shall set apart and appropriate as owner all the School premises and all the chattels and other assets of the Proprietor associated with the School exclusively for the purposes of the School as an integrated School, so that the Controlling Authority of the School shall have the exclusive right to the possession and use of the School premises and chattels

- PROVIDED THAT -

6.4.

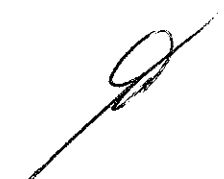


- (i) At the request of the Proprietor, the School Committee may grant the use of the School premises and chattels to the Proprietor or other person or persons at any time when the School premises and chattels are not required for school purposes and the School Committee shall not unreasonably or arbitrarily withhold its consent. The School Committee may require the Proprietor or other person or persons to pay a reasonable fee to the School Committee as a condition of such use.
- (ii) With the consent of the Proprietor, the School Committee may grant the use of the School premises and chattels to other person or persons at any time when the School premises and chattels are not required for School purposes and the Proprietor shall not unreasonably or arbitrarily withhold his consent. The School Committee may require any such person or persons to pay a reasonable fee to the School Committee as a condition of such use.
- (c) The Proprietor shall accept and meet the liability for all mortgages, liens and other charges upon the land and buildings comprising the School premises.
- (d) The Proprietor shall plan, pay for, and execute the improvements described in the Third Schedule hereto, to the School premises so as to bring the School buildings and associated facilities forming
- 
- 

part of the School premises up to the minimum standard for comparable State Schools prevailing at the effective date of this Deed of Agreement. Such improvements to be carried out in accordance with the dates specified against such improvements in the Third Schedule hereto. The Proprietor shall upon completion of any improvements to electrical services described in the Third Schedule hereto arrange for the local Electrical Supply Authority to inspect the School premises in terms of Regulation 45 of the Electrical Supply Regulations 1976.

- (e) The Proprietor shall plan, execute and pay for such capital works and associated facilities at the School as may be approved or required, from time to time, by the Minister pursuant to Section 40 (2) (d) of the Private Schools Conditional Integration Act 1975.
- (f) The Proprietor may own or hold upon trust, and control and maintain, any land, buildings and associated facilities that, although not part of the integrated School premises in terms of this Deed of Agreement are regarded by the Proprietor as appropriate to maintain the Special Character of the School.
- (g) The Proprietor shall insure all the buildings forming part of the School premises and the Proprietor's chattels (if any) owned or held upon trust for the purposes of the School and the other assets owned by the Proprietor for the purposes of the School against risks

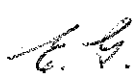

69



normally insured against, in some responsible insurance office in New Zealand, and further acknowledges the obligation on him created by Section 40 (2) (h) of the Private Schools Conditional Integration Act 1975.

- (h) No person employed at the School and paid for his services in whole or in part out of moneys appropriated by Parliament, shall be paid by the Proprietor or his servants or agents any remuneration additional to that provided for by the Private Schools Conditional Integration Act 1975 or shall be granted or permitted any condition of service more favourable than that permitted in the case of a person employed in a comparable position in a State School PROVIDED HOWEVER that a teacher to whom the provisions of Section 71 of the Private Schools Conditional Integration Act 1975 apply, shall continue to be paid no less than the same salary, and be accorded the same status, as he received or was accorded on the day before the effective date of the integration of the School.

4. THE land and buildings constituting the School premises are subject to the mortgages, debts, liens, encumbrances, easements, licences, restrictions and other matters which affect the title to or enjoyment of the land and have the appurtenances or benefits attaching to the land more particularly described in the First Schedule hereto.



5. THE Special Character of the School is that it is a Roman Catholic School for boys and girls established for the Roman Catholic community of the Diocese of Hamilton, which promotes and supports the School and of which the School is part, to provide and to continue to provide Education with a Special Character, that is to say:-

The School is a Roman Catholic School in which the whole School community through the general School programme and in its Religious instructions and observances, exercises the right to live and teach the values of Jesus Christ. These values are as expressed in the Scriptures and in the practices, worship and doctrine of the Roman Catholic Church, as determined from time to time by the Roman Catholic Bishop of the Diocese of Hamilton.

6. THE Proprietor of the School subject to the provisions of this Deed of Agreement :

- (a) Shall continue to have the responsibility to supervise the maintenance and preservation of the Education with a Special Character provided by the School;
- (b) Shall continue to have the right to determine from time to time what is necessary to preserve and safeguard the Special Character of the Education provided by the School and described in this Deed of Agreement;

6.4



- (c) May invoke the powers conferred upon him by the Private Schools Conditional Integration Act 1975, if in the opinion of the Proprietor the Special Character of the School as defined and described in this Deed of Agreement has been or is likely to be jeopardised or the Education with a Special Character as defined and described in this Deed of Agreement is no longer preserved and safeguarded.

7. (a) THE Controlling Authority of the School shall be the Education Board of the South Auckland Education District as constituted pursuant to Section 15 of the Education Act 1964.

- (b) The School shall be managed by a School Committee constituted pursuant to the provisions of Section 26 of the Private Schools Conditional Integration Act 1975. The School Committee shall consist of :

(i) One (1) member to be appointed by the Proprietor of the School;

(ii) Eight (8) members to be elected by the parents of children attending the School PROVIDED HOWEVER that in the event of the School roll altering at any time then the number of such members shall be fixed by ascertaining the number of members that a State School Committee would have, based on the current School roll in accordance with the provi-

E.G.



sions of the School Committees Administration Regulations 1965 and subtracting one from that number.

- (c) Any election conducted pursuant to Section 26 of the Private Schools Conditional Integration Act 1975 shall be conducted as nearly as possible in the manner prescribed by the School Committees Administration Regulations 1965 and any regulations made in amendment thereof or in substitution therefor and the provisions of those regulations shall, with any necessary modifications, be applied accordingly.
- (d) The control and management of the School shall be exercised subject to the provisions of Section 25 (6) of the Private Schools Conditional Integration Act 1975.

8. THE School had a roll of three hundred and eleven (311) pupils as at the 30th September 1981 being the year when the roll figures were last compiled. It is agreed by and between the parties hereto that the maximum roll of the School shall be three hundred (300) pupils.

9. THE Proprietor agrees that pursuant to Paragraphs (d) and (e) of Clause 3 of this Deed of Agreement he will bring the School up to the minimum standard of accommodation laid down from time to time by the Director-General for a comparable State School.

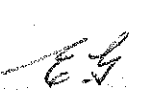
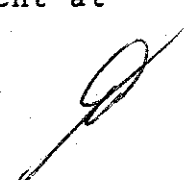
E.G.



10. (a) PREFERENCE of enrolment at the School under Section 29 (1) of the Private Schools Conditional Integration Act 1975 shall be given only to those children whose parents have established a particular or general religious connection with the Special Character of the School and the Controlling Authority shall not give preference of enrolment to the parents of any child unless the Proprietor has stated that those parents have established such a particular or general religious connection with the Special Character of the School.

(b) In accordance with Section 7 (6) (h) of the Private Schools Conditional Integration Act 1975, unless the Proprietor and the Controlling Authority otherwise agree and subject to places being available, the number of pupils whose parents do not have a preference of enrolment at the School in accordance with the provisions of Section 29 (1) of the Private Schools Conditional Integration Act 1975 shall be limited at all times to fifteen (15) pupils out of the total roll of the School and the Controlling Authority shall not enrol more than that number PROVIDED THAT to maintain and preserve the Special Character of the School the Controlling Authority in classifying such pupils so enrolled shall endeavour to reasonably distribute them through the range of classes offered by the School.

(c) Wherever any difficulty arises related to enrolment at

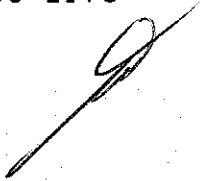
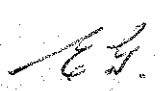


the School in terms of Section 54 of the Private Schools Conditional Integration Act 1975, it may be referred to the Controlling Authority of the School pursuant to the provisions of the said section.

11. IT is agreed by and between the parties hereto that as Religious observances and Religious instruction form part of the Education with a Special Character provided by the School, Religious observances and Religious instruction in accordance with the determination made from time to time by the Roman Catholic Bishop of the Diocese of Hamilton shall continue to form part of the School programme in accordance with Sections 31 and 32 of the Private Schools Conditional Integration Act 1975.

12. THE Proprietor, together with his servants, agents and licensees shall, subject to the proviso to Section 40 (2) (i) of the Private Schools Conditional Integration Act 1975, have at all reasonable times access to the School to ensure that the Special Character of the School is being maintained.


13. THE Proprietor, together with his servants, agents and licensees, shall have at all reasonable times access to the land and buildings of the School constituting the School premises sufficient to enable him to exercise the powers and carry out the responsibilities vested in him and imposed on him by the Private Schools Conditional Integration Act 1975 and by this Deed of Agreement.



14. AN advertisement for the position of Principal of the School shall in accordance with Section 65 (1) (a) of the Private Schools Conditional Integration Act 1975 state that a willingness and ability to take part in Religious instruction appropriate to the Special Character of the School shall be a condition of appointment. Any person so appointed to the position of Principal shall accept these requirements as a condition of appointment. The Principal so appointed shall accept and recognise a responsibility to maintain and preserve the Special Character of the School.

15. THERE shall be a position of responsibility at the School to be designated Director of Religious Studies in accordance with Section 65 (1) (b) of the Private Schools Conditional Integration Act 1975, which position shall be part of the normal staffing entitlement of the School as established by Regulations made under the Education Act 1964 and an advertisement for that position shall state that a willingness and ability to take part in Religious instruction appropriate to the Special Character of the School shall be a condition of appointment. Any person so appointed to the position of Director of Religious Studies shall accept these requirements as a condition of appointment. The Director of Religious Studies shall give guidance and provide effective leadership in Religious instruction and observances throughout the School PROVIDED HOWEVER that in the event of the staffing entitlement of the School altering at any time during the currency of this Deed of Agreement then the position of Director of Religious Studies shall be

E.G.



determined in accordance with the then current staffing entitlement of the School under the Education Act 1964 and Regulations made thereunder and as is more particularly described in the Fourth Schedule hereto.

16. A person appointed as aforesaid to the position of Director of Religious Studies at the School shall undertake such teaching duties, if any, as may be required by the Principal of the School.

17. THERE shall be a position at the School to be designated as Senior Teacher Junior Classes in accordance with Section 65 (1) (d) of the Private Schools Conditional Integration Act 1975 and the Controlling Authority of the School in advertising the position of Senior Teacher Junior Classes shall state that a willingness and ability to take part in Religious instruction appropriate to the Special Character of the School shall be a condition of appointment. Any person so appointed to the position of Senior Teacher Junior Classes shall accept these requirements as a condition of appointment PROVIDED HOWEVER that in the event of the staffing entitlement of the School altering at any time during the currency of this Deed of Agreement then the position of Senior Teacher Junior Classes shall be determined in accordance with the then current staffing entitlement of the School under the Education Act 1964 and Regulations made thereunder and as is more particularly described in the Fourth Schedule hereto.

18. THERE shall be three (3) other teaching positions at the School which in accordance with Section 65 (1) (c) of the Private Schools Conditional Integration Act 1975, shall be positions of importance

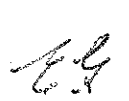
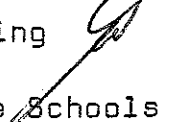
EG.

9

carrying a responsibility for Religious instruction and an advertisement for those positions shall state that a willingness and ability to take part in Religious instruction appropriate to the Special Character of the School shall be a condition of appointment. Any person so appointed to these positions shall accept these requirements as a condition of appointment PROVIDED HOWEVER that in the event of the staffing entitlement of the School altering at any time during the currency of this Deed of Agreement then the number of teaching positions designated under Section 65 (1) (c) of the Private Schools Conditional Integration Act 1975 as positions of importance carrying a responsibility for Religious instruction shall be determined in accordance with the then current staffing entitlement of the School under the Education Act 1964 and Regulations made thereunder and as is more particularly described in the Fourth Schedule hereto.

19. THE position of Deputy Principal at the School is agreed pursuant to Section 66 of the Private Schools Conditional Integration Act 1975 to be a special position that requires particular capabilities in the teacher appointed, namely to assist in planning and organising the courses and programmes at the School to ensure that they reflect the Special Character of the School and an advertisement for the position of Deputy Principal shall state that possession of these capabilities shall be a condition of appointment. Any person so appointed to the position of Deputy Principal shall accept these requirements as a condition of appointment.

20. THE Proprietor may with the consent of the Controlling Authority in accordance with Section 69 (1) of the Private Schools


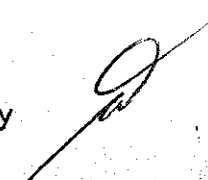


Conditional Integration Act 1975 arrange for any retired teacher to undertake voluntary tasks to assist in the School with the teaching of Religious observances and Religious instruction appropriate to the Special Character of the School.

21. IT is agreed by and between the parties hereto that as Religious observances and Religious instruction form part of the Education with a Special Character provided by the School the Proprietor may employ any person as a Chaplain or otherwise, for the purposes of Religious observances or instruction and the provisions of Section 69 (2) and (3) of the Private Schools Conditional Integration Act 1975 shall apply.

22. THE Proprietor of the School shall have the right to enter into an Agreement with the parents or other persons accepting responsibility for the education of a child providing that, as a condition of enrolment and attendance of that child at the School, the parents or other persons shall pay attendance dues established in respect of the School or group of Integrated Schools owned by the Proprietor or Proprietors of other Roman Catholic Integrated Schools at such rates and subject to such conditions as may be approved from time to time by the Minister, by notice in the New Zealand Gazette in accordance with Section 36 of the Private Schools Conditional Integration Act 1975.

23. THE School is a Primary School for boys and girls from new entrants to form two and shall remain so until such time as an agreement to a change in this organisation of the School is reached between the Proprietor and the Minister and the parties hereto enter into a supplementary





Deed of Agreement to give effect thereto.

24. WHERE any of the costs associated with the conduct of the Proprietor's land and buildings that are not part of the School premises cannot be separated from the costs associated with the operation of the School premises, the Proprietor and the School Committee and/or the Controlling Authority shall contribute to such costs according to their respective use of the services and facilities.

25. IT is acknowledged by and between the parties hereto pursuant to Clause 24 hereof that certain of the services and facilities on or serving the Proprietor's land and buildings are used in common for the purpose of the School premises and as is more particularly delineated on the plan forming part of the Second Schedule hereto. In particular, the water supply, the power supply and the sewerage and drainage systems are all used in common and the costs of maintaining such services and facilities shall be apportioned as provided in Clause 24 hereof. If practicable the power supply to the School premises shall be separately metered at the expense of the Proprietor. Where such services or facilities are wholly or partly situated outside the School premises the Proprietor will continue to make such services or facilities available to the School premises.

26. THE Proprietor shall not engage any teachers between the date of execution of this Deed of Agreement and the effective date of integration other than those whose names have already been notified by the Proprietor to the Director-General of Education without first obtaining the consent of the Director-General.



27. THE Proprietor shall reimburse the Minister for the payment of salary, wages and proportion of holiday pay due and paid by the Minister in respect of the 1982 School year to any person employed at the School up to the effective date of Integration PROVIDED THAT the Proprietor shall not be required to reimburse the Minister in respect of any salary, wages and holiday pay which has been paid to teachers up to the date of integration by the Minister in accordance with the terms of the Minister's letter of 4 December 1980 to Archbishop Williams.

28. IT is agreed by and between the parties hereto that neither the Minister nor the Controlling Authority shall be responsible for damage caused directly or indirectly to the School premises by the fire which occurred in Block 3 (more particularly outlined on the plan forming part of the Third Schedule hereto) on 20th March 1982 nor shall the Minister or Controlling Authority be responsible for any damage caused directly or indirectly to the School premises by contractors or other persons engaged in repairing damage caused by the said fire.

29. THE Minister shall be responsible only for the normal maintenance of the retaining walls on the School premises and all other expenditure in respect of the retaining walls of the School shall be the responsibility of the Proprietor.

30. THE Minister shall subject to Clause 3 (d) and (e), Clause 28 and Clause 29 of this Deed of Agreement after the effective date hereof maintain the School premises and the associated facilities in a state of repair order and condition as for a comparable State School under the same Controlling Authority and provide for the maintenance of the chattels as though the School were a State School. The School shall be entitled to such furniture and equipment as the Controlling Authority supplies from time to time to comparable State Schools.

31. THE effective date of this Deed of Agreement shall be the 26th day of May, 1982.

32. ON and after the effective date specified in this Deed of Agreement the School shall be an integrated School in terms of the Private Schools Conditional Integration Act 1975.

IN WITNESS WHEREOF these presents have been executed the day and year first hereinbefore written.

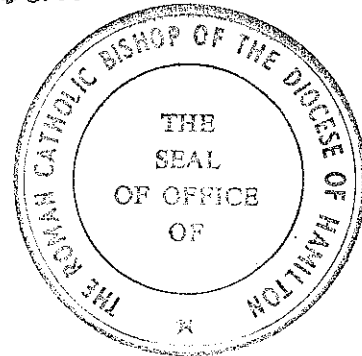


SIGNED by EDWARD RUSSELL GAINES

The ROMAN CATHOLIC BISHOP OF THE
DIOCESE OF HAMILTON and sealed

with his Seal of Office in the
presence of :-

W. M. M. (Secretary)
4 Clarence St.
Hamilton



SIGNED FOR AND ON BEHALF OF HER MAJESTY

THE QUEEN by MERVYN LANGLOIS WELLINGTON

Minister of Education in the presence of:-

M. J. Yokler
12 Hokianga Road
Hataitai, Wellington.
(Private Secretary)

[Signature]

FIRST SCHEDULE

Description of total land buildings and other improvements comprising the Proprietor's land of which the School premises form part.

THE PROPRIETOR'S LAND

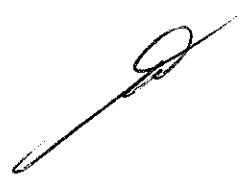
All that Land, School buildings and other improvements owned by the Roman Catholic Bishop of the Diocese of Hamilton, situate at Tauranga, New Zealand, delineated in green on the annexed plan, being known as Saint Mary's School, Tauranga and being more particularly described as follows:

FIRSTLY: All that freehold parcel of land containing 1.5042 hectares more or less being Lots 2 and 4 Deposited Plan 31377 Lot 1 Deposited Plan S.5473 and being Allotments 540, 541 and part of Allotments 536, 537, 538, 539 and 542 Section 2 Town of Tauranga and being all the land in Certificate of Title Volume 1465 folio 89 (South Auckland Registry)

SECONDLY: All that Freehold parcel of land containing 4780 square metres more or less being Lot 2 on Deposited Plan S.10933 and being part Allotments 536, 537, 538 and 539 Section 2 Town of Tauranga and being all the land in Certificate of Title Volume 7B folio 170 (South Auckland Registry).

There is a debt owing to the Hamilton Advances Account (Diocesan Development Fund) of the Roman Catholic Diocese of Hamilton.

69



SECOND SCHEDULE

Description of land buildings and other improvements comprising the School premises.

THE SCHOOL PREMISES

All that part of the Proprietor's land as described in the First Schedule hereto, delineated in red on the annexed plan of the Proprietor's land, which plan forms part of this Schedule TOGETHER WITH all the School buildings and other improvements thereon SAVE AND EXCEPT that part of Block 6 more particularly delineated in blue on the annexed plan together with a reservation in favour of that excepted portion of full rights of access inter se and of ingress and egress to and from that excepted portion from and to Thirteenth Avenue, Tauranga.

6.4



ST MARY'S SCHOOL, TAURANGA

THIRD SCHEDULE

WORKS TO BE CARRIED OUT BY THE PROPRIETOR IN RELATION
TO THE INTEGRATED SCHOOL

These works are to be planned, executed and paid for by the proprietor subject to the provisions of this schedule in relation to the buildings and associated facilities to bring them up to the minimum standard for a comparable state school.

In those cases where the words "half cost to the met by the Education Board" appear in relation to particular works, the building supervisor of the South Auckland Education Board shall draw up the specifications for such particular works and the proprietor shall obtain his approval to the contractor and to the price before commencing such works. All work is to be carried out by competent tradesmen or in a workmanlike manner to the South Auckland Education Board standards.

AGREED PHASING OF WORK TO BE COMPLETED BY

SITE	26.5.82	31.3.83	31.3.84	31.3.85	31.3.86	31.3.87
<u>Sealed Areas</u>						
Remove broken concrete from entrance driveway off Thirteenth Avenue and replace with reinforced concrete driveway wide enough for heavy traffic		X				
Provide incinerator to SAEB requirements		X				
<u>Exterior BLOCK 1</u>						
Replace broken base vents		X				
Repaint exterior excluding roof			X			
Repair exterior lining to entry door of area 4		X				
Repair single entry doors to basement		X				
<u>Interior</u>						
Areas 2 and 3						
Repair linoleum strip and edging in area 2				X		
Patch old roof leak marks in ceiling		X				
Repaint fibrous plaster ceiling and wall lining down to dado				X		
Area 4						
Redecorate						
Area 5				X		
Replace broken coat hooks		X				
Redecorate			X			

BLOCK 1 Interior (continued)	26.5.82	31.3.83	31.3.84	31.3.85	31.3.86	31.3.87
Area 6						
Replace broken coat hooks		X				
Redecorate						
Area 7						
Patch old leak holes in ceiling			X			
Repaint ceiling and windows plus fibrous plaster wall areas down to dado			X			
Area 8						
Replace broken light cord and fitting		X				
Area 13						
Redecorate				X		
Area 14						
Patch old leak holes in ceiling					X	
Redecorate					X	
Area 15						
Replace broken coat hooks		X				
Install ceiling lining		X				
Redecorate						
Area 16						
Patch old leak holes in ceiling			X			
Redecorate				X		
Redecorate				X		
<u>Structural</u>						
Strengthen area 15 to MWD standards. Reinforce 1956 part to MWD standards			X			
<u>Electrical</u>						
Replace VIR circuits in main switchboard		X				
Replace main earth for metering	X					
Areas 3, 4, 7, 14, 16						
Upgrade lighting in each area to state school standards						
Upgrade electric heating in areas 4, 7, 14 and 16 to state school standards		X				
Provide an additional wall mounted socket outlet in area 13		X				
<u>Electrical General</u>						
Replace existing socket outlets with modern wall mounted socket outlets		X				

BLOCK 1 (continued)

Fire ProtectionMeans of Egress

Remove egress door locks and replace with a type that can be opened from the inside without the use of keys

Linings

Areas 18A and 18B

Line walls, ceilings and underfloor areas with a $\frac{1}{2}$ hour FRR material

Paint linings of areas 4, 7, 14 and 16 with a fire retardant paint approved by MWD and applied in accordance with manufacturers specifications when redecoration is carried out

Fire Equipment

Replace existing hose reel with 25m x 13mm hose reel and provide marker label.

Remove surplus BCF units

BLOCK 2

Exterior

Replace rotted vertical boarding and facings

Replace rusted louvre fittings

Repaint exterior

Interior

Area 21

Redecorate (half cost to be met by Education Board)

Area 19

Cover concrete floors with fletco or similar

Replace broken vinyl tiles

Area 23

Repair defective cistern and cover concrete floor with fletco or similar

26.5.82

31.3.83

31.3.84

31.3.85

31.3.86

31.3.87

x

x

x

x

x

x

x

x

x

x

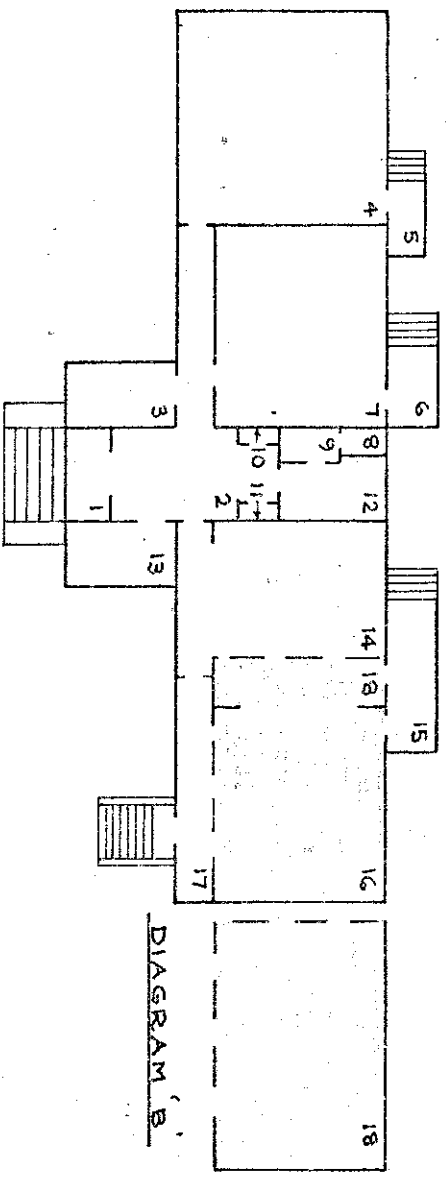
x

x

x

BLOCK 3 Fire Protection <u>Express</u> (continued) Provide EXIT sign above area 39 <u>Linings</u> Treat combustible linings with fire retardant paint as redecoration falls due <u>Emergency lighting system</u> Install an emergency lighting system <u>BLOCKS 4 and 5</u> Repaint exterior (half cost to be met by Education Board)	26.5.82	31.3.83	31.3.84	31.3.85	31.3.86	31.3.87
	X					
BLOCK 8 Repaint roof and all woodwork Areas 58 and 59 Provide clothes hooks or pegs Area. 60 Provide storage for pool chemicals FIRE PROTECTION GENERAL Install a manual fail safe fire alarm system with call points and bells which are interconnected and audible, throughout the school. BUILDING REQUIREMENTS Replace fire damaged portion of Block 3 with school facilities to Education Department standards Demolish Block 8 Provide by new construction or remodelling:- Staffroom of 28m ² Staff kitchen of 4.5m ² 1 STDU for female staff toilet.	X	X		X		X

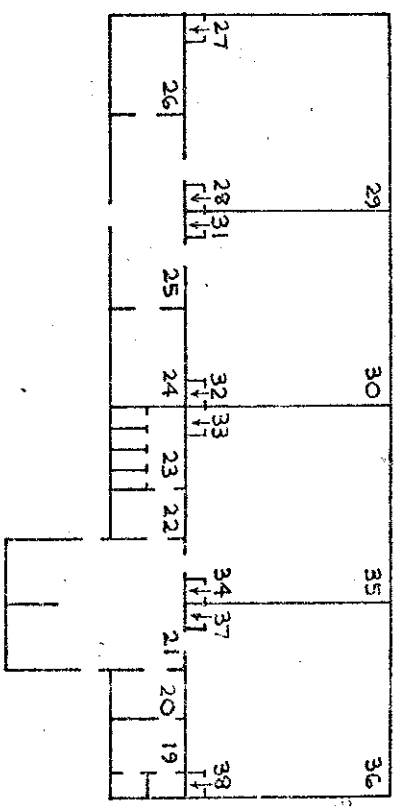
DEPARTMENT OF EDUCATION
buildings division: integration of private schools
School: ST MARY'S SCHOOL, TAURANGA



ROOM	AREA
1 LANDING	
2 ENTRANCE FOYER	
3 BOOKROOM	10.2 m ²
4 CLASSROOM	61.24 m ²
5 PORCH	
6 PORCH	
7 LIBRARY	
8 TOILET	52.31 m ²
9 WASHROOM	
10 STORE	0.84 m ²
11 STORE	0.70 m ²
12 PRINCIPAL OFFICE	8.64 m ²
13 CLASSROOM	10.2 m ²
14 CLASSROOM	55.18 m ²
15 PORCH	
16 CLASSROOM	50.34 m ²
17 CORRIDOR	
18 STORAGE UNDER	63.83 m ²

TOTAL AREA = 376.88 m²

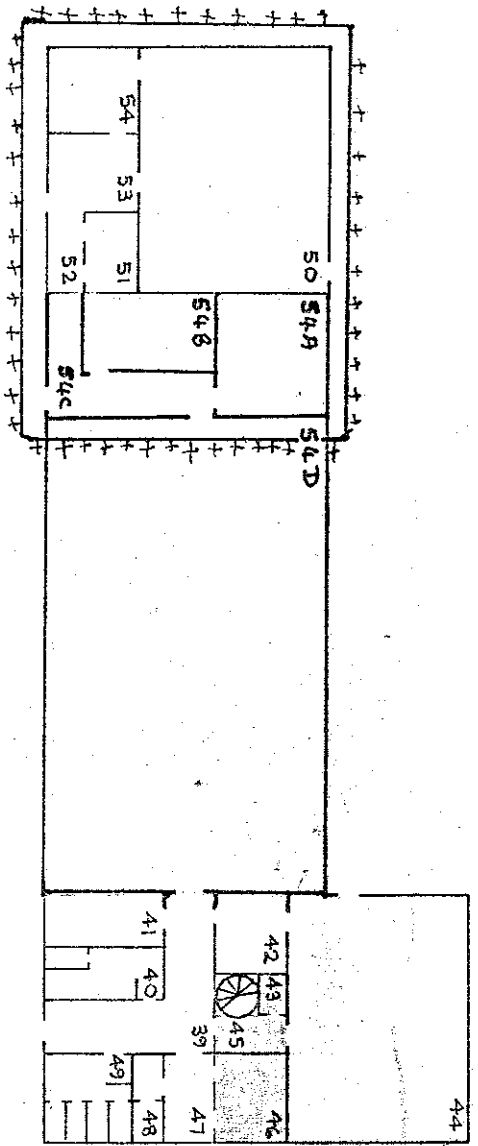
DIAGRAM 'B'



ROOM	AREA
19 MALE TOILETS	
20 WASHROOM	
21 CLOAKROOM	
22 WASHROOM	
23 TOILETS	10.25 m ²
24 BOOKROOM	
25 CLOAKROOM	
26 MEDICAL ROOM	10.25 m ²
27 CUPBOARD	
28 CUPBOARD	58.81 m ²
29 CLASSROOM	58.81 m ²
30 CLASSROOM	
31 CUPBOARD	
32 CUPBOARD	
33 CUPBOARD	
34 CUPBOARD	58.81 m ²
35 CLASSROOM	58.81 m ²
36 CLASSROOM	
37 CUPBOARD	
38 CUPBOARD	

TOTAL AREA = 353.87 m²

Drawing No:	Scale:
EIP 185 02	1:300
Date:	
8 OCTOBER 1980	SHEET 2 OF 3 SHEETS
Revision	Drawn: JES
24 NOVEMBER 1980	



BLOCK 3
AREA

ROOM	AREA
39 CORRIDOR	
40 MALE TOILET	
41 STORE	7.74 m ²
42 OFFICE	8.12 m ²
43 CLEANER	1.50 m ²
44 CLASSROOM	71.41 m ²
45 STAIRCASE	
46 MEZZANINE	16.65 m ²
47 STAFFROOM	17.04 m ²
48 STAFF TOILET	
49 FEMALE TOILETS	
50 CLASSROOM	69.35 m ²
51 BOOKROOM	5.45 m ²
52 CORRIDOR	
53 FOYER	
54 OFFICE	10.56 m ²
54A WITHDRAWAL	18.45 m ²
54B WITHDRAWAL	15.00 m ²
54C COUNSELLOR	12.35 m ²
54D HALL	191.02 m ²
TOTAL AREA	527.81 m ²

+++++
FIRE DAMAGED AREA

[Signature]

DEPARTMENT OF EDUCATION

buildings division: integration of private schools

School: ST MARY'S SCHOOL, TAURANGA

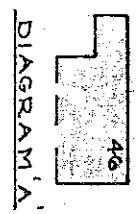
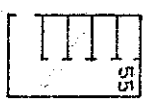
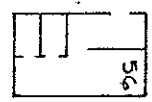


DIAGRAM A



BLOCK 4

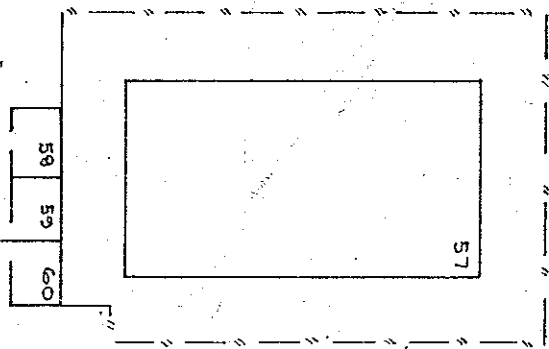
ROOM	AREA
55 GIRLS' TOILETS	
TOTAL AREA	17.28 m ²



BLOCK 5

ROOM	AREA
56 BOYS' TOILETS	
TOTAL AREA	17.28 m ²

BLOCK 7
AREA
ROOM
57 SWIMMING POOL 107.8 m²



BLOCK 8

ROOM	AREA
58 FILTER ROOM	
59 MALE CHANGING ROOM	
60 FEMALE CHANGING ROOM	
TOTAL AREA	18.46 m ²

Drawing No: Scale:

ELP 185 03 1:300

Date: SHEET 3 OF 3 SHEETS

8 OCTOBER 1980

REVISION 24 NOVEMBER 1980 Drawn: *[Signature]*

3 DECEMBER 1980

FOURTH SCHEDULE.

Schedule of staff appointments to St. Mary's School, TAURANGA

under Sections 65(1) & 66 of the Private Schools Conditional Integration Act 1975 being special positions relating to the Special Character of the School

Total Staff Entitlement of School	Principal to be Appointed under S.65 (1) (a) Private Schools Conditional Integration Act 1975 Member of Staff to be so Appointed	Director of Religious Studies to be Appointed under S.65 (1) (b) Private Schools Conditional Integration Act 1975 Scale A or B1 or Higher	Senior Teacher Junior Classes to be Appointed under S.65 (1) (d) Private Schools Conditional Integration Act 1975 Member of Staff to be so Appointed	Religious Instruction Positions of Importance Number of other teachers to be Appointed under S.65 (1) (c) of Private Schools Conditional Integration Act 1975 Member of Staff to be so Appointed (See Footnote No. 2 to this Schedule)	Deputy Principal to be Appointed under S.66 Private Schools Conditional Integration Act 1975 Member of Staff to be so Appointed
Column 1	Column 2	Column 3	Column 4	Column 5	Column 6
1	1	-	-	-	-
2	1	-	-	1	-
3	1	-	-	1	-
4	1	-	-	2	-
5	1	-	-	1	-
6	1	-	-	2	-
7	1	-	-	1	-
8	1	-	-	2	-
9	1	-	-	2	-
10	1	-	-	3	-
11	1	-	-	3	-
12	1	-	-	4	-
13	1	-	-	5	-
14	1	-	-	6	-
15	1	-	-	7	-
16	1	-	-	7	-
17	1	-	-	7	-
18	1	-	-	8	-
19	1	-	-	8	-
20	1	-	-	9	-
21	1	-	-	9	-
22	1	-	-	9	-
23	1	-	-	10	-
24	1	-	-	10	-
25	1	-	-	11	-
26	1	-	-	11	-
27	1	-	-	12	-
28	1	-	-	12	-
29	1	-	-	13	-
30	1	-	-	13	-

NOTES:

1. The above Schedule has been prepared for use when the staffing entitlement of the School alters at any time during the currency of this Deed of Agreement to enable the parties hereto by reference to the total staffing entitlement of the School in Column (1) hereof to determine the number of teaching positions at the School which in terms of Section 65 (1) (a), (b), (c) and (d) of the Private Schools Conditional Integration Act 1975 and Clauses 14, 15, 17 and 18 of this Deed carry a responsibility for Religious Instruction and require a willingness and ability to take part in Religious Instruction or in terms of Section 66 of the Private Schools Conditional Integration Act 1975 require a particular capability in the teacher as described in Clause 19 of the Deed of Agreement. The Schedule to be read across from left to right.

2. Column (5). Section 65 (1) (c) must apply to the number of other positions indicated in the Column and may be made up of teachers appointed under the Initial Appointments Scheme and or other permanent appointments. It is recommended that where the School has a total staffing entitlement of up to eleven there should be at least one appointed as a permanent Scale A Teacher and in schools with a total staffing entitlement of between twelve and fifteen there should be two appointed as permanent Scale A Teachers and in schools with a total staffing entitlement of between fifteen and twenty-one there should be at least three appointed as permanent Scale A Teachers.

3. The School as at the effective date hereof has a staffing entitlement of ELEVEN (11) teachers