

THIS DEED OF AGREEMENT is made the 31st day of
March One thousand nine hundred and eighty-three (1983)

BETWEEN THE ROMAN CATHOLIC BISHOP OF THE DIOCESE OF
CHRISTCHURCH a Corporation Sole (hereinafter with his successors
referred to as "the Proprietor") of the first part

AND HER MAJESTY THE QUEEN acting by and through the Minister of
Education (hereinafter referred to as "the Minister") of the second part

WHEREAS:

- A The Proprietor conducts St. Patrick's School, GREYMOUTH
(hereinafter referred to as "the School")
- B The School is a Roman Catholic Primary School for boys and girls
from new entrants to Form Two (2) offering Education with a Special
Character.
- C The School was established in 1867 and up to the effective date of
integration was in part staffed by members of the Roman Catholic
Religious Order of Women known as the Sisters of Mercy and the
Roman Catholic Religious Order of Men known as the Marist Brothers
of the Schools. The said Orders will continue after the effective date
of integration to offer teaching staff to the School, so long as they
have members available for that purpose.
- D The Minister and the Proprietor have agreed to enter into this Deed
of Agreement pursuant to the Private Schools Conditional Integration
Act 1975, whereby the School is to be established as an integrated
School.

NOW THIS DEED OF AGREEMENT WITNESSETH THAT IT IS HEREBY
COVENANTED AGREED AND DECLARED BY AND BETWEEN THE
PARTIES HERETO as follows:-

1. THAT the Minister and the Proprietor HEREBY AGREE that the School is to become an integrated School pursuant to the Private Schools Conditional Integration Act 1975.

2. THE School's Special Character as is hereinafter described, shall incorporate the Education with a Special Character as provided in the School AND IT IS HEREBY AGREED AND DECLARED that the School shall at all times in the future be conducted and operated so as to maintain and preserve the School's Special Character and these presents shall be interpreted so as to maintain and preserve the Special Character of the School.

3. ON behalf of the Proprietor it is hereby agreed that:-

- (a) The Proprietor is the occupier of all the land and improvements more particularly described in the **First Schedule** hereto (hereinafter referred to as "**the Proprietor's land**") and of which for the purposes of this Deed of Agreement, the School premises form part only. The School premises for the purposes of this Deed of Agreement being the land and improvements more particularly described in the **Second Schedule** hereto (hereinafter referred to as "**the School premises**").
- (b) The Proprietor shall set apart and appropriate all the School premises and all the chattels and other assets of the Proprietor associated with the School exclusively for the purposes of the School as an integrated School, so that the Controlling Authority of the School shall have the exclusive right to the possession and use of the School premises and chattels -

PROVIDED THAT

- (i) At the request of the Proprietor, the School Committee may grant the use of the School premises and chattels to the Proprietor or other person or persons at any time when the

School premises and chattels are not required for school purposes and the School Committee shall not unreasonably or arbitrarily withhold its consent. The School Committee may require the Proprietor or other person or persons to pay a reasonable fee to the School Committee as a condition of such use.

- (ii) With the consent of the Proprietor, the School Committee may grant the use of the School premises and chattels to other person or persons at any time when the School premises and chattels are not required for School purposes and the Proprietor shall not unreasonably or arbitrarily withhold his consent. The School Committee may require any such person or persons to pay a reasonable fee to the School Committee as a condition of such use.
- (c) The Proprietor shall accept and meet the liability for all mortgages, liens and other charges upon the land and buildings comprising the School premises.
- (d) The Proprietor shall plan, pay for, and execute the improvements described in the **Third Schedule** hereto, to the School premises, so as to bring the School buildings and associated facilities forming part of the School premises up to the minimum standard for comparable State Schools prevailing at the effective date of this Deed of Agreement. Such improvements are to be carried out in accordance with the dates specified against such improvements in the **Third Schedule** hereto. The Proprietor shall upon completion of any improvements to the electrical services described in the **Third Schedule** hereto arrange for the local Electrical Supply Authority to inspect the School premises in terms of Regulation 45 of the Electrical Supply Regulations 1976.
- (e) The Proprietor shall plan, execute and pay for such capital works and associated facilities at the School as may be approved or required, from time to time, by the Minister pursuant to Section 40(2)(d) of the Private Schools Conditional Integration Act 1975.

- (f) The Proprietor may own or hold upon trust, and control and maintain, any land, buildings and associated facilities that, although not part of the integrated School premises in terms of this Deed of Agreement are regarded by the Proprietor as appropriate to maintain the Special Character of the School.
- (g) The Proprietor shall insure all the buildings forming part of the School premises and the Proprietor's chattels (if any) owned or held upon trust for the purposes of the School and the other assets owned by the Proprietor for the purposes of the School against risks normally insured against, in some responsible insurance office in New Zealand, and further acknowledges the obligation on him created by Section 40(2)(h) of the Private Schools Conditional Integration Act 1975.
- (h) No person employed at the School and paid for his services in whole or in part out of moneys appropriated by Parliament, shall be paid by the Proprietor or his servants or agents any remuneration additional to that provided for by the Private Schools Conditional Integration Act 1975 or shall be granted or permitted any condition of service more favourable than that permitted in the case of a person employed in a comparable position in a State School **PROVIDED HOWEVER** that a teacher to whom the provisions of Section 71 of the Private Schools Conditional Integration Act 1975 apply, shall continue to be paid no less than the same salary, and be accorded the same status, as he received or was accorded on the day before the effective date of the integration of the School.

4. THE land and buildings constituting the School premises are subject to the mortgages, debts, liens, encumbrances, easements, licences, restrictions and other matters which affect the title to or enjoyment of the land and have the appurtenances or benefits attaching to the land more particularly described in the **First Schedule** hereto.

5. THE Proprietor undertakes and agrees that up to the effective date hereof he has, to the best of his knowledge and belief observed, performed, fulfilled and kept all and singular the covenants, conditions and agreements contained or implied in those leases granted in respect of the Certificate of Title contained in the **First Schedule** AND the Proprietor hereby further agrees that he will at all times during the continuance of this Deed of Agreement duly and punctually pay the rent reserved under any of the said leases or any new lease or leases in renewal thereof or in substitution therefor as and when the same shall become due and payable and will well and faithfully observe perform fulfill and keep all and singular the covenants conditions and agreements contained or implied in the said leases and on the part of the Proprietor as lessee thereunder to be observed performed fulfilled and kept AND the Proprietor accordingly indemnifies the Minister in respect of any breach of the obligations of the Proprietor as lessee under the said leases **PROVIDED ALWAYS** that the Minister shall be responsible to maintain the School in accordance with the provisions of **clause 33** hereof.

6. THE Proprietor undertakes to obtain the lessor's consent to part with possession of the school, more particularly described in the **Second Schedule** hereto, to the Canterbury Education Board.

7. THE Special Character of the School is that it is a Roman Catholic School for boys and girls established by the Roman Catholic Bishop of the Diocese of Christchurch for the Roman Catholic community of the Diocese of Christchurch which promotes and supports the School and of which the School is part, to provide and to continue to provide Education with a Special Character, that is to say :-

The School is a Roman Catholic School in which the whole School community through the general School programme and in its Religious instructions and observances, exercises the

HBON



right to live and teach the values of Jesus Christ. These values are as expressed in the Scriptures and in the practices, worship and doctrine of the Roman Catholic Church, as determined from time to time by the Roman Catholic Bishop of the Diocese of Christchurch.

8. THE Proprietor of the School subject to the provisions of this Deed of Agreement :-

- (a) Shall continue to have the responsibility to supervise the maintenance and preservation of the Education with a Special Character provided by the School;
- (b) Shall continue to have the right to determine from time to time what is necessary to preserve and safeguard the Special Character of the Education provided by the School and described in this Deed of Agreement;
- (c) May invoke the powers conferred upon him by the Private Schools Conditional Integration Act 1975, if in the opinion of the Proprietor the Special Character of the School as defined and described in this Deed of Agreement has been or is likely to be jeopardised or the Education with a Special Character provided by the School as defined and described in this Deed of Agreement is no longer preserved and safeguarded.

9. (a) THE Controlling Authority of the School shall be the Education Board of the Canterbury Education District as constituted pursuant to Section 15 of the Education Act 1964.

- (b) The School shall be managed by a School Committee constituted pursuant to the provisions of Section 26 of the Private Schools Conditional Integration Act 1975. The School Committee shall consist of :-
- (i) One (1) member to be appointed by the Proprietor of the School;
 - (ii) Eight (8) members to be elected by the parents of the children attending the School **PROVIDED HOWEVER** that in the event of the School roll altering at any time then the number of such members shall be fixed by ascertaining the number of members that a State School Committee would have, based on the current School roll in accordance with the provisions of the School Committees Administration Regulations 1965 and subtracting one from that number.
- (c) Any election conducted pursuant to Section 26 of the Private Schools Conditional Integration Act 1975 shall be conducted as nearly as possible in the manner prescribed by the School Committees Administration Regulations 1965 and any regulations made in amendment thereof or in substitution therefor and the provisions of those regulations shall, with any necessary modifications, be applied accordingly.
- (d) The control and management of the School shall be exercised subject to the provisions of Section 25(6) of the Private Schools Conditional Integration Act 1975.

10. THE School had a roll of two hundred and twenty-nine (229) pupils as at the 30th September 1982, being the year when the roll figures were last compiled. It is agreed by and between the parties hereto that the maximum roll of the School shall be two hundred and thirty (230) pupils.

11. THE Proprietor agrees that pursuant to **paragraphs (d) and (e)** of **Clause 3** of this Deed of Agreement he will bring the School up to the minimum standard of accommodation laid down from time to time by the Director-General for a comparable State School.

12. (a) **PREFERENCE** of enrolment at the School under Section 29(1) of the Private Schools Conditional Integration Act 1975 shall be given only to those children whose parents have established a particular or general religious connection with the Special Character of the School and the Controlling Authority shall not give preference of enrolment to the parents of any child unless the Proprietor has stated that those parents have established such a particular or general religious connection with the Special Character of the School.

(b) In accordance with Section 7(6)(h) of the Private Schools Conditional Integration Act 1975, unless the Proprietor and the Controlling Authority otherwise agree and subject to places being available, the number of pupils whose parents do not have a preference of enrolment at the School in accordance with the provisions of Section 29(1) of the Private Schools Conditional Integration Act 1975 shall be limited at all times to twelve (12) pupils out of the total roll of the School and the Controlling Authority shall not enrol more than that number **PROVIDED THAT** to maintain and preserve the Special Character of the School the Controlling Authority in classifying such pupils so enrolled shall endeavour to reasonably distribute them through the range of classes offered by the School.

(c) Wherever any difficulty arises related to enrolment at the School in terms of Section 54 of the Private Schools Conditional Integration Act 1975, it may be referred to the

Controlling Authority of the School pursuant to the provisions of the said section.

13. IT is agreed by and between the parties hereto that as Religious observances and Religious instruction form part of the Education with a Special Character provided by the School, Religious observances and Religious instruction in accordance with the determination made from time to time by the Roman Catholic Bishop of the Diocese of Christchurch shall continue to form part of the School programme in accordance with Sections 31 and 32 of the Private Schools Conditional Integration Act 1975

14. THE Proprietor, together with his servants, agents and licensees, shall, subject to the proviso to Section 40(2)(i) of the Private Schools Conditional Integration Act 1975, have at all reasonable times access to the School to ensure that the Special Character of the School is being maintained.

15. THE Proprietor, together with his servants, agents and licensees, shall have at all reasonable times access to the land and buildings of the School constituting the School premises sufficient to enable him to exercise the powers and carry out the responsibilities vested in him and imposed on him by the Private Schools Conditional Integration Act 1975 and by this Deed of Agreement.

16. AN advertisement for the position of Principal of the School shall in accordance with Section 65(1)(a) of the Private Schools Conditional Integration Act 1975 state that a willingness and ability to take part in Religious instruction appropriate to the Special Character of the School shall be a condition of appointment. Any person so appointed to the position of Principal shall accept these requirements as a condition of appointment.

The Principal so appointed shall accept and recognise a responsibility to maintain and preserve the Special Character of the School.

17. THERE shall be a position of responsibility at the School to be designated Director of Religious Studies in accordance with Section 65(1)(b) of the Private Schools Conditional Integration Act 1975, which position shall be part of the normal staffing entitlement of the School as established by Regulations made under the Education Act 1964 and an advertisement for that position shall state that a willingness and ability to take part in Religious instruction appropriate to the Special Character of the School shall be a condition of appointment. Any person so appointed to the position of Director of Religious Studies shall accept these requirements as a condition of appointment. The Director of Religious Studies shall give guidance and provide effective leadership in Religious instruction and observances throughout the School **PROVIDED HOWEVER** that in the event of the staffing entitlement of the School altering at any time during the currency of this Deed of Agreement then the position of Director of Religious Studies shall be determined in accordance with the then current staffing entitlement of the School under the Education Act 1964 and Regulations made thereunder and as is more particularly described in the **Fourth Schedule** hereto.

18. A. person appointed as aforesaid to the position of Director of Religious Studies at the School shall undertake such teaching duties, if any, as may be required by the Principal of the School.

19. THERE shall be a position at the School to be designated as Senior Teacher Junior Classes in accordance with Section 65(1)(d) of the Private Schools Conditional Integration Act 1975 and the Controlling Authority of the School in advertising the position of Senior Teacher Junior Classes shall state that a willingness and ability to take part in Religious instruction appropriate to the Special Character of the School shall be a condition of appointment. Any person so appointed to the position of Senior Teacher

Junior Classes shall accept these requirements as a condition of appointment **PROVIDED HOWEVER** that in the event of the staffing entitlement of the School altering at any time during the currency of this Deed of Agreement then the position of Senior Teacher Junior Classes shall be determined in accordance with the then current staffing entitlement of the School under the Education Act 1964 and Regulations made thereunder and as is more particularly described in the **Fourth Schedule** hereto.

20. THERE shall be two (2) other teaching positions at the School which in accordance with Section 65(1)(c) of the Private Schools Conditional Integration Act 1975, shall be positions of importance carrying a responsibility for Religious instruction and an advertisement for those positions shall state that a willingness and ability to take part in Religious instruction appropriate to the Special Character of the School shall be a condition of appointment. Any person so appointed to these positions shall accept these requirements as a condition of appointment **PROVIDED HOWEVER** that in the event of the staffing entitlement of the School altering at any time during the currency of this Deed of Agreement then the number of teaching positions designated under Section 65(1)(c) of the Private Schools Conditional Integration Act 1975 as positions of importance carrying a responsibility for Religious instruction shall be determined in accordance with the then current staffing entitlement of the School under the Education Act 1964 and Regulations made thereunder and as is more particularly described in the **Fourth Schedule** hereto.

21. THE position of Deputy Principal at the School is agreed pursuant to Section 66 of the Private Schools Conditional Integration Act 1975 to be a special position that requires particular capabilities in the teacher appointed, namely to assist in planning and organising the courses and programmes at the School to ensure that they reflect the Special Character of the School and an advertisement for the position of Deputy Principal shall state that possession of these capabilities shall be a condition of appointment. Any person so appointed to the position of Deputy Principal shall accept these requirements as a condition of appointment.

22. THE Proprietor may with the consent of the Controlling Authority in accordance with Section 69(1) of the Private Schools Conditional Integration Act 1975 arrange for any retired teacher to undertake voluntary tasks to assist in the School with the teaching of Religious observances and Religious instruction appropriate to the Special Character of the School.

23. IT is agreed by and between the parties hereto that as Religious observances and Religious instruction form part of the Education with a Special Character provided by the School the Proprietor may employ any person as a Chaplain or otherwise, for the purposes of Religious observances or instruction and the provisions of Section 69(2) and (3) of the Private Schools Conditional Integration Act 1975 shall apply.

24. THE Proprietor of the School shall have the right to enter into an Agreement with the parents or other persons accepting responsibility for the education of a child providing that, as a condition of enrolment and attendance of that child at the School, the parents or other persons shall pay attendance dues established in respect of the School or group of Integrated Schools owned by the Proprietor or Proprietors of other Roman Catholic Integrated Schools at such rates and subject to such conditions as may be approved from time to time by the Minister, by notice in the New Zealand Gazette in accordance with Section 36 of the Private Schools Conditional Integration Act 1975.

25. THE School is a Primary School for boys and girls from new entrants to Form Two (2) and shall remain so until such time as an agreement to a change in this organisation of the School is reached between the Proprietor and the Minister and the parties hereto enter into a supplementary Deed of Agreement to give effect thereto.

26. WHERE any of the costs associated with the conduct of the Proprietor's land and buildings that are not part of the School premises cannot be separated from the costs associated with the operation of the School premises, the Proprietor and the School Committee and/or the

Controlling Authority shall contribute to such costs according to their respective use of the services and facilities.

27. THE Proprietor agrees to make available Blocks H, O, T, and W more particularly delineated on the plan forming part of the **Second Schedule** hereto for the use of the School until such time as rebuilding requirements outlined in the **Third Schedule** hereto are completed.

28. THE Proprietor agrees to maintain Blocks H, O, T and W more particularly described in **clause 27** so as to meet Department of Education and Ministry of Works and Development requirements during the period of their use by the School. The Controlling Authority shall be responsible for the running or operating costs associated with the use of the said Blocks in particular the power supply, water, sewerage, drainage and cleaning costs.

29. THE Proprietor agrees to maintain Block P more particularly described in the plan attached to the **Second Schedule** so as to meet Department of Education and Ministry of Works and Development requirements during the period of their use by the School. The Controlling Authority shall share with the Controlling Authority of John Paul II High School the running or operating costs associated with the use of the said Block in particular the power, supply, water, sewerage, drainage and cleaning costs in proportions according to their respective use.

30. NEITHER the Minister nor the Controlling Authority shall be responsible for maintenance or running or operating costs of Block V until such time as the said Block is demolished.

31. THE Proprietor shall not engage any teachers between the date of execution of this Deed of Agreement and the effective date of integration other than those whose names have already been notified by the Proprietor to the Director-General of Education without first obtaining the consent of the Director-General.

32. THE Proprietor shall reimburse the Minister for the payment of salary, wages and the proportion of School holiday pay due and paid by the Minister in respect of the 1983 School year to any person employed at the School up to the effective date of integration **PROVIDED THAT** the Proprietor shall not be required to reimburse the Minister in respect of any salary, wages and holiday pay which has been paid to teachers up to the date of integration by the Minister in accordance with the terms of the Minister's letter of 4th December 1980 to Archbishop Williams.

33. THE Minister shall subject to **clause 3(d) and (e) clause 28 clause 29 and clause 30** of this Deed of Agreement after the effective date hereof maintain the School premises and the associated facilities in a state of repair order and condition as for a comparable State school under the same Controlling Authority and provide for the maintenance of the chattels as though the School were a State School. The School shall be entitled to such furniture and equipment as the Controlling Authority supplies from time to time to comparable State Schools.

34. THE effective date of this Deed of Agreement shall be the 13th day of April One thousand nine hundred and eighty-three (1983).

35. ON and after the effective date specified in this Deed of Agreement the School shall be an integrated school in terms of the Private Schools Conditional Integration Act 1975.

IN WITNESS WHEREOF these presents have been executed the day and year first hereinbefore written.

X B PA

SIGNED by BRIAN PATRICK ASHBY)
THE ROMAN CATHOLIC BISHOP OF)
THE DIOCESE OF CHRISTCHURCH and)
sealed with his Seal of Office in the)
presence of:-)

B. P. Ashby

General Manager
Catholic Education Board.

SIGNED for and on behalf of HER)
MAJESTY THE QUEEN by MERVYN)
LANGLOIS WELLINGTON Minister of)
Education in the presence of:-)

Mervyn Langlois

M. J. Yelken
12 Hokianga Road
Wellington
(Private Secretary)

FIRST SCHEDULE

Description of total land, buildings and other improvements comprising the Proprietor's land of which the School premises form part

The Proprietor's Land

All that land, buildings and other improvements occupied by the Roman Catholic Bishop of the Diocese of Christchurch, situate in Alexander Street, Greymouth being known as part of **John Paul II High School** and **St. Patrick's School** and being more particularly described as follows and delineated in green on the plan forming part of the **Second Schedule** hereto.

FIRSTLY all that parcel of land containing more or less 0.4426 hectares situated in the Borough of Greymouth being part of Greymouth or Mawhera Maori Reserve 31 and more or less being Section 170 Block 24, and being all the land in Volume 3B Folio 993 (Westland Registry).

SECONDLY all that parcel of land containing more or less 405m² situated in the Borough of Greymouth being Sections 172D and 172E Block 24 Greymouth or Mawhera Maori Reserve and being all the land in Certificate of Title Volume 3B Folio 991 (Westland Registry).

THIRDLY all that parcel of land containing more or less 690m² situated in the Borough of Greymouth being part of Greymouth or Mawhera Maori Reserve 31 being Lots 1 and 2 on Deposited Plan 475 and being all the land in Certificate of Title Volume 3B Folio 988 (Westland Registry).

FOURTHLY all that parcel of land containing more or less 400m² situated in the Borough of Greymouth being part of Greymouth or Mawhera Maori Reserve 31 being Lot 1 on Deposited Plan 338 and being all the land in Certificate of Title Volume 3B Folio 989 (Westland Registry).

FIFTHLY all that parcel of land containing more or less 797m² situated in the Borough of Greymouth being part of Greymouth or Mawhera Maori Reserve 31 being Lot 2 on Deposited Plan 338 and Section 172A Block 24 and being all the land in Certificate of Title Volume 3B Folio 990 (Westland Registry).

SIXTHLY all that parcel of land containing more or less 2327m² situated in the Borough of Greymouth being part of Greymouth or Mawhera Maori Reserve 31 and being more or less Section 171 Block 24 and being all the land in Certificate of Title Volume 3B Folio 992 (Westland Registry).

SEVENTHLY all that parcel of land containing more or less 430m² situated in the Borough of Greymouth being part of Greymouth or Mawhera Maori Reserve 31 being Section 137F Block 24 and being all the land in Certificate of Title Volume 3B Folio 437 (Westland Registry).

EIGHTHLY all that parcel of land containing more or less 534m² situated in the Borough of Greymouth being part of Greymouth or Mawhera Maori Reserve 31 being part Section 140A Block 25 and being all the land in Certificate of Title Volume 3B Folio 998 (Westland Registry).

NINTHLY all that parcel of land containing more or less 556m² situated in the Borough of Greymouth being part of Greymouth or Mawhera Maori Reserve 31 being Section 168A Block 25 and being all the land in Certificate of Title Volume 3B Folio 1012 (Westland Registry).

TENTHLY all that parcel of land containing more or less 556m² situated in the Borough of Greymouth being part of Greymouth or Mawhera Maori Reserve 31 being Section 168B Block 25 and being all the land in Certificate of Title Volume 3B Folio 1011 (Westland Registry).

ELEVENTHLY all that parcel of land containing more or less 341m² situated in the Borough of Greymouth being part of Greymouth or Mawhera Maori Reserve 31 being Section 140B Block 25 and being all the land in Certificate of Title Volume 3B Folio 999 (Westland Registry).

TWELFTHLY all that parcel of land containing more or less 683m² situated in the Borough of Greymouth being part of Greymouth or Mawhera Maori Reserve 31 being Lot 1 on Deposited Plan 286 being part of Section 140B and also Lot 1 on Deposited Plan 330 being part Section 167B Block 25 and being all the land in Certificate of Title Volume 3B Folio 1006 (Westland Registry).

THIRTEENTHLY all that parcel of land containing more or less 531m² situated in the Borough of Greymouth being part of Greymouth or Mawhera Maori Reserve 31 being Section 168C Block 25 and being all the land in Certificate of Title Volume 3B Folio 1010 (Westland Registry).

FOURTEENTHLY all that parcel of land containing 658m² situated in the Borough of Greymouth being part of Greymouth or Mawhera Maori Reserve 31 being Section 167A Block 25 and being all the land in Certificate of Title Volume 3B Folio 1005 (Westland Registry).

FIFTEENTHLY all that parcel of land containing more or less 465m² situated in the Borough of Greymouth being part of Greymouth or Mawhera Maori Reserve 31 and being Lot 2 on Deposited Plan 330 and being part of Sections 167B and 167C Block 25 and being all the land in Certificate of Title Volume 3B Folio 1007 (Westland Registry).

SIXTEENTHLY all that parcel of land containing more or less 2934m² situated in the Borough of Greymouth being part of Greymouth or Mawhera Maori Reserve 31 and being more or less Section 169 Block 25 and being all the land in Certificate of Title Volume 3B Folio 1013 (Westland Registry).

SEVENTEENTHLY all that parcel of land containing more or less 159m² situated in the Borough of Greymouth being Section 385 formerly Arnott Land shown on sheet 7 of Deposited Plan 9 and being part Maori Reserve 31 and being all that land in Certificate of Title Volume 1B Folio 905 (Westland Registry).

Subject to

1. The implied rights of way (if any) appurtenant to every portion of land in this sub-division.

SECOND SCHEDULE

Description of land, buildings and other improvements comprising the School premises

The School Premises:

All that part of the Proprietor's land as described in the **First Schedule** hereto, delineated in red on the annexed plan of the Proprietor's land, which forms part of this Schedule, **TOGETHER WITH** all the School buildings and other improvements thereon.

ST PATRICK'S SCHOOL, GREYMOUTH

THIRD SCHEDULE

WORKS TO BE CARRIED OUT BY THE PROPRIETOR IN RELATION
TO THE INTEGRATED SCHOOL

These works are to be planned, executed and paid for by the proprietor subject to the provisions of this schedule in relation to the buildings and associated facilities to bring them up to the minimum standard for a comparable state school. All work is to be carried out by competent tradesmen or in a workmanlike manner to the Canterbury Education Board standards.

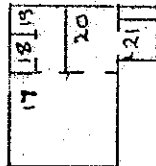
AGREED PHASING OF WORK TO BE COMPLETED BY:

SITE	AGREED PHASING OF WORK TO BE COMPLETED BY:					
	13.4.83	31.3.84	31.3.85	31.3.86	31.3.87	31.3.88
Upgrade grounds, fencing and associated facilities to education board standards.			x			
BLOCK L						
Exterior						
Fit foundation vents						
Repair all woodwork						
Paint						
Interior						
Replace curtains						
Supply light in toilet						
Paint						
Mechanical						
Upgrade heating in areas 17 and 20 to state school standards						
Electrical						
Renew VIR neutral in casing						
Replace all original wiring						
Install a CBEL unit in dental clinic						
Fire Protection						
Provide a CO2 fire extinguisher mounted on a wall bracket complete with standard marking plate	x					

Furniture	13.4.83	31.3.84	31.3.85	31.3.86	31.3.87	31.3.88
Upgrade furniture to education board standards						
<u>BUILDING REQUIREMENTS</u>						
Provide by new construction the following:						
Class teaching area of 455m ²)						
Resource workroom of 14m ²)						
Library/multipurpose room of 56m ²)						
Staffroom of 18.5m ²)						
Staff kitchen of 4.5m ²)						
Principal's office of 11m ²)						
School office of 8m ²)						
Casualty/sickroom of 9m ²)						
Storage of 28m ²)						
Staff and pupils' toilets to comply)						
with Drainage and Plumbing Regulations)						

13.8.87

ROOM		BLOCK L	AREA
17	18	19	
17 SURGERY			13.56 m ²
18 TOILET			
19 STAFF ROOM			3.88 m ²
20 WAITING ROOM			5.18 m ²
21 ENTRANCE			
TOTAL AREA =			29.58 m ²



DEPARTMENT OF EDUCATION		Drawing No:	Scale:
buildings division: integration of private schools		EIP 250 02	1:300
School: ST PATRICK'S SCHOOL, GREYMOUTH		Date:	Sheet 1 of 1
		16 March 1983	
		Revision	Drawn:
			Chuck W

FOURTH SCHEDULE

of staff appointments to St Patrick's School Greymouth

Schools Conditional Integration Act 1975 being special positions relating to the special character of the School

Under Sections 65(1) & 66 of the Private Schools Conditional Integration Act 1975 Number of Staff to be so Appointed

Principal to be Appointed under S.65 (1) (a) Private Schools Conditional Integration Act 1975 Number of Staff to be so Appointed

Director of Religious Studies to be Appointed under S.65 (1) (b) Private Schools Conditional Integration Act 1975 Scale A or B1 or Higher

Senior Teacher Junior Classes to be Appointed under S.65 (1) (d) Private Schools Conditional Integration Act 1975 Number of Staff to be so Appointed

Religious Instruction Positions of Importance Number of other teachers to be Appointed under S.65 (1) (c) of Private Schools Conditional Integration Act 1975 Number of Staff to be so Appointed

Deputy Principal to be Appointed under S.66 Private Schools Conditional Integration Act 1975 Number of Staff to be so Appointed

Column 1	Column 2	Column 3	Column 4	Column 5	Column 6
1	1	-	-	-	-
2	1	-	-	1	-
3	1	-	-	1	-
4	1	-	-	2	-
5	1	1	-	1	-
6	1	1	-	2	1
7	1	1	1	1	1
8	1	1	1	2	1
9	1	1	1	3	1
10	1	1	1	3	1
11	1	1	1	4	1
12	1	1	1	4	1
13	1	1	1	5	1
14	1	1	1	6	1
15	1	1	1	7	1
16	1	1	1	7	1
17	1	1	1	8	1
18	1	1	1	8	1
19	1	1	1	9	1
20	1	1	1	9	1
21	1	1	1	9	1
22	1	1	1	10	1
23	1	1	1	10	1
24	1	1	1	11	1
25	1	1	1	11	1
26	1	1	1	11	1
27	1	1	1	12	1
28	1	1	1	12	1
29	1	1	1	13	1
30	1	1	1	13	1

NOTES:

- The above Schedule has been prepared for use when the staffing entitlement of the School alters at any time during the currency of this Deed of Agreement to enable the parties hereto by reference to the total staffing entitlement of the School in Column (1) hereof to determine the number of teaching positions at the School which in terms of Section 65 (1) (a), (b), (c) and (d) of the Private Schools Conditional Integration Act 1975 and Clauses 14, 15, 17 and 18 of this Deed carry a responsibility for Religious Instruction and require a willingness and ability to take part in Religious instruction or in terms of Section 66 of the Private Schools Conditional Integration Act 1975 require a particular capability in the teacher as described in Clause 19 of the Deed of Agreement. The Schedule to be read across from left to right.
- Column (5). Section 65 (1) (c) must apply to the number of other positions indicated in the Column and may be made up of teachers appointed under the Initial Appointments Scheme and or other permanent appointments. It is recommended that where the School has a total staffing entitlement of up to eleven there should be at least one appointed as a permanent Scale A Teacher and in schools with a total staffing entitlement of between twelve and fifteen there should be two appointed as permanent Scale A Teachers and in schools with a total staffing entitlement of between fifteen and twenty-one there should be at least three appointed as permanent Scale A Teachers.
- The School as at the effective date hereof has a staffing entitlement of Nine (9) Teachers