

THIS DEED OF AGREEMENT is made on the 16 day of July
One thousand nine hundred and eighty one (1981)
BETWEEN THE ST. PATRICK'S COLLEGE WELLINGTON TRUST
BOARD a body corporate registered under the Religious
Charitable and Education Trusts Act 1908 (hereinafter with
its successors referred to as "the Proprietor") of the
first part AND HER MAJESTY THE QUEEN acting by and through
the Minister of Education (hereinafter referred to as "the
Minister") of the second part

WHEREAS

- A The Proprietor is the owner of St. Patrick's College, Kilbirnie,
Wellington (hereinafter referred to as "the School")
- B The School is a Roman Catholic Secondary School for boys
only from Form Three (III) to Form Seven (VII) offering
Education with a Special Character.
- C The School was established in 1885 and up to the effective
date of integration was conducted and staffed by members of
the Roman Catholic Religious Order of Men known as the
Society of Mary (also known as the Marist Fathers). The
Society of Mary or Marist Fathers bring to the School the
special characteristics of their Order as are more
particularly described in the Fifth Schedule hereto. The
said Order will continue after the effective date of
integration to offer teaching staff to the School, so long
as it has members available for that purpose.
- D The Minister and the Proprietor have agreed to enter into
this Deed of Agreement pursuant to the Private Schools
Conditional Integration Act 1975, whereby the School is to
be established as an integrated School.

NOW THIS DEED OF AGREEMENT WITNESSETH THAT IT IS HEREBY
COVENANTED AGREED AND DECLARED BY AND BETWEEN THE PARTIES
HERETO AS FOLLOWS:

1. THAT the Minister and Proprietor HEREBY AGREE that the
School is to become an integrated School pursuant to the Private
Schools Conditional Integration Act 1975.

[Handwritten signature]

[Handwritten signature]

2. THE School's Special Character as is hereinafter described, shall incorporate the Education with a Special Character as provided in the School AND IT IS HEREBY AGREED AND DECLARED that the School shall at all times in the future be conducted and operated so as to maintain and preserve the School's Special Character and these presents shall be interpreted so as to maintain and preserve the Special Character of the School.

3. ON behalf of the Proprietor it is hereby agreed that:-

- (a) The Proprietor is the owner of all the land and improvements more particularly described in the First Schedule hereto (hereinafter referred to as "the Proprietor's land") and of which for the purposes of this Deed of Agreement, the School premises form part only. The School premises for the purposes of this Deed of Agreement being the land and improvements more particularly described in the Second Schedule hereto (hereinafter referred to as "the School premises").
- (b) The Proprietor shall set apart and appropriate as owner all the School premises and all the chattels and other assets of the Proprietor associated with the School exclusively for the purposes of the School as an integrated School, so that the Controlling Authority of the School shall have the exclusive right to the possession and use of the School premises and chattels -

PROVIDED THAT -

- (i) At the request of the Proprietor, the Board of Governors may grant the use of the School premises and chattels to the Proprietor or other person or persons at any time when the School premises and chattels are not required for School purposes and the Board of Governors shall not unreasonably or arbitrarily withhold its consent. The Board of



Governors may require the Proprietor or other person or persons to pay a reasonable fee to the Board of Governors as a condition of such use.

- (ii) With the consent of the Proprietor, the Board of Governors may grant the use of the School premises and chattels to other person or persons at any time when the School premises and chattels are not required for School purposes and the Proprietor shall not unreasonably or arbitrarily withhold its consent. The Board of Governors may require any such person or persons to pay a reasonable fee to such Board of Governors as a condition of such use.
- (iii) As at the effective date certain chattels used in conjunction with the School and not purchased with money appropriated by Parliament represent donations presentations or loans to the School and/or have some special intrinsic and/or historic value and it is acknowledged that such chattels shall remain the exclusive property or responsibility of the Proprietor notwithstanding that the Proprietor may continue to allow the School the use of them. Such chattels are more particularly described in the Third Schedule hereto (hereinafter referred to as "the Proprietor's chattels").
- (c) The Proprietor shall accept and meet the liability for all mortgages, liens and other charges upon the land and buildings comprising the School premises.
- (d) The Proprietor shall plan, pay for, and execute the improvements described in the Fourth Schedule hereto, to the School premises, so as to bring the School buildings and associated facilities forming part of the School premises up to the minimum standard for comparable State Schools prevailing at the effective date of this Deed of Agreement. Such improvements to be carried out in accordance with the dates specified against such improvements in the Fourth Schedule hereto. The Proprietor shall

*See
Pg 10*

[Signature]

upon completion of any improvements to electrical services described in the Fourth Schedule hereto arrange for the local Electrical Supply Authority to inspect the School premises in terms of Regulation 45 of the Electrical Supply Regulations 1976.

- (e) The Proprietor shall plan, execute and pay for such capital works and associated facilities at the School as may be approved or required, from time to time, by the Minister pursuant to Section 40 (2) (d) of the Private Schools Conditional Integration Act 1975.
- (f) The Proprietor may own or hold upon trust, and control and maintain, any land, buildings and associated facilities that, although not part of the integrated school premises in terms of this Deed of Agreement are regarded by the Proprietor as appropriate to maintain the Special Character of the School.
- (g) The Proprietor shall insure all the buildings forming part of the School premises and the Proprietor's chattels owned or held upon trust for the purposes of the School and the other assets owned by the Proprietor for the purposes of the School against risks normally insured against, in some responsible insurance office in New Zealand, and further acknowledges the obligation on it created by Section 40 (2) (h) of the Private Schools Conditional Integration Act 1975.
- (h) No person employed at the School and paid for his services in whole or in part out of moneys appropriated by Parliament, shall be paid by the Proprietor or its servants or agents any remuneration additional to that provided for by the Private Schools Conditional Integration Act 1975 or shall be granted or permitted any condition of service more favourable than that permitted in the case of a person employed in a comparable position in a State School PROVIDED HOWEVER that a teacher to whom the provisions of Section 71 of the Private Schools Conditional Integration Act 1975 apply, shall continue to be paid no less than the same salary, and be accorded the same status, as he received or was accorded on the day before the effective date of the integration of the School.

See
PJH THE land and buildings constituting the School premises are subject to the mortgages, debts, liens, encumbrances, easements, *9*

licences, restrictions and other matters which affect the title to or enjoyment of the land and have the appurtenances or benefits attaching to the land more particularly described in the First Schedule hereto.

5. THE Special Character of the School is that it is a Roman Catholic School established by the Roman Catholic Religious Order of men known as the Society of Mary (also known as the Marist Fathers) for the Roman Catholic Community of the Archdiocese of Wellington, which promotes and supports the School and of which the School is part, to provide and to continue to provide Education with a Special Character, that is to say:-

The School is a Roman Catholic School in which the whole School is community through the general School programme and in its Religious instructions and observances, exercises the right to live and teach the values of Jesus Christ. These values are as expressed in the Scriptures and in the practices, worship and doctrine of the Roman Catholic Church, as determined from time to time by the Roman Catholic Archbishop of the Archdiocese of Wellington.

6. THE Proprietor of the School subject to the provisions of this Deed of Agreement:-

- (a) Shall continue to have the responsibility to supervise the maintenance and preservation of the Education with a Special Character provided by the School;
- (b) Shall continue to have the right to determine from time to time what is necessary to preserve and safeguard the Special Character of the Education provided by the School and described in this Deed of Agreement;
- (c) May invoke the powers conferred on it by the Private Schools Conditional Integration Act 1975, if in the opinion of the Proprietor the Special Character of the School as defined and described in this Deed of Agreement has been or is likely to be jeopardised or the Education with a Special Character provided by the School as defined and described in this Deed of Agreement is no longer preserved and safeguarded.

*See
P. 10*

[Signature]

7. (a) THE Controlling Authority of the School shall be a Board of Governors as constituted pursuant to the provisions of Section 51 of the Education Act 1964 and Regulations made thereunder. Such Board of Governors shall consist of eleven (11) members, such eleven (11) members being:-

(i) One (1) member appointed by the Education Board of the Wellington Education District.

(ii) One (1) member elected by the teachers of the School PROVIDED HOWEVER that no member so elected may be appointed as Chairman or Deputy Chairman of the Board.

(iii) Five (5) members elected by the parents of the pupils attending the School.

(iv) Four (4) members who shall be representatives of the Proprietor and appointed by it.

(b) Any election conducted pursuant to Section 8 (5) of the Private Schools Conditional Integration Act 1975 shall be conducted as nearly as possible in the manner prescribed by the Secondary School Boards Administration and Employment Regulations 1965 and any regulations made in amendment thereof or substitution therefor, and the provisions of those Regulations shall, with any necessary modification, be applied accordingly.

(c) The control and management of the School shall be exercised subject to the provisions of Section 25 (6) of the Private Schools Conditional Integration Act 1975.

8. THE School had a roll of seven hundred and fifty seven (757) pupils as at the 1st day of March 1981 being the year when the roll figures were last compiled. It is agreed by and between the parties hereto that the maximum roll of the School shall be eight hundred (800) pupils.

SAW
PJON

[Signature]

9. THE Proprietor agrees that pursuant to Paragraphs (d) and (e) of Clause 3 of this Deed of Agreement it will bring the School up to the minimum standard of accommodation laid down from time to time by the Director-General for a comparable State School.

10. (a) PREFERENCE of enrolment at the School under Section 29 (1) of the Private Schools Conditional Integration Act 1975 shall be given only to those children whose parents have established a particular or general religious connection with the Special Character of the School and the Controlling Authority shall not give preference of enrolment to the parents of any child unless the Proprietor has stated that those parents have established such a particular or general religious connection with the Special Character of the School.
- (b) In accordance with Section 7 (6) (h) of the Private Schools Conditional Integration Act 1975 unless the Proprietor and the Regional Superintendent of Education otherwise agree and subject to places being available, the number of pupils whose parents do not have a preference of enrolment at the School in accordance with the provisions of Section 29 (1) of the Private Schools Conditional Integration Act 1975 shall be limited at all times to forty (40) pupils out of the total roll of the School and the Board of Governors shall not enrol more than that number PROVIDED THAT to maintain and preserve the Special Character of the School the Board of Governors in classifying such pupils so enrolled shall endeavour to reasonably distribute them through the range of classes offered by the School.
- (c) Wherever any difficulty arises related to enrolment at the School in terms of Section 52 of the Private Schools Conditional Integration Act 1975, it may be referred to the appropriate Secondary Enrolment Review Committee pursuant to the provisions of the said section.

11. IT is agreed by and between the parties hereto that as Religious observances and Religious instruction form part of the Education with a Special Character provided by the School

juw
PJG

[Signature]

Religious observances and Religious instruction in accordance with the determination made from time to time by the Roman Catholic Archbishop of the Archdiocese of Wellington shall continue to form part of the School programme in accordance with Sections 31 and 32 of the Private Schools Conditional Integration Act 1975.

12. THE Proprietor, together with its servants, agents and licensees, shall, subject to the proviso to Section 40 (2) (i) of the Private Schools Conditional Integration Act 1975, have at all reasonable times access to the School to ensure that the Special Character of the School is being maintained.

13. THE Proprietor, together with its servants, agents and licensees shall have at all reasonable times access to the land and buildings of the School constituting the School premises sufficient to enable it to exercise the powers and carry out the responsibilities vested in it and imposed on it by the Private Schools Conditional Integration Act 1975 and by this Deed of Agreement.

14. AN advertisement for the position of Principal of the School shall in accordance with Section 65 (1) (a) of the Private Schools Conditional Integration Act 1975 state that a willingness and ability to take part in Religious instruction appropriate to the Special Character of the School shall be a condition of appointment. Any person so appointed to the position of Principal shall accept these requirements as a condition of appointment. The Principal so appointed shall accept and recognise a responsibility to maintain and preserve the Special Character of the School.

15. THERE shall be a position at the School to be designated Director of Religious Studies in accordance with Section 65 (1) (b) of the Private Schools Conditional Integration Act 1975, which position shall be a position of responsibility and part of the normal staffing entitlement of the School as established by Regulations made under the Education Act 1964 and an advertisement for that position shall state that a willingness and ability to

*Law
Pfor*

[Signature]

take part in Religious instruction appropriate to the Special Character of the School shall be a condition of appointment. Any person appointed to the position of Director of Religious Studies shall accept these requirements as a condition of appointment. The Director of Religious Studies shall give guidance and provide effective leadership in Religious instruction and observances throughout the School.

16. A person appointed as aforesaid to the position of Director of Religious Studies at the School, shall undertake such teaching duties, if any, as may be required by the Principal of the School.

17. THE staffing entitlement of the School as at the 1st day of March One thousand nine hundred and eighty one (1981) was thirty six decimal six (36.6) positions (excluding the Principal and the Director of Religious Studies) of which there shall be fifteen (15) teaching positions at the School which in accordance with Section 65 (1) (c) of the Private Schools Conditional Integration Act 1975 shall be positions of importance carrying a responsibility for Religious instruction and an advertisement for those positions shall state that a willingness and ability to take part in Religious instruction appropriate to the Special Character of the School shall be a condition of appointment. Any person so appointed to these positions shall accept these requirements as a condition of appointment. In the event of the staffing entitlement of the School altering at any time during the currency of this Deed of Agreement then the number of teaching positions designated under Section 65 (1) (c) of the Private Schools Conditional Integration Act 1975 as positions of importance carrying a responsibility for Religious instruction shall be the same proportion to the nearest whole number of the other teaching positions as fifteen (15) is to thirty six decimal six (36.6) as hereinbefore provided.

18. THE position of Deputy Principal at the School is agreed pursuant to Section 66 of the Private Schools Conditional Integration Act 1975 to be a special position that requires particular capabilities in the teacher appointed, namely to assist in planning and organising the courses and programmes at the School to ensure that they reflect the Special Character of the School and an advertisement for the position of Deputy Principal shall state that possession of these capabilities shall

*See
BFO*

be a condition of appointment. Any person so appointed to the position of Deputy Principal shall accept these requirements as a condition of appointment.

19. THE Proprietor may with the consent of the Board of Governors in accordance with Section 69 (1) of the Private Schools Conditional Integration Act 1975 arrange for any retired teacher to undertake voluntary tasks to assist in the School with the teaching of Religious observances and Religious instruction appropriate to the Special Character of the School.

20. IT is agreed by and between the parties hereto that as Religious observances and Religious instruction form part of the Education with a Special Character provided by the School the Proprietor may employ any person as a Chaplain or otherwise, for the purposes of Religious observances or instruction and the provisions of Section 69 (2) and (3) of the Private Schools Conditional Integration Act 1975 shall apply.

21. THE Proprietor of the School shall have the right to enter into an Agreement with the parents or other persons accepting responsibility for the education of a child providing that, as a condition of enrolment and attendance of that child at the School, the parents or other persons shall pay attendance dues established in respect of the School or group of Integrated Schools owned by the Proprietor or Proprietors of other Roman Catholic Integrated Schools at such rates and subject to such conditions as may be approved from time to time by the Minister, by notice in the New Zealand Gazette in accordance with Section 36 of the Private Schools Conditional Integration Act 1975.

22. THE School is a Secondary School for boys from Form Three (III) to Form Seven (VII) and shall remain so until such time as an agreement is reached between the Proprietor and the Minister and the parties hereto enter into a supplementary Deed of Agreement to give effect thereto.

gaw
PJOM

[Signature]

23. WHERE any of the costs associated with the conduct of the Proprietor's land that is not part of the School premises cannot be separated from the costs associated with the operation of the School premises, the Proprietor and the Board of Governors shall contribute to such costs according to their respective use of the services and facilities.

24. IT is acknowledged by and between the parties hereto pursuant to Clause 23 hereof that certain of the services and facilities on or serving the Proprietor's land and the other improvements thereon are used in common for the purpose of the School premises and as is more particularly delineated on the plan forming part of the Second Schedule hereto. In particular, the access driveway from Evans Bay Parade, the water supply, the power supply, the gas supply, the sewerage and stormwater drainage systems are all used in common and the costs of maintaining such services and facilities shall be apportioned as provided in Clause 23 hereof. If practicable the power supply to the School premises shall be separately metered at the expense of the Proprietor. Where such services or facilities are wholly or partly situated on the Proprietor's land or within improvements thereon but outside the School premises the Proprietor will continue to make such services available to the School premises, and where such services lie wholly or partly within the School premises the Board of Governors will do nothing to prevent the availability of those services to that part of the Proprietor's land and improvements which are not part of the School premises.

25. THERE is reserved to the Proprietor, and persons authorised by it, the full and free right and liberty to have all reasonable access over the School premises to the non-integrating areas within the buildings on the Proprietor's land more particularly specified in paragraphs (1) to (3) of the saving and exception in the Second Schedule hereto.

rw
PJO

[Signature]

26. IN accordance with an agreement between the Proprietor and the Wellington City Corporation the City Corporation makes available to the School Evans Bay Park and by arrangement other recreational facilities for the purpose of sports and physical education and it is hereby agreed by and between the parties hereto that should the aforesaid recreational facilities cease to be available to the School the Minister will not be responsible for the provision of additional grass playing fields.

27. THE Proprietor shall not engage any teachers between the date of execution of this Deed of Agreement and the effective date of integration other than those whose names have already been notified by the Proprietor to the Director-General of Education without first obtaining the consent of the Director-General.

28. THE Proprietor shall reimburse the Minister for the payment of salary, wages and the proportion of School holiday pay due and paid by the Minister in respect of the 1981 School year to any person employed at the School up to the effective date of integration

29. THE Minister shall subject to Clauses 3 (d) and (e) of this Deed of Agreement after the effective date hereof maintain the School premises and the associated facilities in a state of repair order and condition as for a comparable State School and subject to Clause 3 (b) (iii) hereof provide for the maintenance of the chattels as though the School were a State School

PROVIDED THAT

- (a) The Proprietor shall pay the maintenance costs of the incandescent lighting in the corridor and the hall described as Areas 33 and 118 respectively in the drawings forming part of the Fourth Schedule hereto and the electric hand-driers installed in the School premises;
- (b) The Proprietor shall pay half of the maintenance costs on the air conditioning unit in the Todd Theatre described as Area 71 in Drawing No EIS 079 04 forming part of the Fourth Schedule hereto;

P. Jones

[Signature]

- (c) The Proprietor and the Minister shall share equally the costs of maintaining and decorating those areas described as Staff-room, Area 9; Administration, Areas 13-28; Lecture Room No.2, Area 39; Lecture Room No. 1, Area 71; Auditorium, Areas 118-123; and Library, Areas 132-136 and 143 in the drawings forming part of the Fourth Schedule hereto to the standard required of a comparable State school.
- (d) The Proprietor and the Minister shall share in the costs of maintaining the roof and exterior of each of the buildings described as Blocks A, B, D and M on the Plan forming part of the Second Schedule hereto to the standard required for a comparable State School in the following proportion:

The proportion of the floor area of the non-integrated part to the floor area of the integrated part of each building respectively.

The School shall be entitled to such furniture and equipment as the Minister supplies from time to time to comparable State schools.

30. THE effective date of this Deed of Agreement shall be the twentieth day of July 1981.

31. ON and after the effective date specified in this Deed of Agreement the School shall be an integrated School in terms of the Private Schools Conditional Integration Act 1975.

IN WITNESS WHEREOF these presents have been executed the day and year first hereinbefore written.

for
PJO

[Signature]

THE COMMON SEAL of the SAINT PATRICK'S
COLLEGE WELLINGTON TRUST BOARD

was hereunto affixed by and
in the presence of:



..... J. E. Weir Trustee

..... B. J. O'Neill Trustee

SIGNED FOR AND ON BEHALF OF HER MAJESTY

THE QUEEN by MERVYN LANGLOIS WELLINGTON

Minister of Education in the presence of :

[Signature]

[Signature]
Public Servant
Wellington

FIRST SCHEDULE

Description of total land buildings and other improvements comprising the Proprietor's land of which the School premises form part.

THE PROPRIETOR'S LAND

All that land school buildings residence offices chapel and other improvements, the registered Proprietor whereof is St. Patrick's College Wellington Trust Board, described as:

All that parcel of land containing 3.2949 hectares more or less situate in the City of Wellington being Lot 1 on Deposited Plan 45771 and being all of the land in Certificate of Title Volume 16C Folio 895 (Wellington Registry).

SUBJECT TO:

- (1) Section 8 of the Mining Act 1971 and section 168A of the Coal Mines Act 1925.
- (2) Mortgage 197853.1 to the Housing Corporation of New Zealand.

There is an unregistered mortgage with the Society of Mary Trust Board.

juw
Pfom

[Signature]

SECOND SCHEDULE

Description of land buildings and other improvements comprising the School premises.

THE SCHOOL PREMISES

All the Proprietor's land as described in the First Schedule hereto TOGETHER WITH all the School buildings and other improvements now standing or erected thereon and as shown on the annexed Plan, which Plan forms part of this Schedule SAVE AND EXCEPT the following parts of Blocks A, B, D, E and M as shown on the said Plan:

Those rooms corridors and other areas described as:

- (1) 'Part Block A Not To Be Integrated', 'Part Block D Not To Be Integrated' and Area 1 (all of the garages) on drawing No EIS 079 02 forming part of the Fourth Schedule hereto;
- (2) 'Fathers' Study/Bedrooms Not To Be Integrated' on drawing No EIS 079 07 forming part of the Fourth Schedule hereto;
- (3) 'Block B Chapel Not To Be Integrated' and 'Sacristy Not To Be Integrated' on drawing No EIS 079 08 forming part of the Fourth Schedule hereto;
- (4) 'Part Block M Not To Be Integrated' (all of Block M other than Areas 195 and 196) on drawing No EIS 079 11 forming part of the Fourth Schedule hereto.

TOGETHER WITH a reservation in favour of those excepted portions of full rights of access inter se and of ingress and egress to and from the excepted portions over the access thereto from and to Evans Bay Parade, Wellington.

sw
8/10

[Handwritten signature]

THIRD SCHEDULE

All those chattels of the Proprietor which in terms of Clause 3 (b) (iii) of this Deed of Agreement represent donations presentations or loans to the School and/or have some special intrinsic and/or historic value to the School and which chattels shall remain the exclusive property or responsibility of the Proprietor as herein provided and being more particularly described as follows:

SPC Rugby banner presented 1888

Silver trowel presented by Messrs Murdoch and Rose to
Dr Redwood, 1884

Whale bone patu

Oil painting 'Mary in Glory' presented by Count Jouffroy
d'Abbans 1887

Oil painting Mt Cook by Orange

2 Ink drawings, St Patrick's College, Wellington. signed M. Matthews

Water colour, St Patrick's College, Wellington. signed Nugent Welch

Oil painting, Father Knight S.M. signed, Julia Lynch, 1963

Water colour, St Patrick's College, Wellington, by Aubrey, 1891

Oil painting, Fr K. Maher S.M. by W. Perry

Coloured photograph Dr D. Kennedy S.M. Rector 1909-1912

Photograph "first provincial council 1899"

Photograph Bishop Redwood, inscribed and signed, made by Gendraud
Clermont-Ferrand

Roll-top oak desk, 9 drawers

Oil painting St Jerome - Doctor presented by Count Jouffroy d'Abban

Ink drawing St Patrick's Wellington, 1934 signed F.O. Ellis

Ink drawing, St Patrick's Silverstream, 1934 " "

Reproduction le Venerable J.C. Colin, fondateur de la Societe de
Marie, 1790 - 1875. phot. Victoire

Oil painting, copy of Coreggio presented by John Curnin, 1888

Oil painting, landscape " " 1880

1 - "St Patrick's College, Wellington, 1888-1935" Jubilee book No.155

Painting, Very Rev. F.J. Watters, S.M., DD. signed Lindauer

Tapestry, map of New Zealand with coats-of-arms and other
decorations

Bust, marble and stand, Archbishop Redwood

Painting, Cardinal Moran

Painting, Archbishop Redwood, S.M. Archbishop of Wellington.,
1877 - 1935 Founder of St Patrick's College, 1884

Painting "Archbishop Redwood in his 96th year" presented by

the Old Boys' Association to mark the golden jubilee of the foundation of the College, June 1938. (On loan from the National Gallery)

2 metal statues, 43 cm in height, golden coloured

a) The Mother and Child

b) St Joseph

*for
P. J. O.*

[Signature]

FOURTH SCHEDULE

FOURTH SCHEDULE

Bill
P. 40m

AGREED PHASING OF WORK TO BE COMPLETED BY

- 19 -

20.7.81	31.3.82	31.3.83	31.3.84	31.3.85	31.3.86
<p><i>See PJO</i></p> <p>BLOCK C <u>Structural</u> Strengthen structure as and when required by MWD</p> <p>Electrical <u>Library mezzanine</u> Upgrade incandescent lighting to correct shadowing</p> <p>BLOCK E <u>Structural</u> Strengthen structure as and when required by MWD</p> <p>BLOCK F <u>Mechanical</u> <u>Boiler Room</u> Fit seismic restraint valve in gas supply line just outside boiler room</p> <p>BLOCK G Area 62/63 Install master gas turn off valve on exit door side of teacher's desk and label appropriately</p> <p>Electrical Areas 54, 57, 59, 63, 161 and 163 Upgrade power outlets in stainless steel bench upstands to state school standards Install CBEL units in all laboratories to state school standards</p> <p>Fire Protection Phase out BCF type extinguishers in laboratories and replace with CO₂ units Incorporate nipple into the valve and feed pipe junction of fire hose reel opposite area 164 Block G</p>	<p>x</p> <p>x</p> <p>x</p> <p>x</p> <p>x</p>				

- 21 -

20.7.81	31.3.82	31.3.83	31.3.84	31.3.85	3.13.86
<p><i>Joe</i> <u>BLOCK H</u> <u>Interior</u> <u>Area 84</u> Protect plastic ducting pipe with an approved material Line welding bay with an approved fire rating material eg Harditherm or similar heat resistant linings</p>	x				
<p><u>Electrical</u> <u>Area 83/84</u> Upgrade workshop lighting to state school standards</p>	x				
<p><u>BLOCK J</u> <u>Structural</u> Strengthen bracing to MWD standards</p>					
<p><u>BLOCK M (areas 195 & 196)</u> <u>Structural</u> Review building under wind load and adequately improve</p>		x			
<p><u>Electrical</u> Fit check meter to sub-board in area 196</p>	x				
<p><u>Fire Protection</u> Provide 1 x 5kg Dry Powder extinguisher in area 196</p>	x				
<p><u>GENERAL</u> Replace flush bolts fitted to power and telephone switchboard cupboards and other cupboard doors with latchsets</p>	x				
<p><u>Structural - General</u> Brace and tie all suspended ceilings as and when required by MWD.</p>	x				

AGREED PASSING OF WORK TO BE COMPLETED BY

Jul
BUILDING REQUIREMENTS
Provide the following facilities by remodelling the existing accommodation:

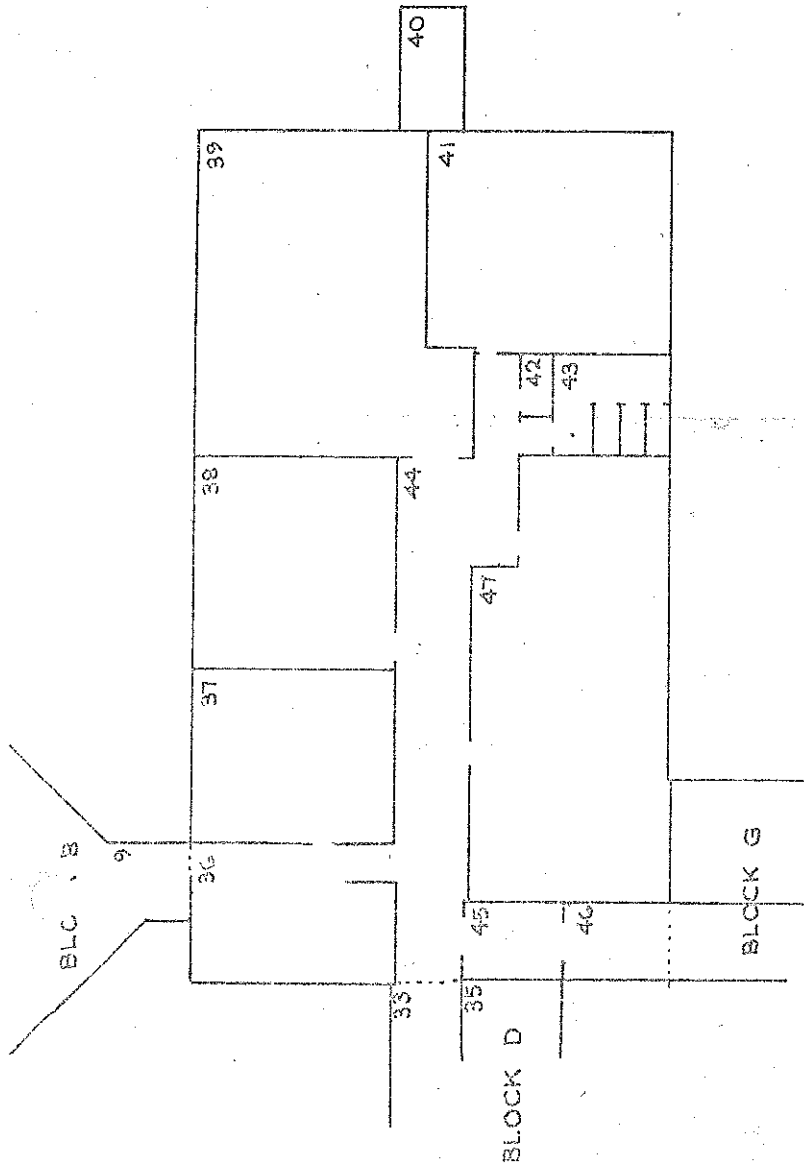
1 HOD office	code size m2)
Science Technicians room	7.5)
(F6 and 7))
Project store (art/crafts)	17)
Art and crafts store	19)
Timetable room	21)
Staff restroom	14)
Resource/storage (F6 and 7)	4.5)
Maths workroom	19)
Language store	14)
	9.5)

FURNITURE AND EQUIPMENT

Provide furniture and equipment to state school standards in the following areas:

AV Technicians room)
Science Technicians room)
Art and Craft room)
Draughting room)
Gymnasium)
Senior Biology laboratory)
Senior Chemistry laboratory)
Senior Physics laboratory)

20.7.81	31.3.82	31.3.83	31.3.84	31.3.85	31.3.86
		x			
		x			



ROOM	BLOCK E	AREA
36	LOBBY	
37	STAFF WORKROOM	51.59 m ²
38	CLASSROOM	64.74 m ²
39	LECTURE ROOM	119.68 m ²
40	STAIRS	
41	CLASSROOM	79.90 m ²
42	CLEANERS STORE	3.12 m ²
43	TOILETS	
44	CORRIDOR	
45	CORRIDOR	
46	CORRIDOR	
47	COMMON ROOM	124.72 m ²

TOTAL AREA BLOCK E 643.04 m²

GROUND FLOOR

DEPARTMENT OF EDUCATION
buildings division: integration of private schools
School: ST PATRICK'S COLLEGE, WELLINGTON

Drawing No:	EIS 079 03	Scale:	1:300
Date:	3 SEPTEMBER 1979	Drawn:	22 OCTOBER 1980
Revision:			

gaw
PJH

[Signature]

BLOCK D

BLOCK E

BLOCK G

ROOM	AREA
48 SEMINAR	22.56m ²
49 VICE RECTOR	20.68m ²
50 H.O.D.	15.51m ²
51 STAIRS	6.6m ²
52 STORE	92.92m ²
53 COVERED WAY	16.06m ²
54 GENERAL SCIENCE	4.18m ²
55 PREP.	73.6m ²
56 CLEANER	11.07m ²
57 SENIOR PHYSICS	73.6m ²
58 DARK ROOM	11.07m ²
59 SENIOR BIOLOGY	73.6m ²
60 CORRIDOR	6.38m ²
61 BOOK STORE	13.64m ²
62 PREP	92.92m ²
63 GENERAL SCIENCE	27.0m ²
64 FEMALE STAFF TOILETS	20.7m ²
65 CASUALTY/SICK BAY	21.15m ²
66 BOOK STORE	
67 SEMINAR	
TOTAL AREA BLOCK G	790.56m²

BLOCK F

ROOM	AREA
68 LOBBY	22.62m ²
69 A.N. STORE	139.46m ²
70 LOBBY	12.96m ²
71 LECTURE ROOM	9.45m ²
72 STORE	13.23m ²
73 PROJECTOR ROOM	
74 STORE	
TOTAL AREA BLOCK F	257.84m²

GROUND FLOOR

BLOCK H

DEPARTMENT OF EDUCATION
buildings division: integration of private schools
School: ST PATRICK'S COLLEGE, WELLINGTON

Drawing No: EIS 079 04

Scale: 1:300

Date:

31 AUGUST 1979

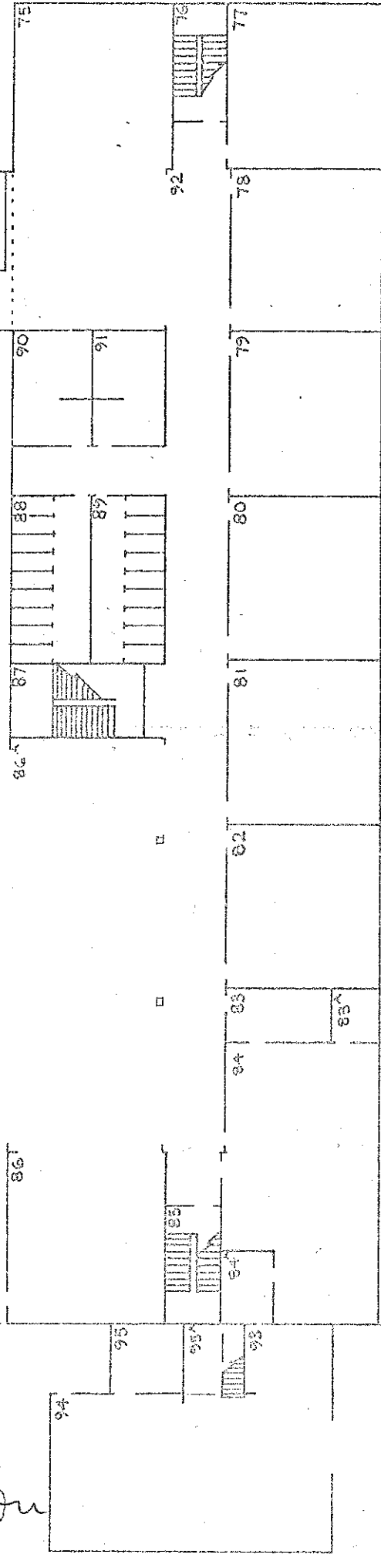
REVISION

22 OCTOBER 1980

Drawn:

288

See P/100



ROOM	AREA
93 STORAGE BAY	14.19m ²
94 WOODWORK SHOP	121.46m ²
95 TEACHER RESOURCE	11.55m ²
95A MEZZANINE	18.9m ²
TOTAL AREA BLOCK L	155.45m ² (GRD. FLOOR)

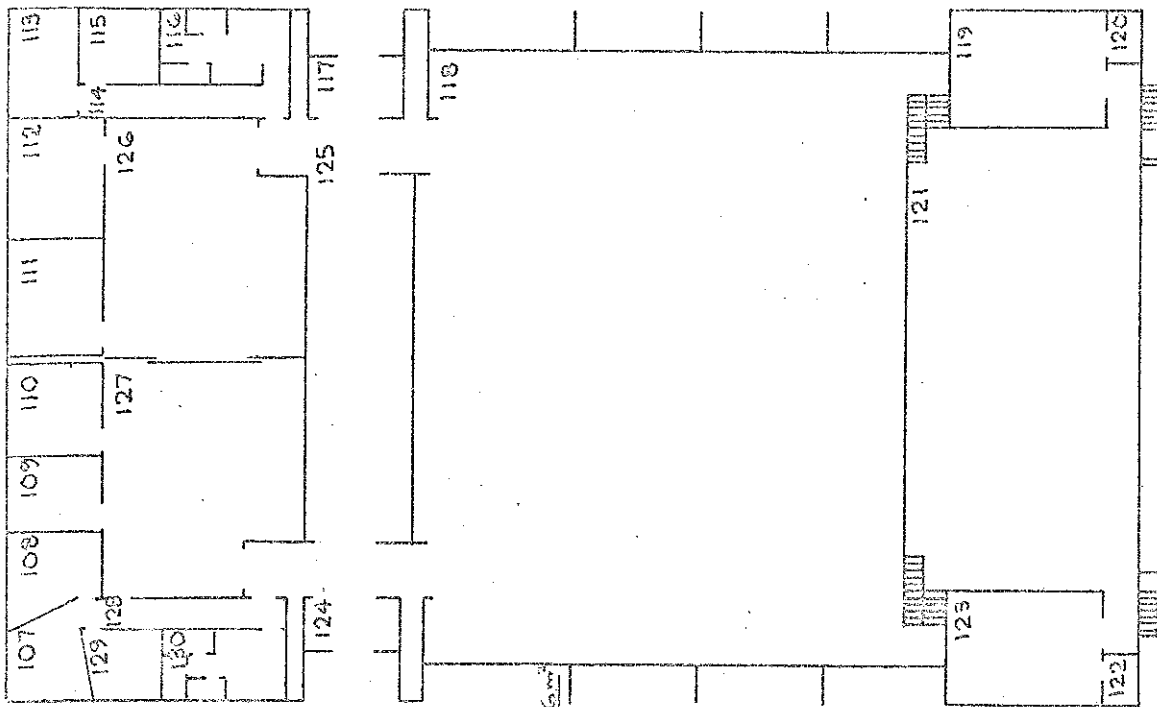
ROOM	AREA
75 WET WEATHER AREA	129.28m ²
76 STAIRS	63.84m ²
77 CLASSROOM	62.32m ²
78 CLASSROOM	62.32m ²
79 CLASSROOM	59.13m ²
80 CLASSROOM	59.13m ²
81 CLASSROOM	62.32m ²
82 CLASSROOM	13.37m ²
83 PROJECT STORE	69.42m ²
84 METALWORK	66.36m ²
85 STAIRS	159.6m ²
86 TUCKSHOP	
87 STAIRS	
88 TOILETS	
89 TOILETS	
90 TOILETS	
91 TOILETS	
92 CORRIDOR	
TOTAL AREA BLOCK H	1257.72

GROUND FLOOR

DEPARTMENT OF EDUCATION

buildings division: integration of private schools
 School: ST PATRICK'S COLLEGE, WELLINGTON

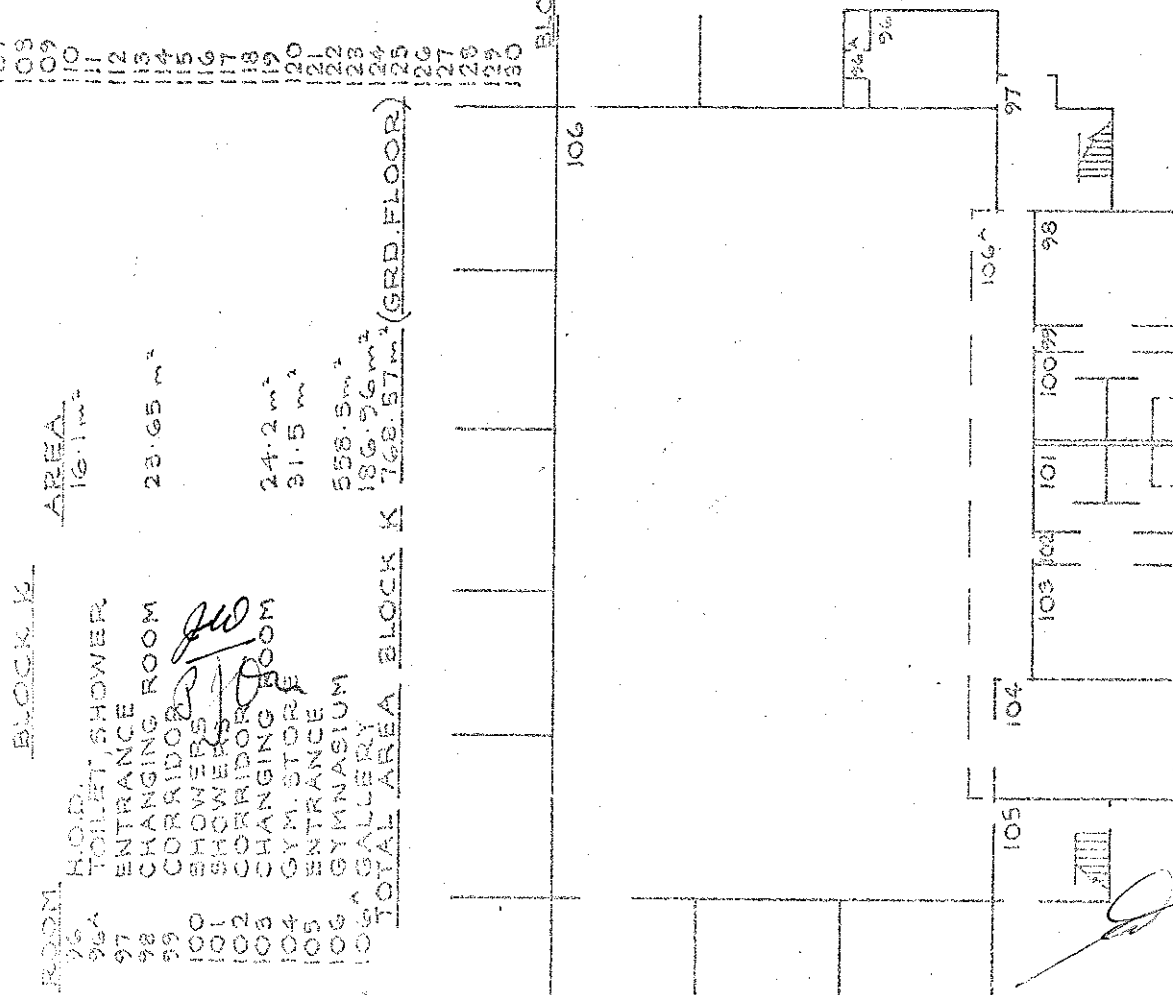
Drawing No:	E15.079 05	Scale:	1:300
Date:	31 AUGUST 1979		
Revision	22 OCTOBER 1980	Drawn:	<i>22/8</i>



ROOM	AREA
107 PRACTICE	8.29
108 MUSIC PRACTICE	10.14
109 H.O.D.	10.15
110 STORE	12.6
111 KITCHEN	15.75
112 MAINTENANCE	16.1
113 CORRIDOR	10.5
114 STORE/Drama	8.4
115 MALE TOILET	
116 ENTRANCE	
117 ASSEMBLY HALL	474.6
118 DRESSING ROOM	25.2
119 TOILET	
120 STAGE	177.96
121 TOILET	
122 DRESSING ROOM	25.2
123 ENTRANCE	
124 CORRIDOR	
125 Drama/BAND PRACTICE	62.82
126 MUSIC ROOM	62.62
127 CORRIDOR	
128 PRACTICE	6.88
129 FEMALE TOILET	
130	

BLOCK J TOTAL AREA 1142.36m²

GROUND FLOOR



ROOM	AREA
96 H.O.D.	16.1
97 TOILET, SHOWER	
98 ENTRANCE ROOM	23.65
99 CORRIDOR	
100 SHOWERS	24.2
101 SHOWERS	31.5
102 CHANGING ROOM	
103 GYM STORE	
104 ENTRANCE	
105 GYMNASIUM	558.5
106 GALLERY	186.96
TOTAL AREA	768.57m² (GRD. FLOOR)

BLOCK K TOTAL AREA 768.57m² (GRD. FLOOR)

DEPARTMENT OF EDUCATION
buildings division: integration of private schools
School: ST PATRICK'S COLLEGE, WELLINGTON

Drawing No:

E15 079 06

Date:

3 SEPTEMBER 1979

Revision

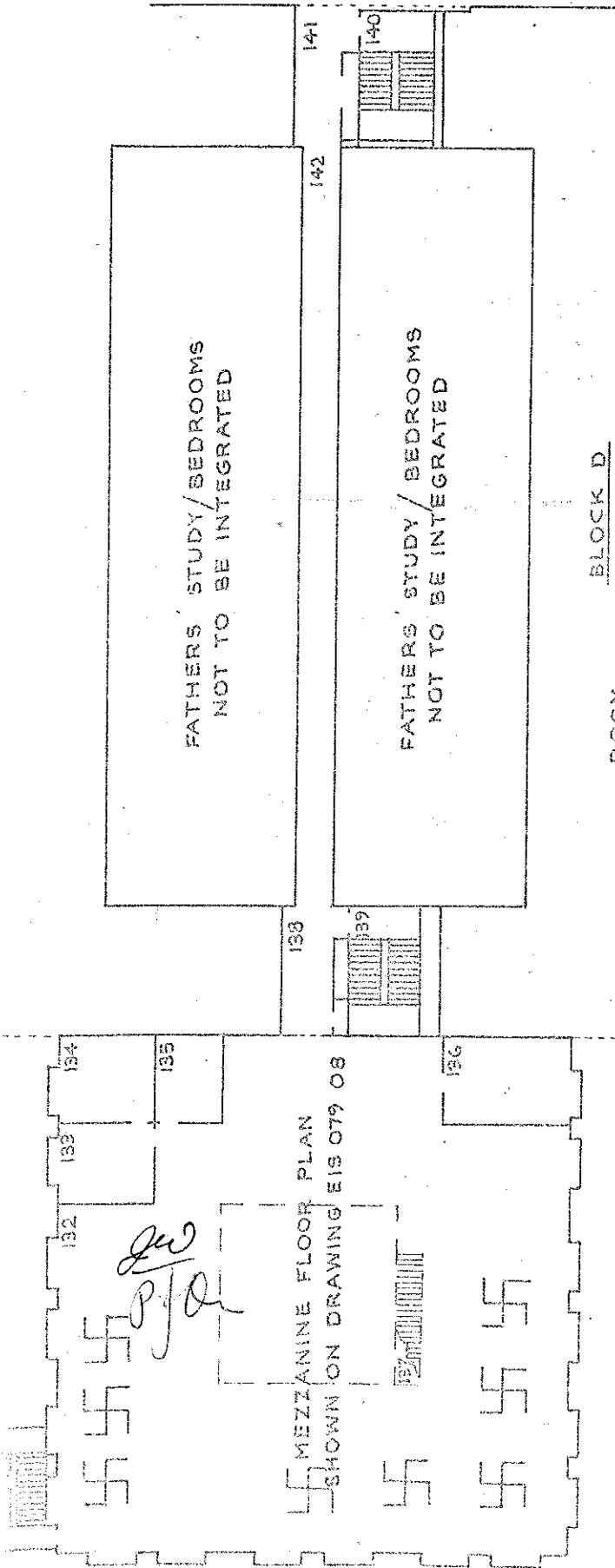
22 OCTOBER 1980

Drawn:

adp

Scale:

1:300



BLOCK D

ROOM	AREA
138	CORRIDOR
139	STAIRS
140	STAIRS
141	CORRIDOR
142	CORRIDOR

TOTAL INTEGRATING AREA = 145.28 m²

TOTAL AREA = 139.04 m²

BLOCK C

ROOM	AREA
131	STAIRS
132	LIBRARY
133	OFFICE
134	WORK ROOM
135	STOCK ROOM
136	AUDIO ROOM
137	STAIRS

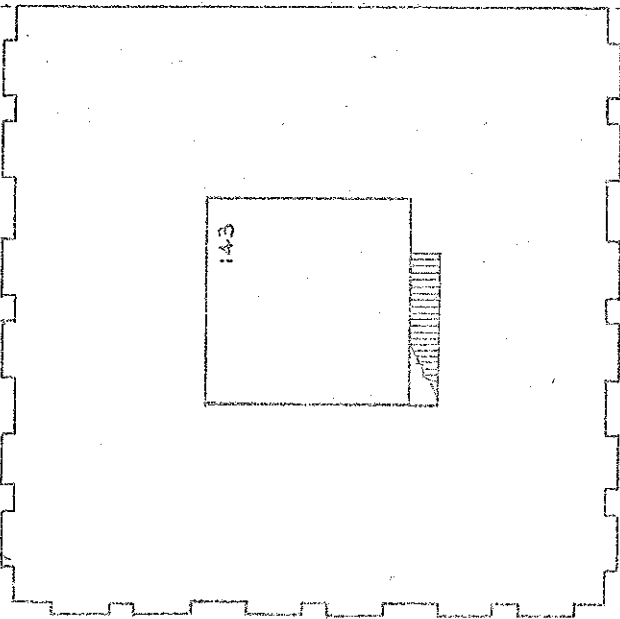
TOTAL AREA = 583.54 m²

FIRST FLOOR

DEPARTMENT OF EDUCATION
buildings division: integration of private schools
School: ST PATRICK'S COLLEGE, WELLINGTON

Drawing No:	EIS 079 07	Scale:	1:300
Date:	5 SEPTEMBER 1979	Revision	22 OCTOBER 1980
Drawn:	J. W.		

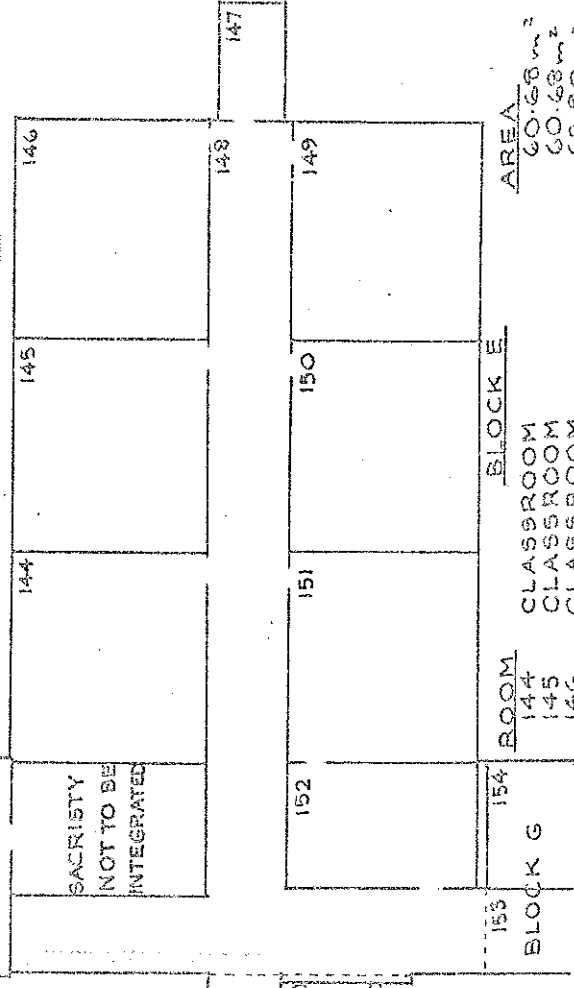
*Jan
PJO*



BLOCK C
ROOM 143 LIBRARY AREA 65.61m²

BLOCK B
CHAPEL
NOT TO BE INTEGRATED

TOTAL AREA = 632.96m²



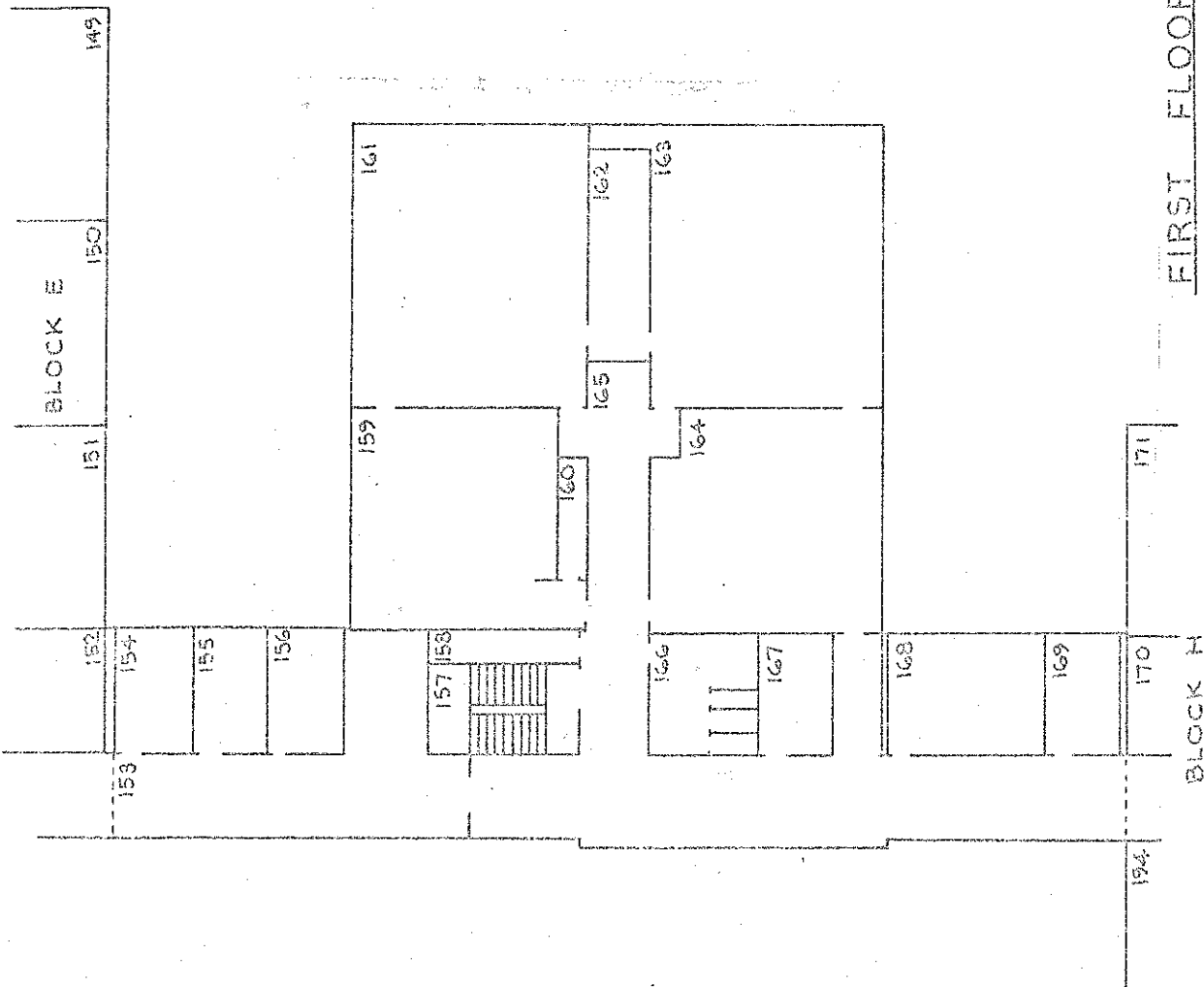
BLOCK E
ROOM 144 CLASSROOM 60.68m²
145 CLASSROOM 60.68m²
146 CLASSROOM 62.90m²
147 STAIRS
148 CORRIDOR 62.90m²
149 CLASSROOM 60.68m²
150 CLASSROOM 60.68m²
151 GEOGRAPHY 60.68m²
152 GEOGRAPHY RESOURCE 86.26m²

FIRST FLOOR

MEZZANINE FLOOR

TOTAL INTEGRATING AREA = 571.46m²

DEPARTMENT OF EDUCATION		Drawing No: Scale:	
buildings division: integration of private schools		EIS 079 08	1:300
School: ST PATRICK'S COLLEGE, WELLINGTON		Date:	
		5 SEPTEMBER 1979	
		REVISION	Drawn:
		22 OCTOBER 1980	<i>WJH</i>

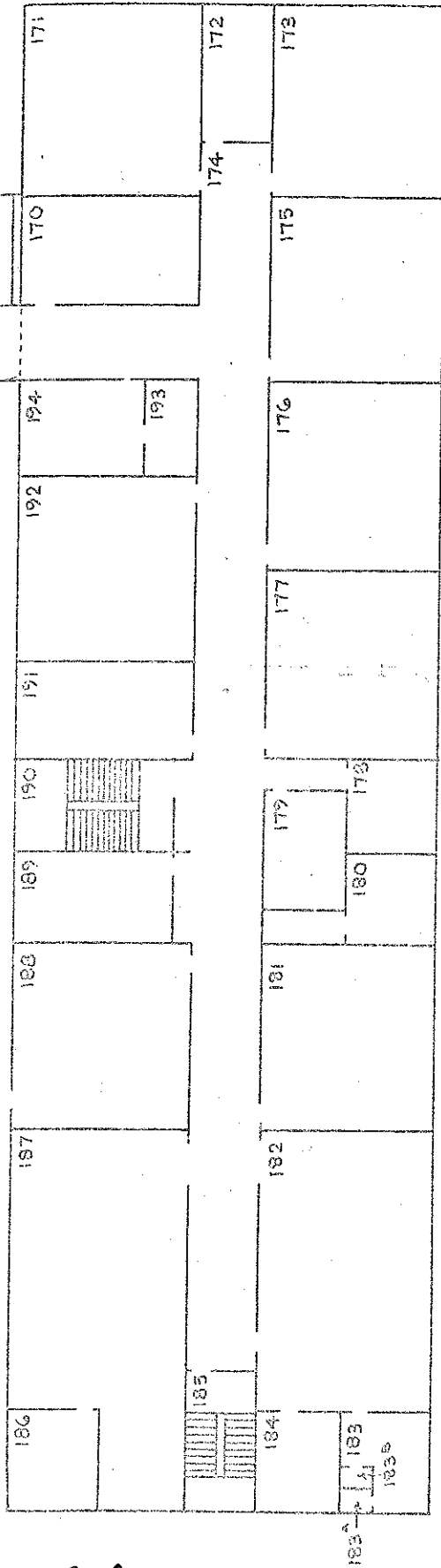


FIRST FLOOR

ROOM	AREA
153	CORRIDOR
154	H.O.D. DEAN 5 TH FORM
155	H.O.D.
156	H.O.D.
157	STAIRS
158	STORE
159	LANGUAGE CLASSROOM
160	LANGUAGE STORE
161	SENIOR CHEMISTRY
162	PREP.
163	GENERAL SCIENCE
164	MATHS CLASSROOM
165	CORRIDOR
166	TOILETS
167	H.O.D.
168	SEMINAR
169	H.O.D.
170	CORRIDOR
171	TOILETS
172	H.O.D.
173	GENERAL SCIENCE
174	MATHS CLASSROOM
175	SENIOR CHEMISTRY
176	LANGUAGE CLASSROOM
177	LANGUAGE STORE
178	STORE
179	H.O.D.
180	H.O.D.
181	H.O.D.
182	STAIRS
183	CORRIDOR
184	H.O.D.
185	H.O.D.
186	H.O.D.
187	H.O.D.
188	H.O.D.
189	H.O.D.
190	H.O.D.
191	H.O.D.
192	H.O.D.
193	H.O.D.
194	H.O.D.
195	H.O.D.
196	H.O.D.
197	H.O.D.
198	H.O.D.
199	H.O.D.
200	H.O.D.
TOTAL AREA	792.4 m ²

DEPARTMENT OF EDUCATION
buildings division: integration of private schools
School: ST PATRICK'S COLLEGE, WELLINGTON

Drawing No:	Scale:
EIS 079 09	1:300
Date:	
7 SEPTEMBER 1979	
Revision	Drawn:
22 OCTOBER 1980	208



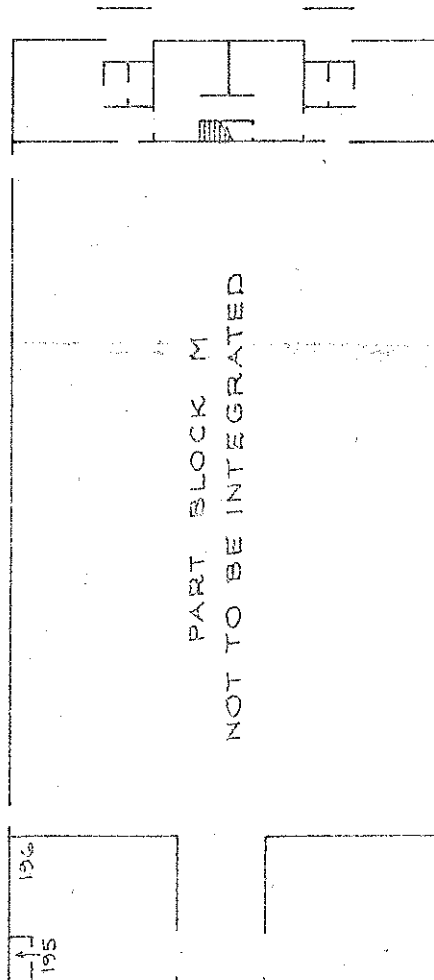
ROOM	BLOCK H	AREA
170	STAFF RESOURCE	36.96m ²
171	CLASSROOM	64.5m ²
172	STAIRS	
173	CLASSROOM	64.6m ²
174	CORRIDOR	
175	CLASSROOM	63.08m ²
176	CLASSROOM	63.08m ²
177	CLASSROOM	63.08m ²
178	CATERERS	15.96m ²
179	INTERVIEW	19.38m ²
180	XEROX	14.8m ²
181	TECHNICAL DRAWING	62.92m ²
182	TECHNICAL DRAWING	94.2m ²
183	H.O.D./DEAN	14.44m ²
184	PRINT/RESOURCE	17.1m ²
185	STAIRS	
186	TEACHER RESOURCE	17.1m ²
187	ART & CRAFT	108.45m ²
188	CLASSROOM	61.5m ²
189	SENIOR DEAN	21.06m ²
190	STAIRS	
191	STUDIES/SEMINAR/REM.	31.5m ²
192	CLASSROOM	61.5m ²
193	WATER TANKS	
194	DEAN 3RD FORM	22.36m ²
TOTAL AREA 1255.34m ²		

FIRST FLOOR

DEPARTMENT OF EDUCATION
buildings division: integration of private schools
School: ST PATRICK'S COLLEGE, WELLINGTON

Drawing No:	Scale:
EIS 079 10	1:300
Date:	
7 SEPTEMBER 1979	
Revision	Drawn:
22 OCTOBER 1980	283

Law
P/O



<u>ROOM</u>	<u>BLOCK M</u>	<u>AREA</u>
195 TOILET		
196 STORE/WORKSHOP		36.52 m ²
<u>TOTAL INTEGRATING AREA = 42 m²</u>		
<u>TOTAL AREA = 599.92 m²</u>		

[Signature]

DEPARTMENT OF EDUCATION		Drawing No:	Scale:
Buildings division: integration of private schools		EIS 079 11	1:300
School: ST PATRICK'S COLLEGE, WELLINGTON		Date:	
		15 MAY 1981	
		Revision	Drawn: <i>des</i>

FIFTH SCHEDULE

RESUME OF THE HISTORICAL AND TRADITIONAL CONNECTION BETWEEN
THE ORDER AND THE SCHOOL - ST PATRICK'S COLLEGE, WELLINGTON

St Patrick's College, Wellington, was originally established in 1885 in Cambridge Terrace, Wellington. It was founded by the Roman Catholic Archbishop of Wellington, Francis Redwood. At his request an Order of Roman Catholic men known as the Society of Mary (also known as the Marist Fathers) agreed to conduct and supply staff to the school. The founding teachers were members of the Order from Ireland where the Order conducted and still conducts a school in the City of Dundalk.

The school was originally a boarding and day school for the Catholic education of Catholic boys from throughout New Zealand. In 1931 the boarding component of the school was moved to the Hutt Valley to establish St. Patrick's College, Silverstream. From that time St. Patrick's College, Wellington, has remained a day school for Catholic boys and members of the New Zealand Province of the Society of Mary have continued to conduct the school and supply teachers.

In 1979, because of motorway development in the City, the school was resited at Evans Bay Parade, Wellington.

The Society of Mary is an international Roman Catholic religious order of men most of whom are priests but the Order also has unordained members known as Brothers as well as students in training. The Order was founded in France by Father John Claude Colin and approved by Pope Gregory XVI on 29 April, 1836. Its members devote their lives to prayer and to religious, charitable and educational ministries within the Roman Catholic Church including but not exclusively, the conducting and staffing of schools. Members of the Order live in or are attached to communities. They hold property in common and remuneration received is accepted, not personally, but on behalf of the community. By their rule the Marist Fathers promise to follow Jesus Christ by adopting the attitudes of the Mother of God whom they accept as their model in all their ministries.

gaw
P for

[Signature]

In 1838, at the request of Pope Gregory XVI the Marist Fathers established missions in the islands of the Pacific Ocean including New Zealand. For this reason the New Zealand Province of the Marist Fathers retains a traditional association with the Pacific area and continues to encourage some of its members to take up posts in that region, including the staffing and conducting of schools. More recently, in accordance with the traditions of the Order the New Zealand Province assumed the obligation of conducting St Anthony's High School in Lahore, Pakistan.

Besides St Patrick's College, Wellington, the New Zealand Province of the Order conducts other schools in New Zealand, both those of which the Roman Catholic Bishop of the Diocese is the Proprietor and also those which have other Proprietors. As at the effective date those other schools for which the Order provides staff, and with which St Patrick's College has a Special Link, are:

Pompallier College, Whangarei

St Augustine's College, Wanganui

Hato Paora College, Feilding

St Patrick's College, Silverstream

St John's College, Hastings

St Bede's College, Christchurch

St Patrick's High School, Timaru

Chanel College, Moamoa, Western Samoa

St Anthony's High School, Lahore, Pakistan

In addition the New Zealand Province of the Society of Mary is closely associated with other schools staffed by the Order in Tonga, Fiji, Australia, the United States, the United Kingdom and other parts of the world. These overseas schools frequently exchange teachers with the New Zealand schools named herein.

Because of its connections with the Society of Mary, St Patrick's College, Wellington, is distinguished by the traditional spirit of the Order. This traditional spirit has been manifested in:

JW
PJA

[Signature]

- (1) A special care to encourage in the school community the practice of the rites, sacraments and devotional practices of the Roman Catholic Church, using as Minister the ordained members of the Order who teach in the school;
- (2) members of the Order living in community on the school premises and being available to the school, its pupils, their parents and others. Thus a family atmosphere is deliberately fostered in the school community;
- (3) an active concern for the Roman Catholic Church in Wellington which the school serves;
- (4) a special devotion of the School to Mary, the Mother of God whose name the Order bears;
- (5) a special compassion for those oppressed by ignorance, poverty or injustice;
- (6) the presence in the school of some students sent to New Zealand by the Roman Catholic bishops of Oceania for further education.

for.
P. J. O.

W